

# Storm

Permit: SMP 24-2

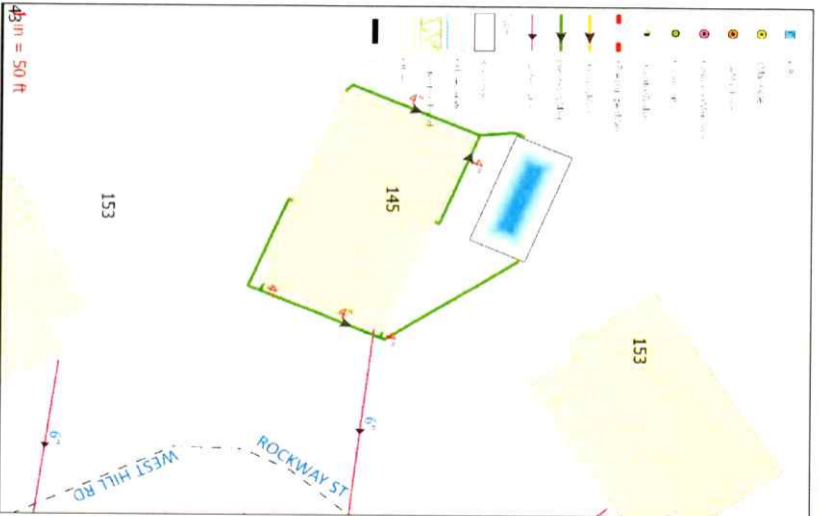
Address: <sup>197 ROCKWAY ST</sup>  
~~145-147 West Hill Rd~~

Enters: Sel-contained

Sewer Plot: 102 A

Plot/Lot: 85/104

From Property of: Bayberry



Copyright © 2004 John Wiley & Sons, Inc.

Figure 1.  $\text{Fe(II)}$  ( $\bullet$ ),  $\text{Fe(III)}$  ( $\circ$ ), and  $\text{Fe(IV)}$  ( $\Delta$ ) concentrations in the  $\text{Mn(II)}$  column at 100 °C.  $\text{Fe(II)}$  and  $\text{Fe(III)}$  were determined by ICP-MS, and  $\text{Fe(IV)}$  was determined by the method of *et al.* [19].

[illegible]

Dariusz Nowakowski 1987