

DRAIN

Permit
No. 9702-16

✓
Ryan St.
Brigham to Brannell.
enters Ryan St. sewer.
6" pipe.

May 3, 1916.

From Property of Stephen D. Sylvia.

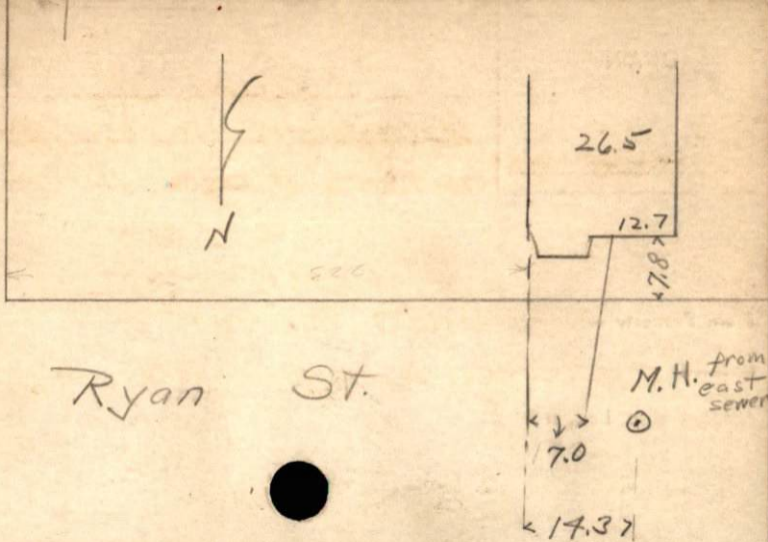
Located s.s. Ryan St.

Account Misc. Ledger

BY F O DEMELLO

see plan 2503

Brigham St.



Ryan St.

261
092
172