

DRAIN

Permit

No. 9342-15

Harthorn St.

Tremont to Patch Ave.

enters Harthorn St. sewer.

6" pipe.

June 15, 1915.

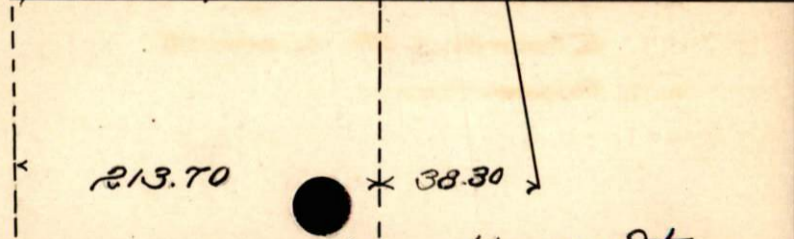
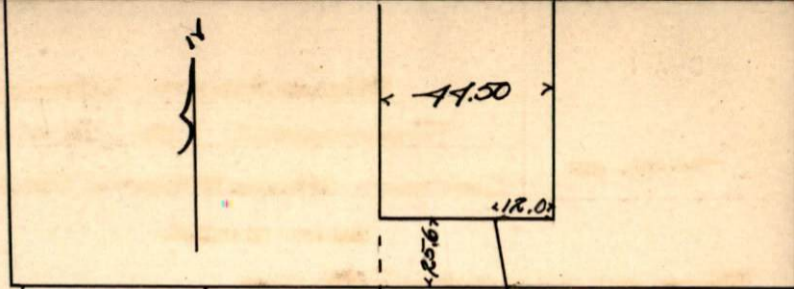
From Property of Wm. A. Carroll.

Located n.s. Harthorn St.

Account Misc. Ledger

BY F. O. DEMELLO

Rotch Ave.



213.70

38.30



Hawthorne St.