

DRAIN

Permit

No. 9279-15

Tinkham St.

Bowditch to Brook

enters Tinkham St. sewer.

6" pipe.

May 25, 1915.

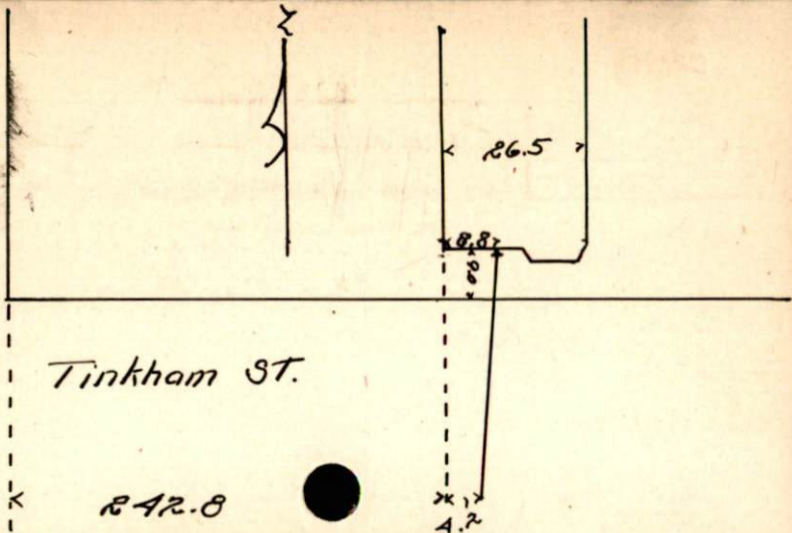
From Property of Simon Beserovsky

Located n.s. Tinkham St.

Account Misc. Ledger

BY F O DEMELLO

Ch Brook St.



Tinkham St.

242.8

26.5

8.87

8.00

4.2