

DRAIN

Permit
No. 9161-15

Clara St. ✓
Cleveland to Brock Cir.
enters Clara St. sewer
6" pipe

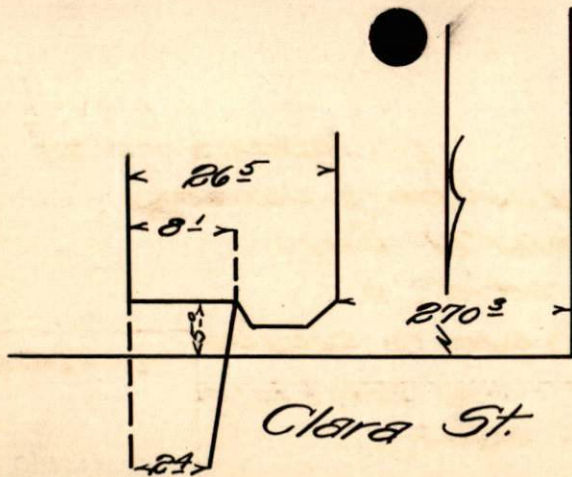
Jan. 4, 1915

From Property of Emma Breault

Located s.s. Clara St.

Account Misc. Ledger

BY F O DEMELLO



Brock Ave.

Clara St.