

DRAIN

Permit  
No. 9117-14

Earle St.  
Brook to Church  
enters Earle St. sewer  
6" pipe

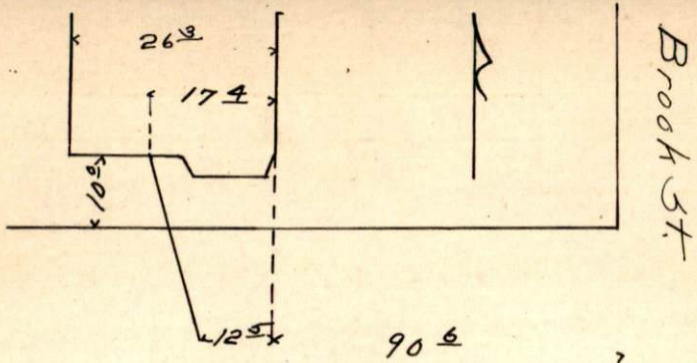
Nov. 25, 1914

From Property of Simon Mechaber

Located n.s. Earle St.

Account Misc. Ledger

BY F O DEMELLO



Brook St.

90 1/2  
Earle St.