

DRAIN

Permit

No. 9060-14

Dartmouth St.
S.W. cor. Stowell

enters " St. Sewer.

6" pipe

Oct. 19, 1914

From Property of

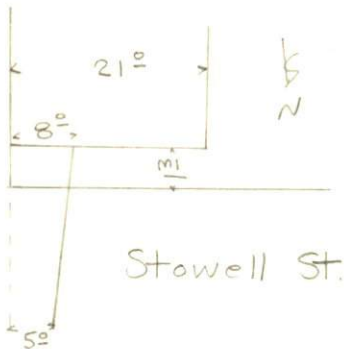
Joseph L. Sylvia

Located

Amount Misc. Ledger

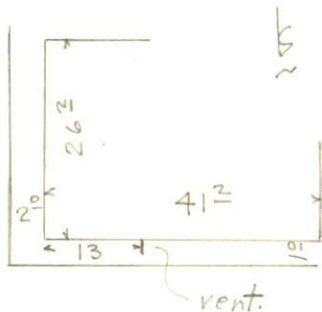


Dartmouth St.



Sketch as drawn
at time

Dartmouth St.



Sketch as bldg. and
drain actually are
 $\frac{1}{27}/43$