

DRAIN

Permit

No. 8616-13

Sagamore St
Bolton to Hemlock
enters Sagamore St sewer
6 in. pipe

Jan. 6, 1913

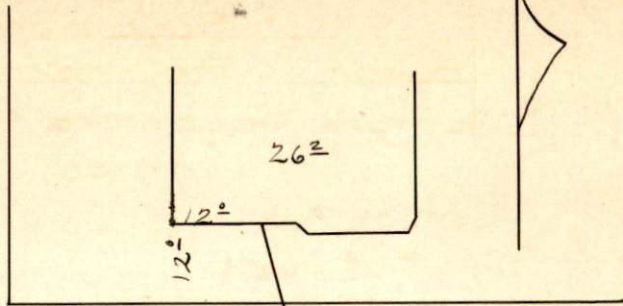
BY F C DEMELLO

From Property of Antone Mattos

Located n.e. Sagamore St

Account Misc. Ledger

Hamlook St



< 89' > 106' >

Sagamore



St

