

DRAIN

Permit

No. 8339-13

Clara St  
E. French Ave to Brock Ave  
enters Clara St sewer  
6 in. pipe

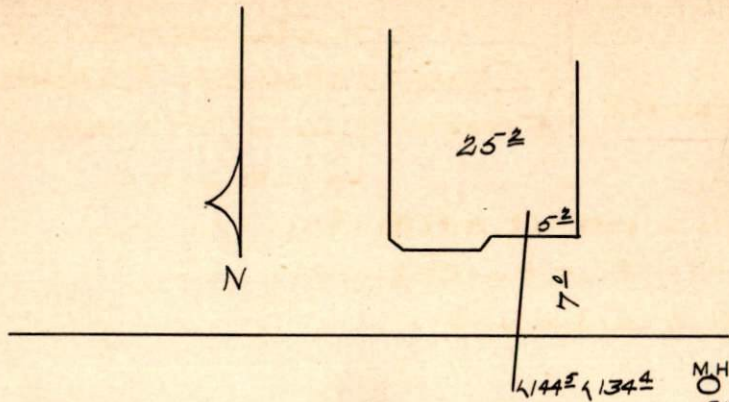
July 2, 1913

From Property of Henry Breault

Located S.E. Clara St

Account Misc. Ledger

BY F C DEMELLO



Clara

St

M.H.  
O  
2nd  
e. of Brock  
Ave