

DRAIN

Permit

No. 7090-11

County Street

Court to Morgan

Court St.

Enters Morgan St. sewer

5 in. pipe

Aug. 2, 1911 at 9 A.M. by F. C. DE MELLO

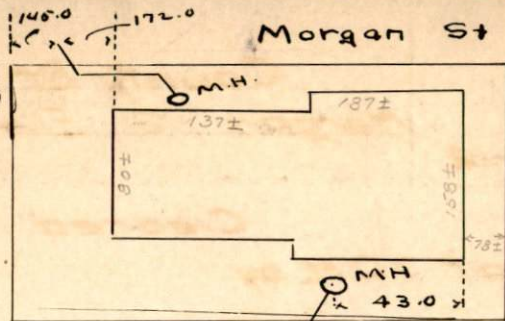
From Property of City of New Bedford

Located County St.

Account Misc. Ledger

1

Cottage  
St.



Morgan St

County  
St.

Orchard  
St.

M.H.

M.H.

43.0

146.6 Court St.