

DRAIN

Permit

No. 6548-10

Earle Street

Belleville Ave. to Front

Enters Earle St. Sewer

6" pipe.

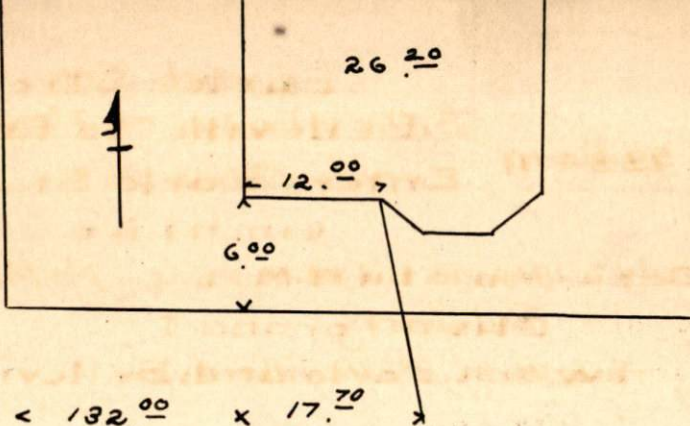
Jan. 12, 1911 at 1 P.M. by F.C. DeMello

From Property of Emile Belanger,

Located n.s. east of No. Front St.

Account Misc. Ledger

Front St.



Earle St.