

DRAIN

Sawyer St.

Ash. Ave. to Bowditch

Permit

No. 650-1891.

Enters Sawyer St. Sewer.

324 ft. w. of Ash. Ave. T. Nov. 10, 1891. at 4
P.M. by John F. Gifford.

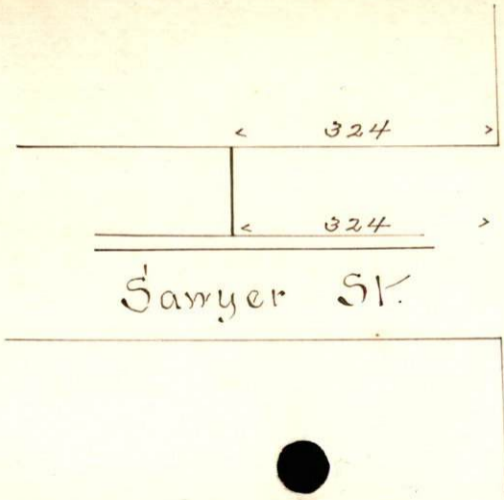
From property of

Frederick Heran.

Located

Sawyer. w. s. 324 ft. w. of Ash Ave.

Account



Samyer St.

Agushnet Ave.

N