

DRAIN

Permit

No. 6461-10

Maxfield Street

Beech to summit

Enters Maxfield St. Sewer.

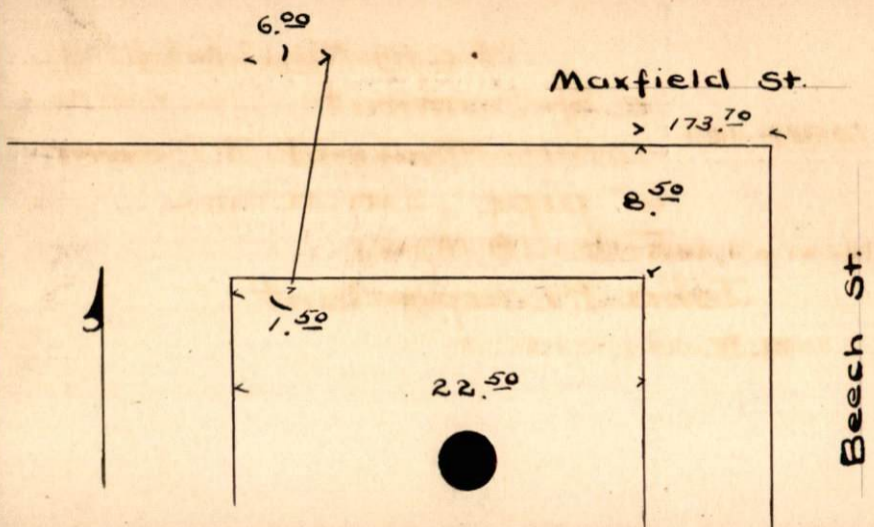
6" pipe.

Dec. 9, 1910 at 10 A.M. by F.C. DeMello

From Property of Mrs. E.F.M. Freeman.

Located 624 West Maxfield St.

Account Misc. Ledger



Maxfield St.

Beech St.