

✓  
DRAIN

Sawyer St  
Bellville ave.  
Mitchell to ~~Roche~~

Permit

No. 576-1891.

Outlets Sawyer St sewer 17

ft. w. of Mitchell (Branch # 78.) 6" 75. July 31,  
1891, at 7 A.M. by Joe Armstrong.

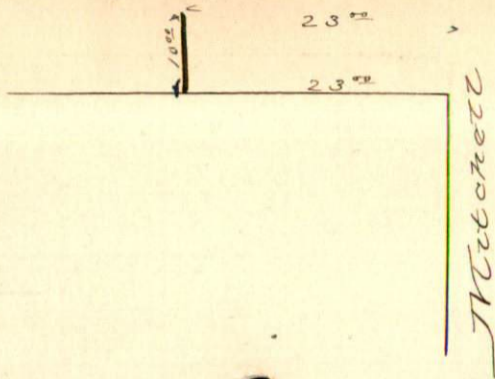
From property of

J. A. Pantony.

Located Sawyer s.s. 24 ft. w. of Mitchell.

Account

Garnier St



A