

DRAIN ✓

Hillman St.

Summit to Rockdale Ave.

Permit
No. 4975-1898.

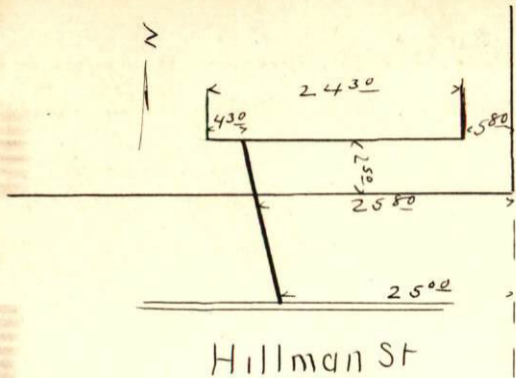
Enters Hillman St. Sewer.

25th w of Summit Dec 13, 1898. 1 P.M. by F. C.
De Mello. 5" Pipe.

From property of Miss Martha E. Martin.

Located N.W. cor Hillman & Summit.

Account Misc. Ledger p. 57.



Summit St.

Hillman St