

DRAIN ✓

Permit  
No. 4824-09

COLLETTE ST.

Bowditch to Brook.

Enters Collette St. Sewer.

6" Pipe

June 12, 1909 at 11 A.M. by F.C. DeMello

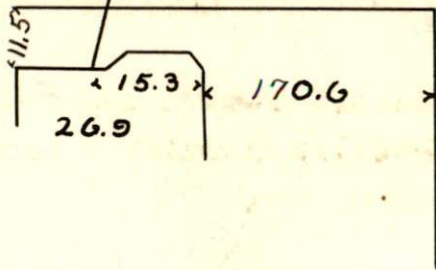
From Property of Alfred Pearson

Located S.S.

Account Misc. Ledger

Collette St.

181.6



Bowditch St