

DRAIN

Sycamore St.

Walden to Thomas.

Permit

No. 465-1891.

Outlet Sycamore St. Sewer. 7.5

ft. w. of Walden with 5" p. May. 15, 1891. at  
4 P.M. by A. H. Allen.

From property of

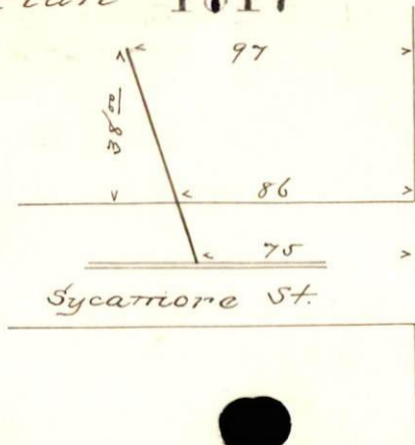
George P. Gifford (Hgt.)

Located

Sycamore n.e. 86 ft. <sup>w.</sup> of Walden.

Account

Plan 1817



Walden St.