

DRAIN

Permit
No. 3289-07

✓
Earle St.
Bowditch to Brook.
Earle St. Sewer

6" pipe

Aug. 27, 1907 at 10 a.m. by F.C. DeMello.

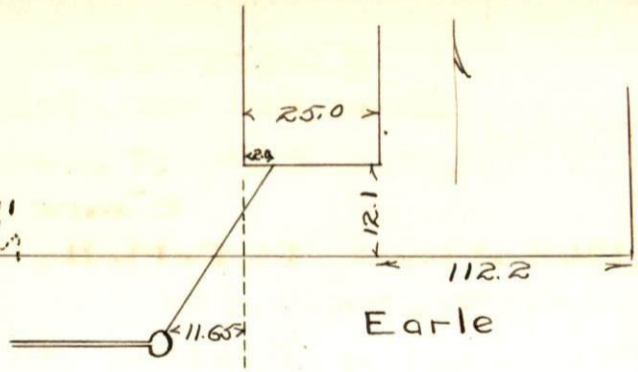
From Property of

Philibert Poulin

Located N.S.

Account Misc. Ledger

1211 11
124



Bowditch.

Earle