



DRAIN

Page St.

Permit No. 2907-1895

From Grape to Allen

Centers Page to Sewer 211<sup>00</sup> S of

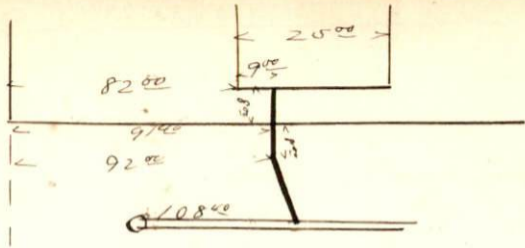
Allen, (branch 24) 5" p. Oct. 17 1895 at 1 P.M. by  
F. B. De Mello

From property of Emil A. Johnson

Located Page 205<sup>00</sup> S of Allen

Account Misc. Ledger p. 317

Millem St



Page St

