

DRAIN

Permit

No. 15540-49

NORTH ST.

n.s.

Watson to Kempton St.

enters Kempton St sewer

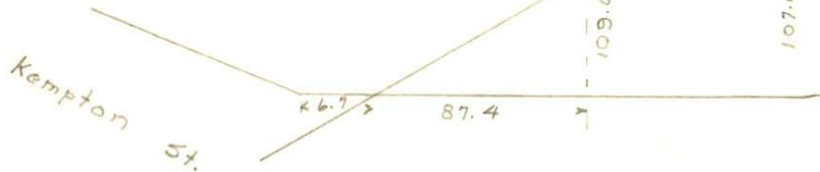
From Property of

Royal Motors Inc.

Located

Amount Misc. Ledger





North 3+

$$\text{Grano } 6.5 \times 2.7 = 1.95$$

$$\text{End. } 3.7 \times 2.7 = 1.11$$