

DRAIN

Permit

No. 15028-42

Belleville Ave.

7<sup>E</sup> ~~W~~ cor. Hadley

enters Belleville Ave. Sewer.

6" pipe

Dec. 12, 1942

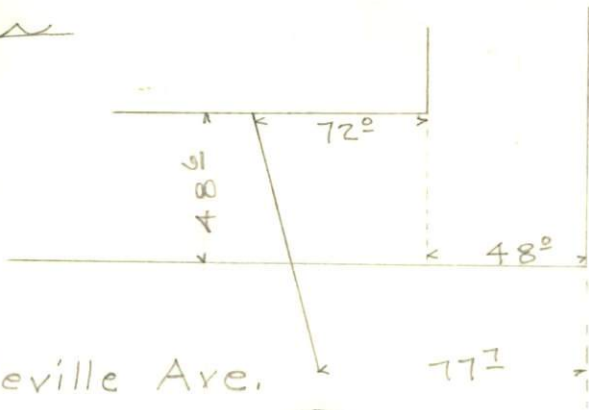
From Property of

Aerovex Corp.

Located

Amount Misc. Ledger

N



Belleville Ave.

Hadley St.