

✓
DRAIN

Herrinback St

Permit

No. 1324-1892

Main to Rockland

Enter Hemlock St Sewer

183²⁰ s. of Rockland (Structure 16) 5" p

November 15, 1892 at 2 P.M. by John Holland

From property of

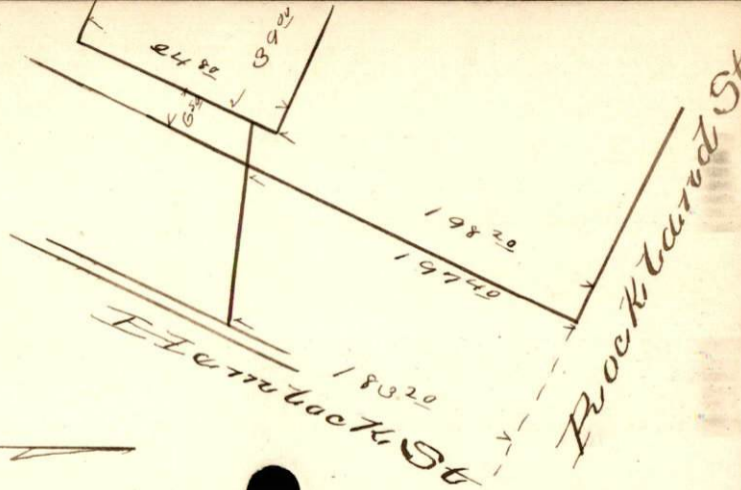
Geo. C. Briggs

Located

Hemlock w.s. 197⁴⁰ s of Rockland

Account

Misc. Ledger 262



2480

3500

650

19820

19740

18320

Fermata St

Rockland St

