

✓
DRAIN

Hazard St.
Pleasant to State.

Permit

No. 1009-1892

Enter Hazard St. Sewer.
262.3 ft. e. of State 6" p. May. 24, 1892, at
4 P.M. by John Holland.

From property of

Wamsutta Mills Corp.

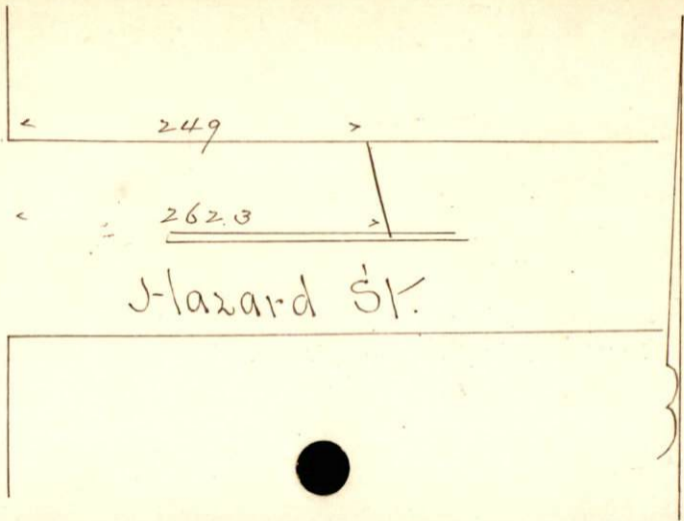
Located

Hazard. v. s. 249. ft. e. of State.

Account

M^{rs} 32

State St.



Hazard St.