

APPLICATION No.: 4001 #29858 - C

TAP CLEARED ✓

LOCATION: W.S. Pleasant St., N x Market St.

OWNER: City of New Bedford

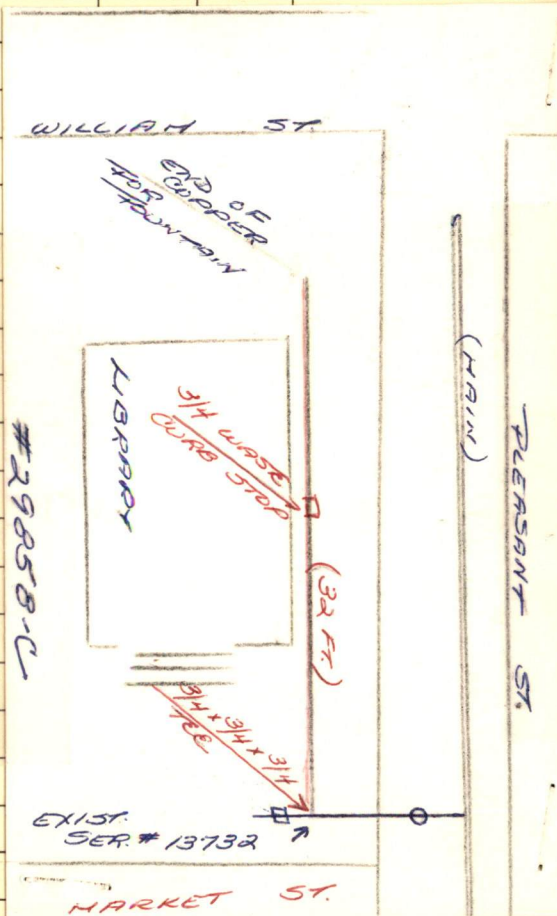
MEASURES: (Service to supply statue waterfall at Public Library)

3/4" Copper May 1, 1980

This service is a connection of #13732  
Copper 3/4" x 3/4" x 3/4" Tee is located  
15.7 ft. W x curb stop for #13732.

Measures of 3/4" Curb Stop w/waste:

W from W line Pleasant St. 3.9 ft.  
N from S line Library 21.7 ft.





APPLICATION No.: 29858-C

TAP CLEARED

COPY

LOCATION: <sup>601</sup> W.S. Pleasant St., N x Market St.

OWNER: City of New Bedford - Public Library

MEASURES: 3/4" Copper May 1, 1980

Measures of 3/4" Curb Stop w/waste:

W x W line Pleasant St.

3.9 ft.

N x S line Library

21.7 ft.

This service is a connection off # 13732 with a 3/4" x 3/4" x 3/4" copper tee:

Tee is located 15.7 ft. W x curb stop of Ser. # 13732

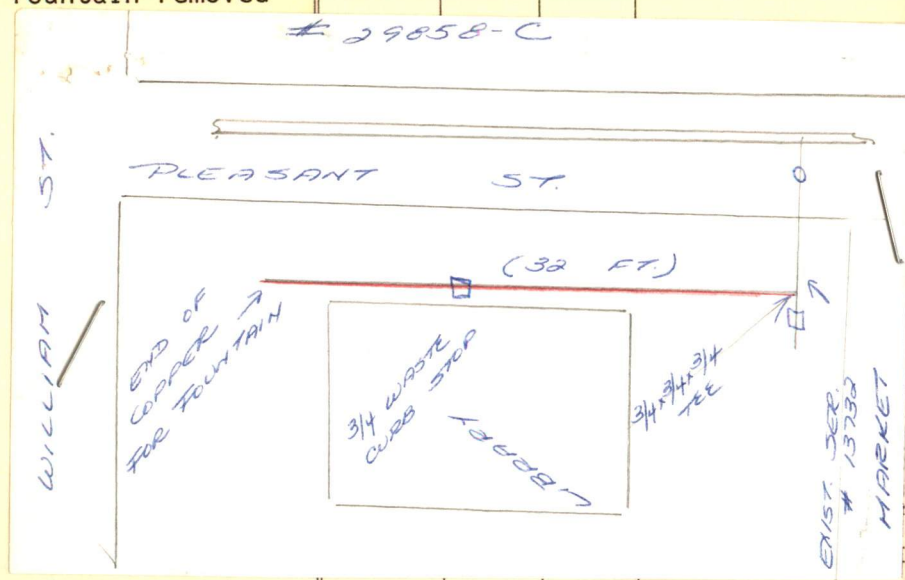
June 25, 1987 - shut off at curb stop - fountain removed

DATE

BEF.

AFT.

REMARKS





[illegible]

## CHARGE OUTS

[illegible]