

#25

APPLICATION No.: 26755

TAP CLEARED ✓

LOCATION: N.S. Homer's Wharf, E x Front St.

OWNER: Parisi Sea Foods

MEASURES: 2" Copper June 1978

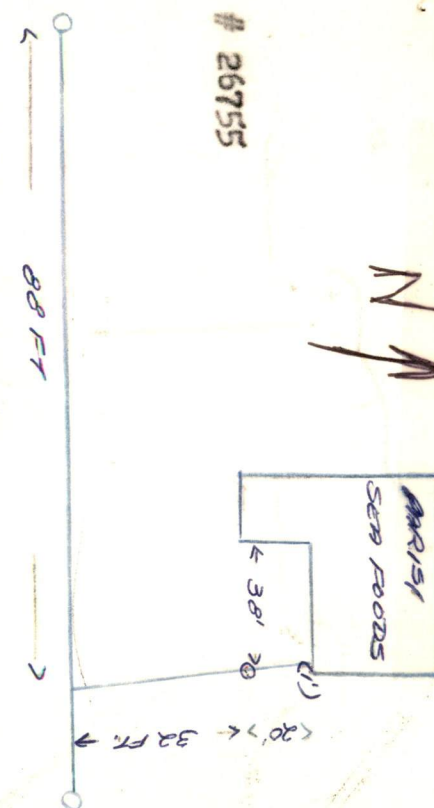
S from S line Bldg.	20.0 ft.
E from E line of jog in bldg.	38 ft.
W from E line Bldg.	1 ft.
N x main	32 ft.

June 1978 Federico renewed service from the new 8" main laid on Homers Wharf to the bldg.

8" x 2" Service Saddle 2" Corporation
 2" Curb Stop 1 Stop Box, compl.
 53 ft. - 2" Copper tubing (32' main to curb stop
 20' curb stop - bldg.
 Stock by contractor 1' ins. bldg.)

1/4/96 - NOTE: During the extension of bldg - a foundation wall was built on top of 2" curb stop. Curb stop left on during construction - line was capped inside bldg. - until it can be killed at tap.

(Replaced by N.S. 31966)



[illegible]

CHARGE OUTS

[illegible]

APPLICATION No.: 31966

TAP CLEARED ✓

LOCATION: 25 Homer's Wharf

OWNER: North Coast Seafoods

MEASURES: 2" Copper tubing Jan. 4, 1996

E x E line MacArthur Dr.	496.0 ft.
E x 8" gate Valve	41.3 ft.
S x S lien Bldg.	4.0 ft.
W x E line bldg.	51.0 ft.
E x W line bldg.	23.6 ft.
Main to curb stop	18.0 ft.

DATE

BEF.

AFT.

REMARKS

[illegible]

CHARGE OUTS

[illegible]