

APPLICATION No.: 23231

LOCATION: S.W. COR. 57 WEST X ELIZABETH

OWNER:

31-313

Measures:	3/4"	Copper	08.07.1950
	S from S	Elizabeth	41.2'
	E from W	West	9.2'
	N from S	house	7.3'

1" Copper Service

08/08/2022 2022 Water main improvement program

Contractor: C. Naughton Corp.

Type CU Diameter 1"

Distance from main to curb 25'

Distance from curb stop to meter 22'

Distance curb face to curb stop 2.5'

Depth of Service 4.5'

Total length of new pipe installed 31'

Curb Stop replaced yes size 1"

Corporation replaced yes 1"

Ball Valve replaced yes 1"

Remarks: Connect to 3/4" Copper @ PL Type B

TAP CLEARED

DATE _____

BEF.

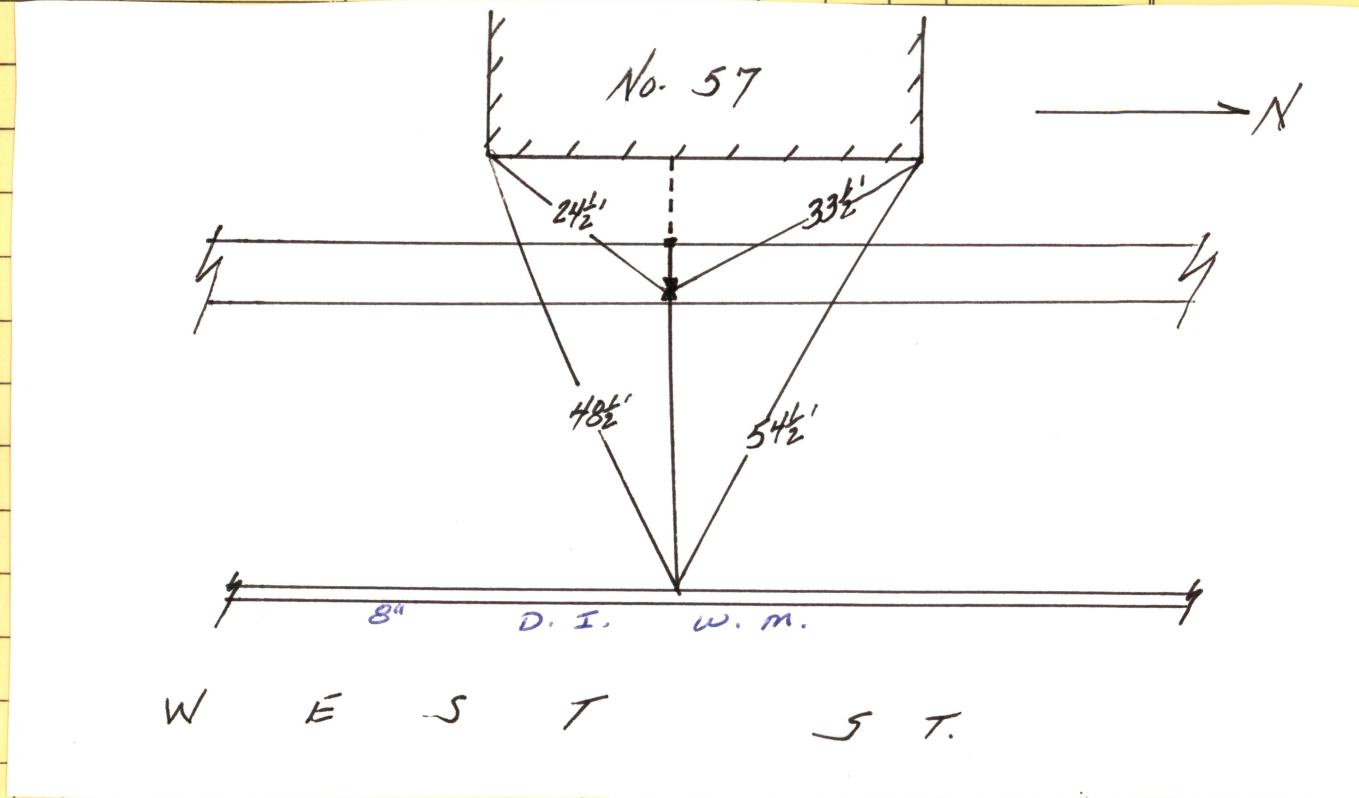
AFT.

REMARKS

METER HISTORY

CHARGE OUTS

DATE	SET OUT	SIZE	MAKE	NUMBER	READING	TEST			REMARKS



Record of Water Service Connection

PROJECT: 2022 Water Main Improvements Program New Bedford, MA

STREET: 57 WEST ST

HOUSE No:

Contractor: C. Naughton Corp.

Date: 8-8-22

Type: CU

Diameter (in):

1

Distance from main to curb stop (ft):

25'

Distance curb stop to meter (ft):

22'

Distance from curb face to curb stop (ft):

2.5'

Depth of Service (ft):

4.5'

Total length of new pipe installed (ft):

31'

Curb Stop Replaced: Yes

Size (in):

1

Corporation Replaced: Yes

Size (in):

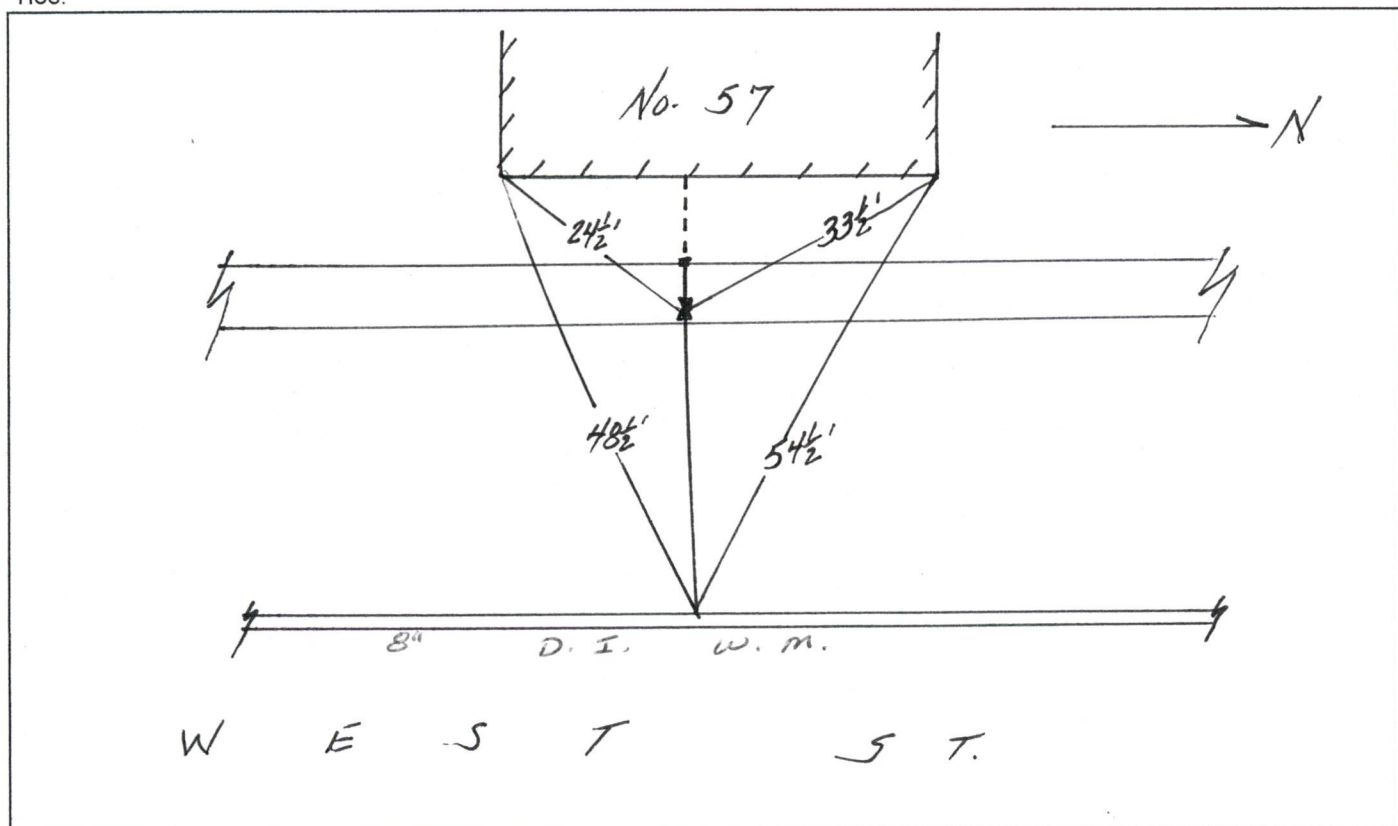
1

Ball Valve Replaced:

Size (in):

1

Ties:



Remarks:

CONNECT TO $\frac{3}{4}"$ COPPER @ P. TYPE B