

APPLICATION No.: 21901

## TAP CLEARED

LOCATION: 540 Orchard St.

OWNER: Monte Pio Luzo Americano

MEASURES: 1"	H lead	June 3, 1941
S from S line	Swift St.	111.2 ft.
W from E line	Orchard St.	-----, 9-ft. 10.2 ft.
S from N line	Bldg..	1.4 ft.

Sept. 11, 1995 During Cement lining Cont. #1 Biszko Cont. relocated  
service which was tapped off hydrant branch.

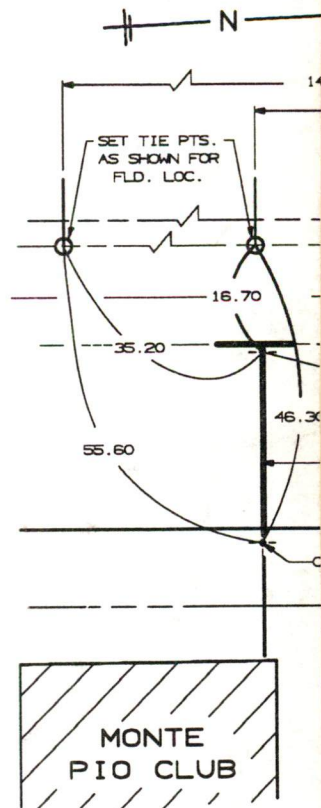
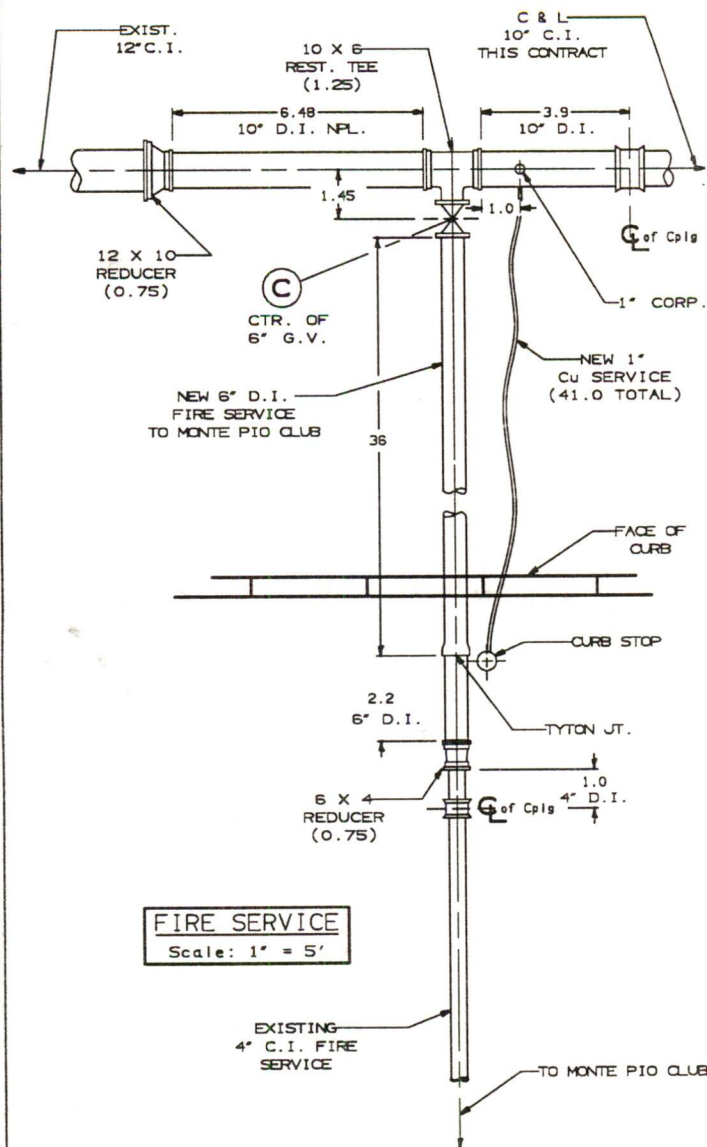
Renewed from 10" main to inside cellar.

53 ft. - 1" Copper tubing 1" Corporation tap

1" Curb Stop 1 Caldwell Stop Box, compl.

-----

# **ORCHARD ST. at SWIFT ST.** (New Orchard St. 10" G.V. & Fire Service)



## **GENERAL NOTES (UNLESS OTHERWISE NOTED)**

1. TIE MEASUREMENTS ARE TO CTR. OF G. OR CENTERLINE OF FITTINGS OR COUPL.
2. LINEAL MEASUREMENTS ARE TO FACE OF AND TO CENTERLINE OF COUPLINGS.

## **MAT'L DESCRIPTIONS:**

1. FITTINGS ARE COMPACT D.I. - CL350 AND COMPLY WITH STD AWWA C-153(ANSI).
2. FLEXIBLE COUPLINGS ARE STYLE #441.
3. ALL PIPE IS CL-52 (CLASS 52), D.I. WITH TYTON JOINTS.
4. GATE VALVES ARE AS MANUFACTURED BY AMERICAN FLOW CONTROL, AND HAVE H.

## **REFERENCE PHOTOS**

9/11/95 1994-1-01

## **FIELD MEASUREMENTS**

SEPTEMBER 11, 1995

PIPE MEAS. - D.TABER & F.BENTO

NOVEMBER 24, 1997

BUILDING & TIE LOCATIONS - D.TABER & F.BENTO

SEPTEMBER 1, 1995

\*DETAIL "D" - PIPE MEAS. - F.BENTO

**SHELBURNE SURV**

**DONALD E. TABER**

Dwn by Cheryl A.