

APPLICATION No.: 19833

LOCATION:

74-76 CLIFFORD ST.

OWNER:

G. Audette

31-313

## TAP CLEARED

DATE

BEF.

AFT.

REMARKS

Measures: 5/8"  
W from Concord 19.7'  
N from S line Clifford 8.8'  
E from W line House 6.2'

1" Copper Service

09/01/2022 2022 Water main improvement program

Contractor: C. Naughton Corp.

Type CU Diameter 1"

Distance from main to curb 9.5'

Distance from curb stop to meter 22'

Distance curb face to curb stop 1.5'

Depth of Service 4.5'

Total length of new pipe installed 31.5'

Curb Stop replaced yes size 1"

Corporation replaced yes 1"

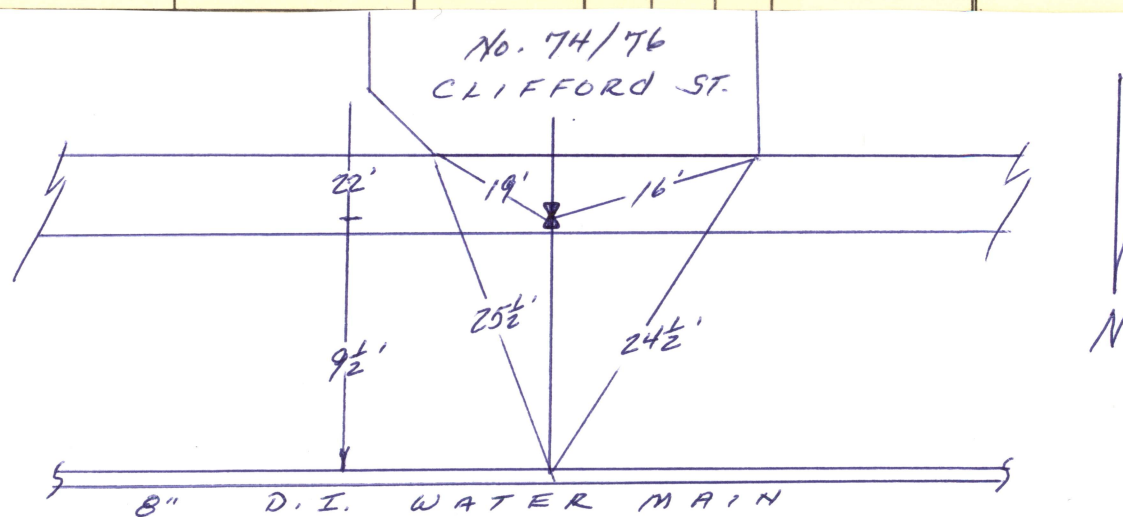
Ball Valve replaced yes N/A

Remarks: Type C - 1" Copper to meter 14' Lead removed.

# METER HISTORY

## CHARGE OUTS

| DATE | SET<br>OUT | SIZE | MAKE | NUMBER | READING | TEST |  |  | REMARKS |
|------|------------|------|------|--------|---------|------|--|--|---------|
|      |            |      |      |        |         |      |  |  |         |
|      |            |      |      |        |         |      |  |  |         |



CLIFFORD ST.

## Record of Water Service Connection

PROJECT: 2022 Water Main Improvements Program New Bedford, MA

STREET: Clifford ST.

HOUSE No: 74 / 76

Contractor: C. Naughton Corp.

Date: 9-1-22

Type: CU Diameter (in): 1

Distance from main to curb stop (ft): 9.5'

Distance curb stop to meter (ft): 22'

Distance from curb face to curb stop (ft): 1.5'

Depth of Service (ft): 4.5'

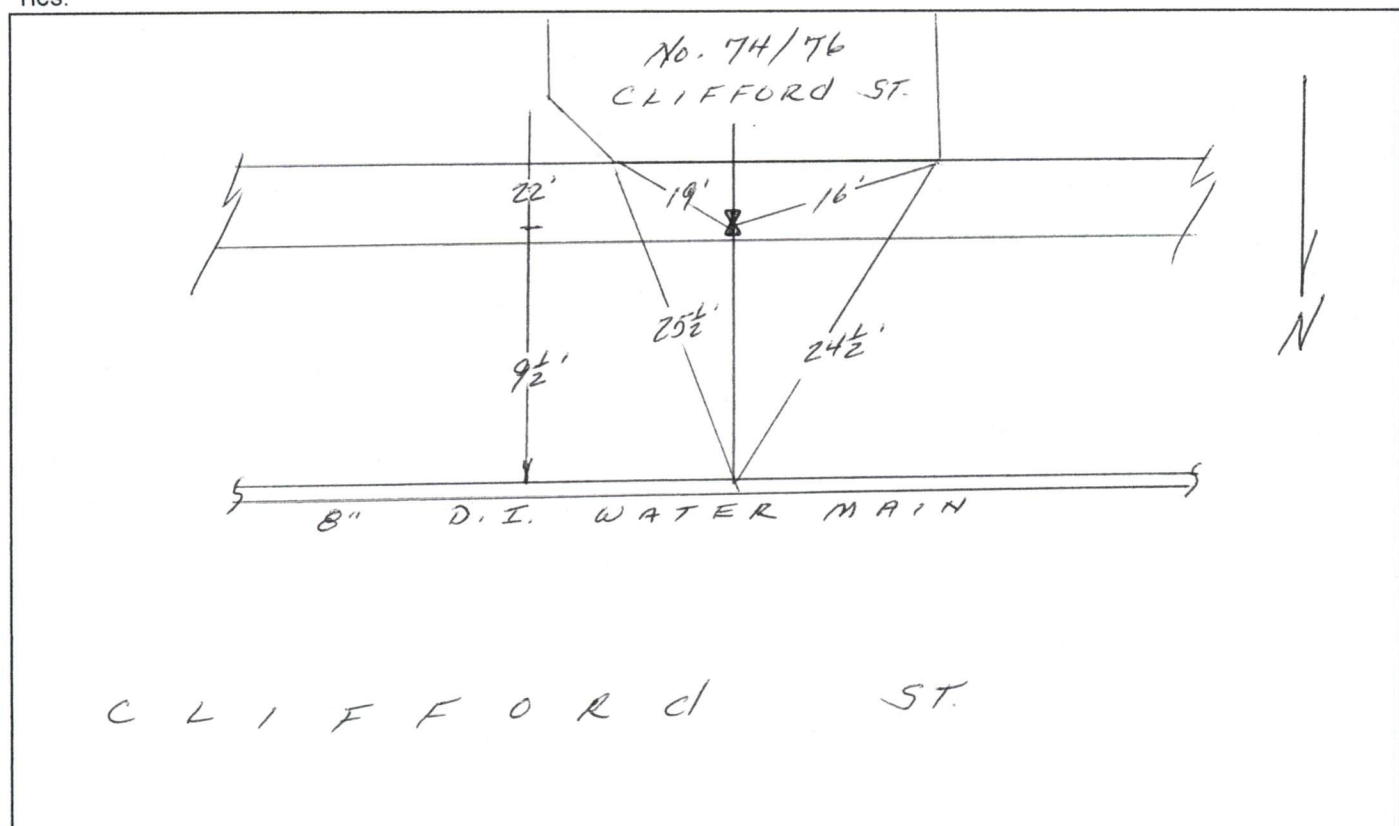
Total length of new pipe installed (ft): 31 1/2'

Curb Stop Replaced: Yes Size (in): 1

Corporation Replaced: Yes Size (in): 1

Ball Valve Replaced: Size (in):

Ties:



Remarks:

TYPE C - 1" COPPER TO METER  
14' LEAD REMOVED