

APPLICATION No.: 19730

LOCATION: 80-82 CLIFFORD ST.

OWNER: O. Rousseau

'31-313

| | | | |
|-----------|---------------|----------|------------|
| Measures: | 5/8" | L Lead | 09.18.1923 |
| | W from | Concord | 64.7' |
| | N from S line | Clifford | 8.7' |
| | E from W line | House | 2' |

1" Copper Service

09/01/2022 2022 Water main improvement program

Contractor: C. Naughton Corp.

Type CU Diameter 1"

Distance from main to curb 10.5'

Distance from curb stop to meter 26.5'

Distance curb face to curb stop 1.5'

Depth of Service 4.5'

Total length of new pipe installed 37'

Curb Stop replaced yes size 1"

Corporation replaced yes 1"

Ball Valve replaced yes N/A

Remarks: Type C – Connect 1" Copper to meter 15' of Lead pipe removed.

TAP CLEARED

DATE _____

BEF.

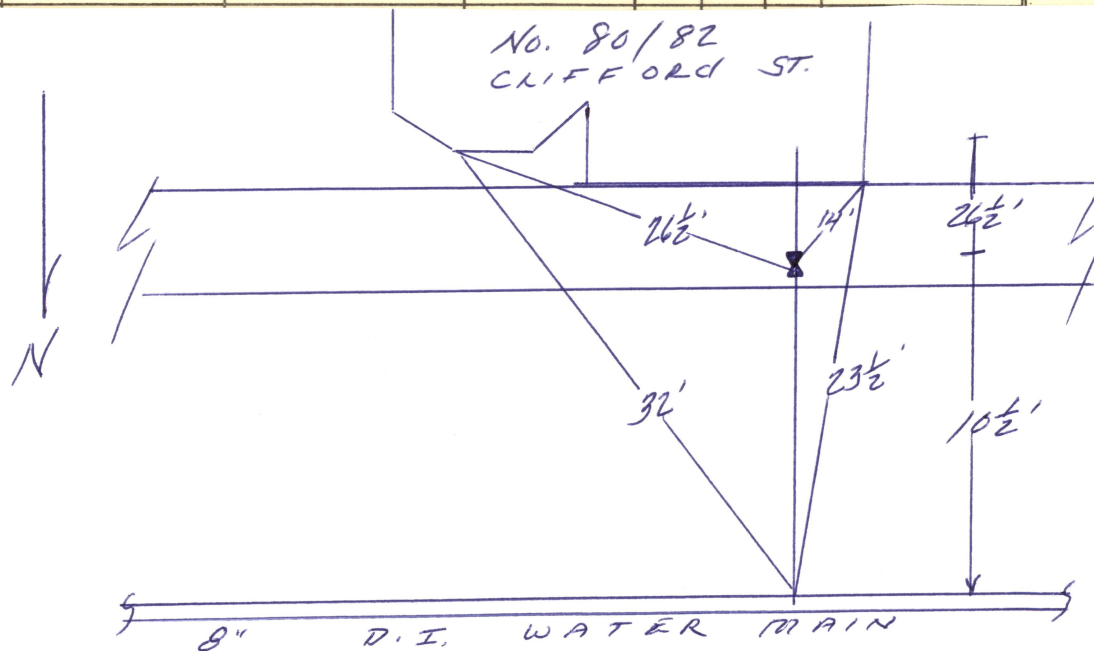
AFT.

REMARKS

METER HISTORY

CHARGE OUTS

| DATE | SET OUT | SIZE | MAKE | NUMBER | READING | TEST | | | REMARKS |
|------|---------|------|------|--------|---------|------|--|--|---------|
| | | | | | | | | | |
| | | | | | | | | | |
| | | | | | | | | | |



CLIFFORD ST