

## Record of Water Service Connection

PROJECT: 2022 Water Main Improvements Program New Bedford, MA

STREET: BEDFORD ST.

HOUSE No: 306

Contractor: C. Naughton Corp.

Date: 8-10-22

Type: CU Diameter (in): 1

Distance from main to curb stop (ft): 25'

Distance curb stop to meter (ft): ?

Distance from curb face to curb stop (ft): 2'

Depth of Service (ft): 4.5'

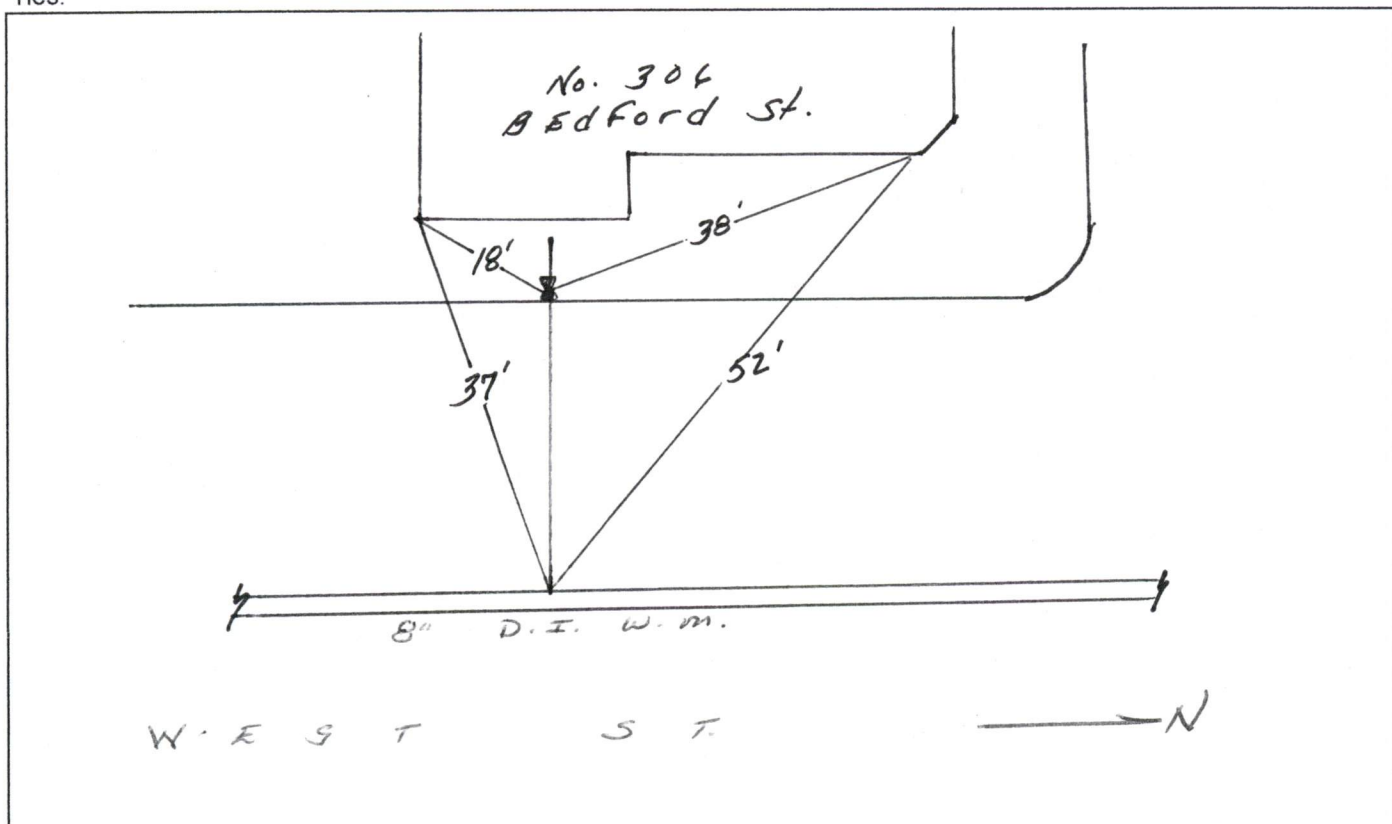
Total length of new pipe installed (ft): 32'

Curb Stop Replaced: Yes Size (in): 1

Corporation Replaced: Yes Size (in): 1

Ball Valve Replaced:  Size (in): 1

Ties:



Remarks:

CONNECT TO EXISTING 3/4" Copper @ #. (TYPE B)

OWNER:  
31-313

APPLICATION No.: 18863

TAP CLEARED

DATE \_\_\_\_\_

BEF.

AFT.

REMARKS

### 1" Copper Service

08/10/2022 2022 Water main improvement program

Contractor: C. Naughton Corp.

Type CU Diameter 1"

Distance from main to curb 25'

Distance from curb stop to meter N/A

Distance curb face to curb stop 2'

Depth of Service 4.5'

Total length of new pipe installed 32'

Curb Stop replaced yes size 1"

Corporation replaced yes 1"

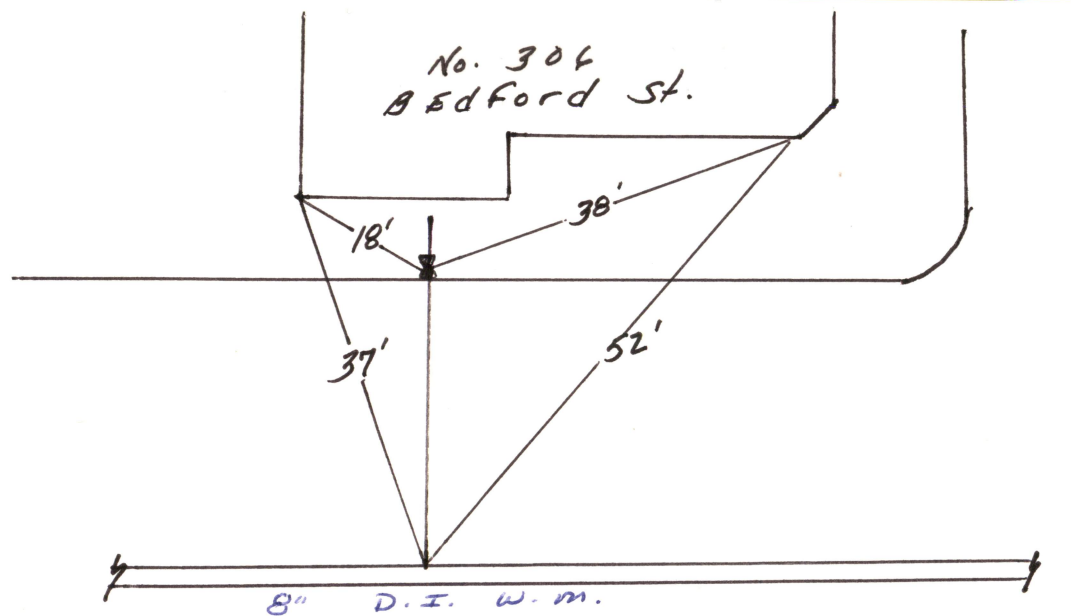
Ball Valve replaced yes 1"

Remarks: Connect to existing 3/4" Copper @PL (Type B)

# METER HISTORY

## CHARGE OUTS

DATE	SET OUT	SIZE	MAKE	NUMBER	READING	TEST			REMARKS



W E S T S T

→ N



APPLICATION No.: 18863

TAP CLEARED

LOCATION: 306 Bedford St.

OWNER: Harold Alberts

MEASURES: 5/8" L lead Aug. 7, 1922

S from Bedford St. 46.0 ft.

E from W line West St. 8.8 ft.

N from S line house 13.3 ft.

Nov. 12, 1970 Renewed from 1/2 ft. outside curb stop to property line.

8 ft. - 3/4" Copper tubing 3/4" Hays curb stop

2 wipe joints

- - -

4/30/93: Renewed from prop line to ins. cellar

Stock: 10ft 3/4" copper tubing (supplied by plumber)

same curb stop 1-Caldwell stop box 1-3/4x3/4 cop-cop cplg.comp

=====

5/5/93: Renewed from main to curb stop Stock: 10ft 3/4" copper tubing 1-3/4" curb stop same stop box 1-3/4x5/8 Fig 413

DATE

BEF.

AFT.

REMARKS

#13073

9318-6347

clear Elect.

5/5/93: tap reamed

[illegible]

## CHARGE OUTS

[illegible]