

APPLICATION No.: 16288

LOCATION:

91 CLIFFORD ST.

OWNER:

William Maudsley

31-313

|           |               |          |            |
|-----------|---------------|----------|------------|
| Measures: | 5/8"          | L Lead   | 07.08.1915 |
|           | W from        | Concord  | 194.4'     |
|           | S from N line | Clifford | 8.5'       |
|           | E from W line | House    | 2.5'       |

1" Copper Service

08/31/2022 2022 Water main improvement program

Contractor: C. Naughton Corp.

Type CU Diameter 1"

Distance from main to curb 23.5'

Distance from curb stop to meter 21.5'

Distance curb face to curb stop 1.5'

Depth of Service 4.5'

Total length of new pipe installed 45'

Curb Stop replaced yes size 1"

Corporation replaced yes 1"

Ball Valve replaced yes N/A

Remarks: Type C - Connect to 1" Copper to meter 12' Lead pipe removed

## TAP CLEARED

DATE

BEF.

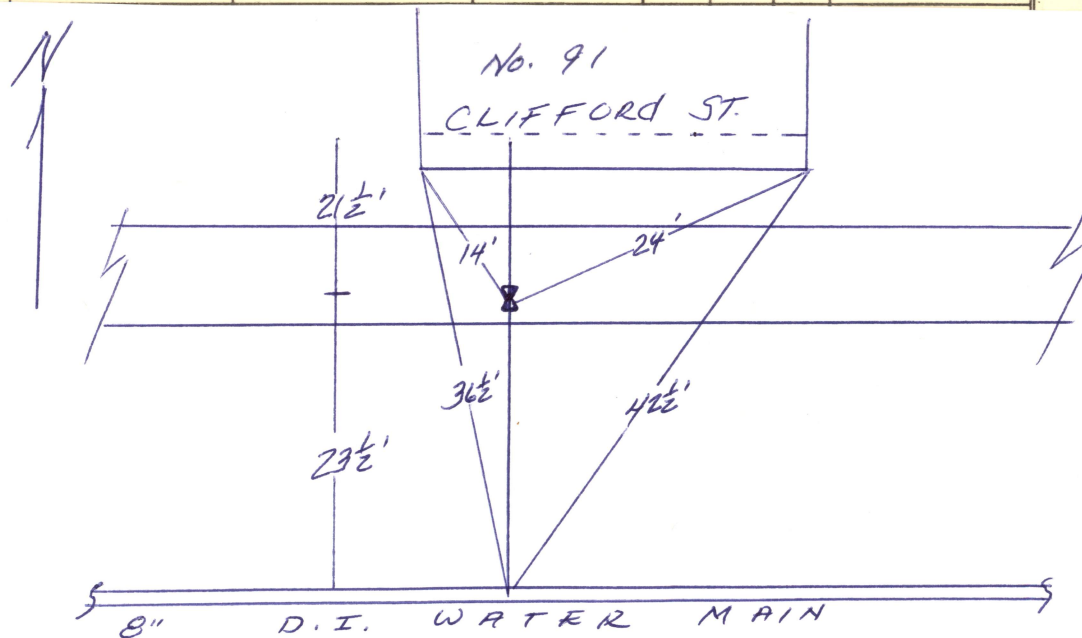
AFT.

REMARKS

# METER HISTORY

## CHARGE OUTS

| DATE | SET<br>OUT | SIZE | MAKE | NUMBER | READING | TEST |  |  | REMARKS |
|------|------------|------|------|--------|---------|------|--|--|---------|
|      |            |      |      |        |         |      |  |  |         |
|      |            |      |      |        |         |      |  |  |         |
|      |            |      |      |        |         |      |  |  |         |



C L I F F O R D S T