

Record of Water Service Connection

PROJECT: LEAD SERVICE LINE REPLACEMENT PROGRAM - PHASE II

SERVICE ID: 15532 ADDRESS: 49 STREET: WILLOW ST

CONTRACTOR: C. NAUGHTON CORP DATE: 5/12/2025

TYPE:

FULL (MAIN TO METER): ☐

PUBLIC (MAIN TO CURB STOP): ☐

PRIVATE (CURB STOP TO METER): ☒

MEASUREMENTS:

MAIN TO CURB STOP (FT): 20.0

CURB STOP TO METER (FT): 24.6

CURB FACE TO CURB STOP (FT): 1.6

SERVICE DEPTH (FT): 4.0

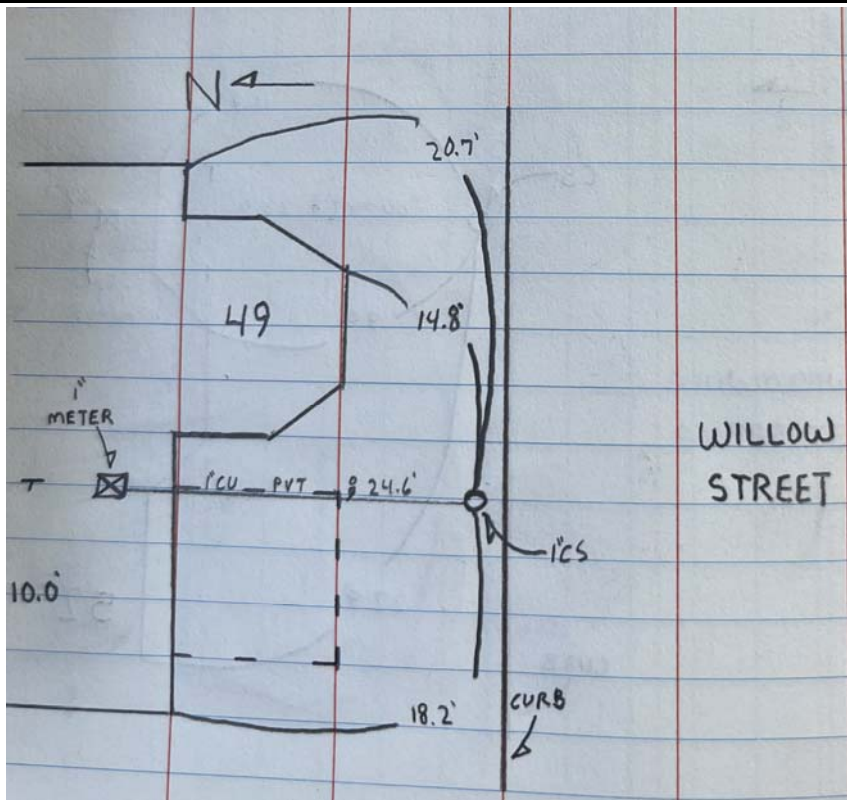
WATER PRESSURE (PSI): 40

SERVICE LINE REPLACEMENT:

| | (YES/NO) | SIZE | MATERIAL |
|-----------------------------|----------|------|----------|
| SERVICE LINE (MAIN TO CS): | NO | 3/4" | COPPER |
| SERVICE LINE (CS TO METER): | YES | 1" | COPPER |
| CORPORATION: | NO | 3/4" | |
| CURB STOP: | YES | 1" | |
| BALL VALVE: | YES | 1" | |
| METER: | YES | 1" | |

SERIAL NUMBER: 18640703

TIES:



Remarks:

APPLICATION No.: 15532

TAP CLEARED

✓

LOCATION: 49 Willow

OWNER: Elizth Wohn

MEASURES: $3/4''$

| | | |
|----------|--------|----------|
| W from | Cedar | 96.0 ft. |
| S from N | Willow | 7.0 ft. |
| E from W | house | 11.0 ft. |

7/1/80: Renewed 6" outside curbstop to property line.
5 ft.-3/4" copper; 2-5/8" x 3/4" lead-cop. adapt. XXS;
3/4" curb stop; Caldwell stop box;

MAY 6 - 1982 --Tilcon renewed from the main to the curb stop. 21.5 ft.-3/4" copper; same curb stop; stop box; 1" x 3/4" Fig. 413;

[illegible]