

APPLICATION No.: 15471

LOCATION: 250 Whitman St

TAP CLEARED

OWNER:

31-313

MEASURES: W X Bowditch 270.2 ft
 N X S Whitman St 8.1 ft
 W X E House 10.8 ft

1" Copper Service 4/11/2018

Lead Service Line Replacement Program

Phase 1, Contractor P Gioioso & Son

Type CU, Diameter 1in, Water pressure 70

Distance from main to curb stop (ft) 9.8

Distance from curb stop to meter (ft) 20

Distance from curb face to curb stop (Ft) 1.3

Depth of service (ft) 4

Total length of new pipe installed (Ft) 29.8

Curb stop replaced: Yes size 1"

Corporation replaced: Yes size 1"

Ball valve replaced: Yes size 1"

DATE

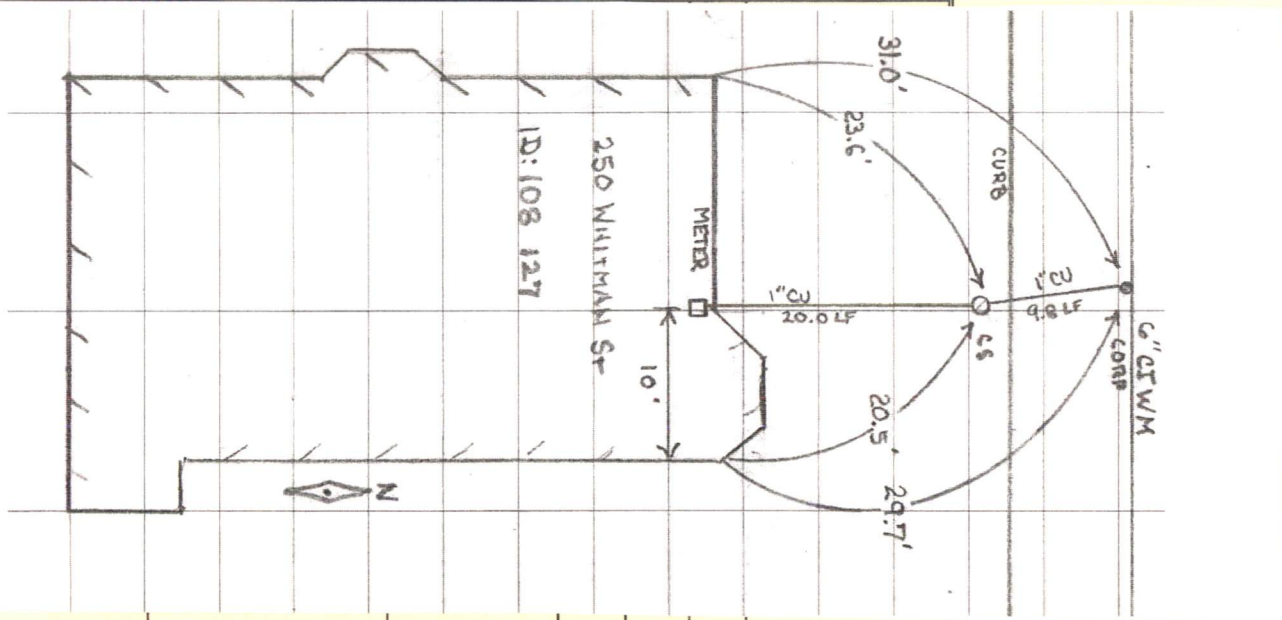
BEF.

AFT.

REMARKS

[illegible][illegible]

CHARGE OUTS

[illegible]