

APPLICATION No.: 15418

LOCATION:

170 CLIFFORD ST.

OWNER:

Paul Timmins

31-313

MEASURES:

5/8"

E from

Ashley Blvd

112'

S from N line

Clifford

8.5'

E from W line

House

14'

1" Copper Service

09/15/2022 2022 Water main improvement program

Contractor: C. Naughton Corp.

Type CU Diameter 1"

Distance from main to curb 10'

Distance from curb stop to meter 7'

Distance curb face to curb stop 1.50

Depth of Service 4.50'

Total length of new pipe installed 17'

Curb Stop replaced yes size 1"

Corporation replaced yes 1"

Ball Valve replaced yes N/A

Remarks: Type B

TAP CLEARED

DATE

BEF.

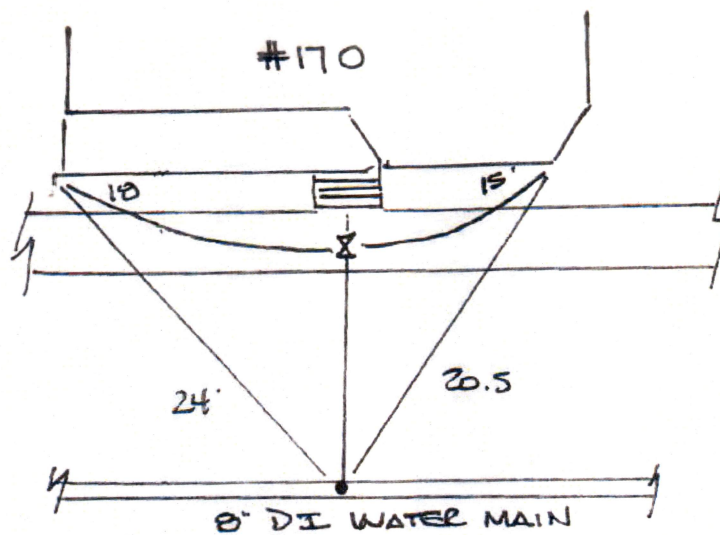
AFT.

REMARKS

METER HISTORY

CHARGE OUTS

| DATE | SET OUT | SIZE | MAKE | NUMBER | READING | TEST | | | REMARKS |
|------|------------|------|------|--------|---------|------|--|--|---------|
| | | | | | | | | | |



CLIFFORD ST.