

APPLICATION No.:

LOCATION:

31-313

Measures:

5/8"

H Lead

10.23.1912

E from

## Concord

125.9'

N from S line

Clifford

9'

E from W line

House

2'

## 1" Copper Service

08/24/2022 2022 Water main improvement program

Contractor: C. Naughton Corp.

Type CU Diameter 1"

Distance from main to curb 8.5'

Distance from curb stop to meter 18'

Distance curb face to curb stop 1.5'

Depth of Service 4.5'

Total length of new pipe installed 26.5'

Curb Stop replaced yes size 1"

Corporation replaced yes 1"

Ball Valve replaced yes 1"

Remarks: Type C- 1" Copper to meter, 10' Lead removed.

TAP CLEARED

DATE \_\_\_\_\_

BEF.

AFT.

REMARKS

[illegible]

---



## Record of Water Service Connection

PROJECT: 2022 Water Main Improvements Program New Bedford, MA

STREET: CLIFFORD ST.

HOUSE No: 56

Contractor: C. Naughton Corp.

Date: 8-24-22

Type: CU

Diameter (in):

1

Distance from main to curb stop (ft):

8 1/2'

Distance curb stop to meter (ft):

18'

Distance from curb face to curb stop (ft):

1 1/2'

Depth of Service (ft):

4 1/2'

Total length of new pipe installed (ft):

26 1/2'

Curb Stop Replaced: Yes

Size (in):

1

Corporation Replaced: Yes

Size (in):

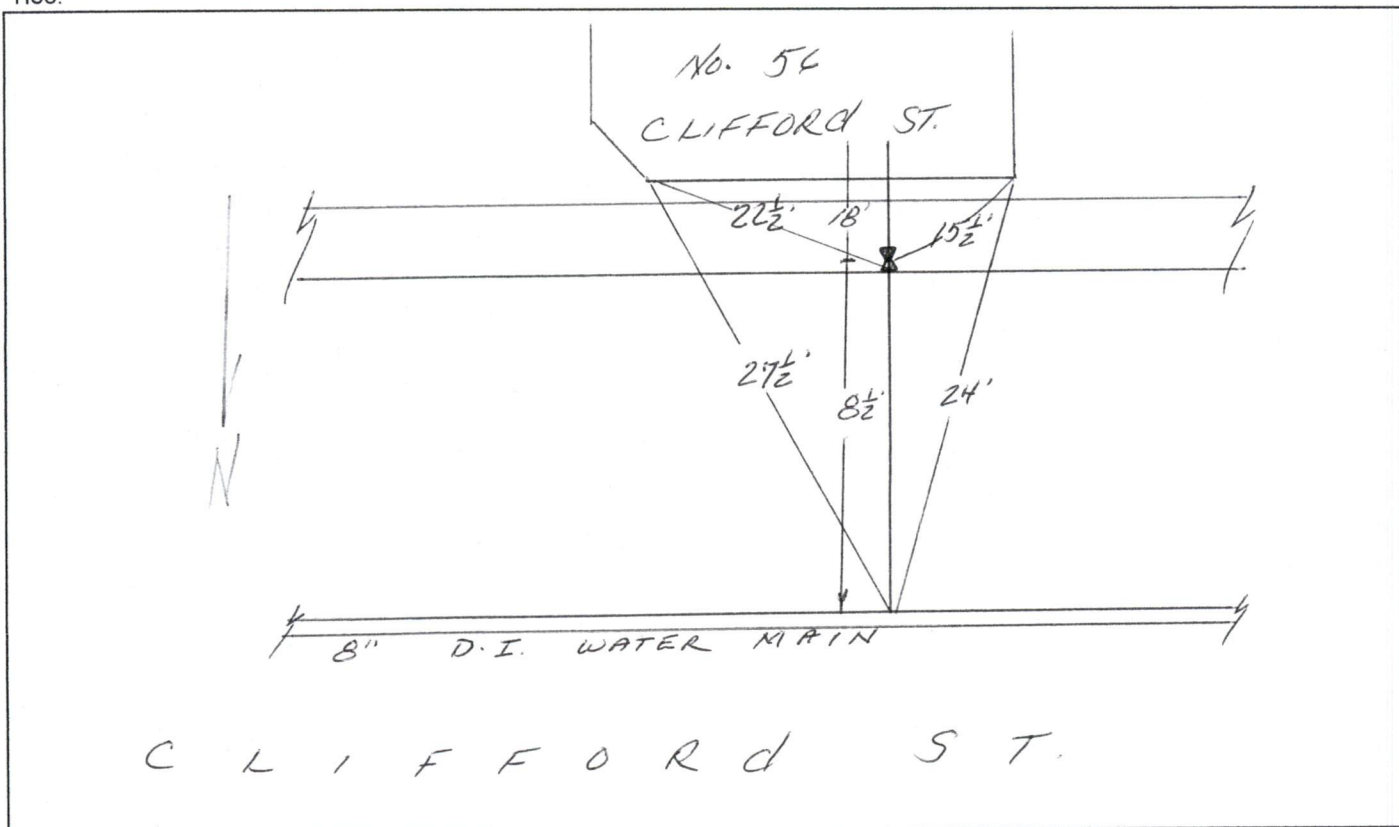
1

Ball Valve Replaced:

Size (in):

1

Ties:



Remarks:

TYPE C - 1" COPPER TO METER, 10' LEAD REMOVED.