

APPLICATION No.: 13505 3/4" L lead

TAP CLEARED

1198

LOCATION: 86 Clifford St. S.S. W. of Concord St.

OWNER: Joseph Fortin

MEASURES: 3/4"	L lead	July 11, 1910
W from	Concord	128.2 ft.
N from Sline	Clifford	8.0 ft.
W from E line	House	13.5 ft.

Oct. 8, 1977: Renewed 6" outside curb stop to 2 ft. inside curbstop.  
2 1/2 ft.-3/4" copper; 3/4" curb stop; 2-5/8" x 3/4" lead to copper  
adapt. XXS; Caldwell stop box;

Dec. 8, 1980: Renewed from main to the cellar.  
28.5 ft.-3/4" copper (8 ft. inside)  
1-3/4" curb stop Same stop box  
1-5/8" x 3/4" Fig. 413 Tap reamed

9/23/80: needs new shut off--owner Raymond C Parker  
checked by E Ponte

1" Copper Service

09/07/2022 2022 Water main improvement program

Contractor: C. Naughton Corp.

Type CU Diameter 1"

Distance from main to curb 9.5'

Distance from curb stop to meter N/A

Distance curb face to curb stop 2'

Depth of Service 4'

Total length of new pipe installed 16'

Curb Stop replaced yes size 1"

Corporation replaced yes 1"

Ball Valve replaced yes N/A

Remarks: Type B - Connect to 3/4" Copper @ PL

DATE

BEF.

AFT.

REMARKS

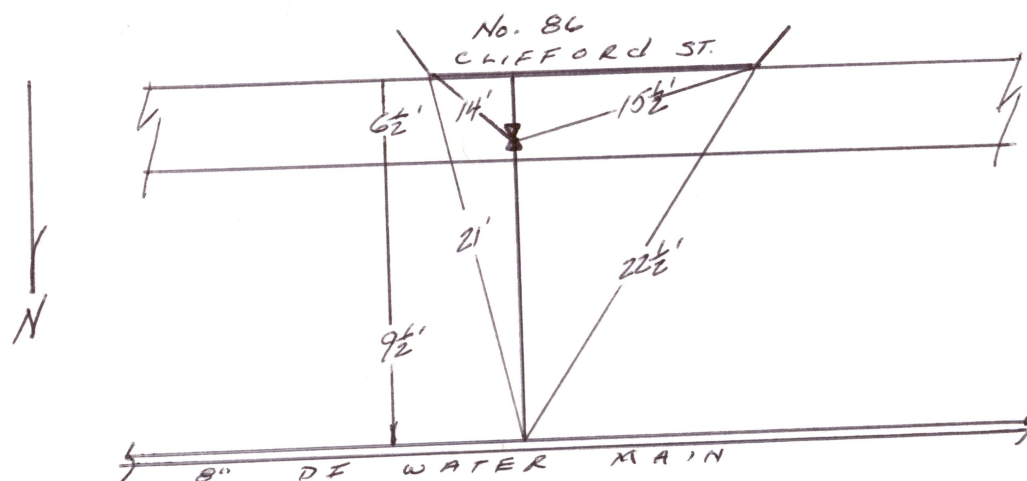
DEC 8 - 1980

Reamed

# METER HISTORY

DATE	SET OUT	SIZE	MAKE	NUMBER	READING	TEST			REMARKS
1/11/67		3/4	Rock Mag	19736517					

## CHARGE OUTS



C L I F F O R D S T



## Record of Water Service Connection

PROJECT: 2022 Water Main Improvements Program New Bedford, MA

STREET: Clifford ST

HOUSE No: 86

Contractor: C. Naughton Corp.

Date: 9-7-22

Type: CU Diameter (in): 1

Distance from main to curb stop (ft):  $9\frac{1}{2}'$

Distance curb stop to meter (ft): -

Distance from curb face to curb stop (ft): 2'

Depth of Service (ft): 4'

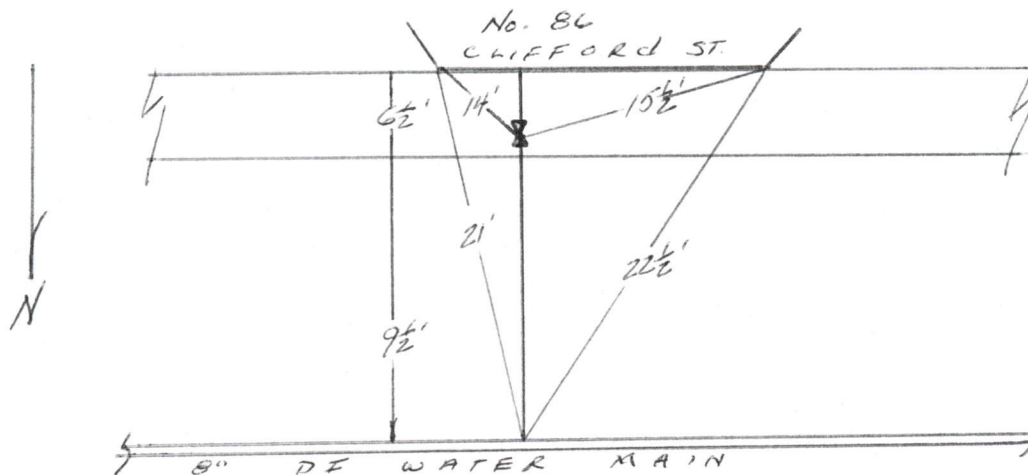
Total length of new pipe installed (ft): 16'

Curb Stop Replaced: Yes Size (in): 1

Corporation Replaced: Yes Size (in): 1

Ball Valve Replaced: Size (in):

Ties:



CLIFFORD ST

Remarks:

TYPE B - CONNECT TO  $\frac{3}{4}"$  COPPER @  $\#$ .