

APPLICATION No.: 13011

LOCATION: 211 Hathaway St

OWNER:

31-313

MEASURES. 1" Copper Service

MEASURES: 1" Copper Service
05/31/2018 Lead Service Line Replacement Program

Phase 1, Contractor P Gioioso & Son

Type CU, Diameter 1in, Water pressure 65

Distance from main to curb stop (ft) 25.0

Distance from curb stop to meter (ft) N/A

Distance from curb face to curb stop (ft) 2.0

Depth of service (ft) 4.0

Total length of new pipe installed (ft) 25.0

Curb stop replaced: yes size 1"

Corporation replaced: yes size 1"

Ball valve furnished: no

Remarks: 25 ft main corp to curb stop

TAP CLEARED

DATE _____

BEF.

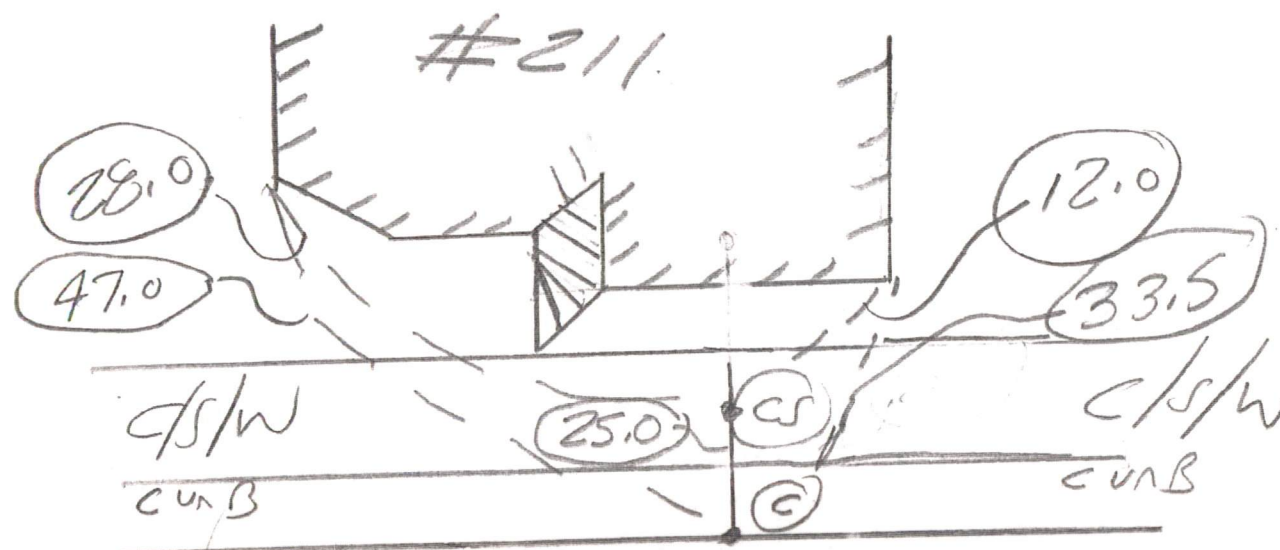
AFT.

REMARKS

METER HISTORY

CHARGE OUTS

DATE	SET OUT	SIZE	MAKE	NUMBER	READING	TEST	REMARKS



APPLICATION No.: 13011

TAP CLEARED 8525-0905

LOCATION: 211 Hathaway

OWNER: S. Filifrok

MEASURES: 5/8"

E from Church St. 115.5 ft.

S from N line Hathaway St. 9.0ft.

W from E line House 5.0 ft.

June 21, 1972 Repaired service leak from $\frac{1}{2}$ ft. outside of curb stop
to inside of cellar 21'- $3\frac{1}{4}$ " Copper tubing(13' inside)
 $3\frac{1}{4}$ " Hays curb stop 1 wipe joints
Caldwell stop Box

6/19/85: Renewed from main to a point 1.0 ft. Stock: 1.0ft. 3/4" copper tubing 1 3/4x5/8 lead to cop adapt.comp.xs 1 5/8" Fig.413

2/5/88 Renewed from 1ft outside curb stop to a point 1ft inside curb stop
2ft-3/4" copper tubing, 1-3/4" curb stop, 1-Caldwell stop box,
1-5/8x3/4 lead to cop adapt xs, 1-3/4x3/4 cop to cop colg comp

Beam Tap
Pow Pressing

[illegible]

CHARGE OUTS

[illegible]