

APPLICATION No.: 12845 4"

## TAP CLEARED

LOCATION: 1070 County St.

OWNER: Continental Baking Co.

P. J. RUG REPAIRS

MEASURES: 4" Gate 3"

Apr. 1909

N from S line

Adams

26.0 ft.

E from W line

County

19.8 ft.

N from N line

Building

3.5 ft.

2004 - 10" READ 1765

12814

INACTIVE  
SER

DATE

BEF.

AFT.

REMARKS

[illegible]

## CHARGE OUTS

[illegible]



APPLICATION No.: 17327C 2" C.I.

TAP CLEARED

DATE BEF. AFT. REMARKS

LOCATION: 1066 County St.

OWNER: Maurice Nault

D. J. RENTAL

MEASURES: 2"

C.I.

N from S line

Adams

126.0 ft.

E from W line

County

18.8 ft.

N from N line

Bldg.

3.5 ft.

Conn. of App. #12845 made by city

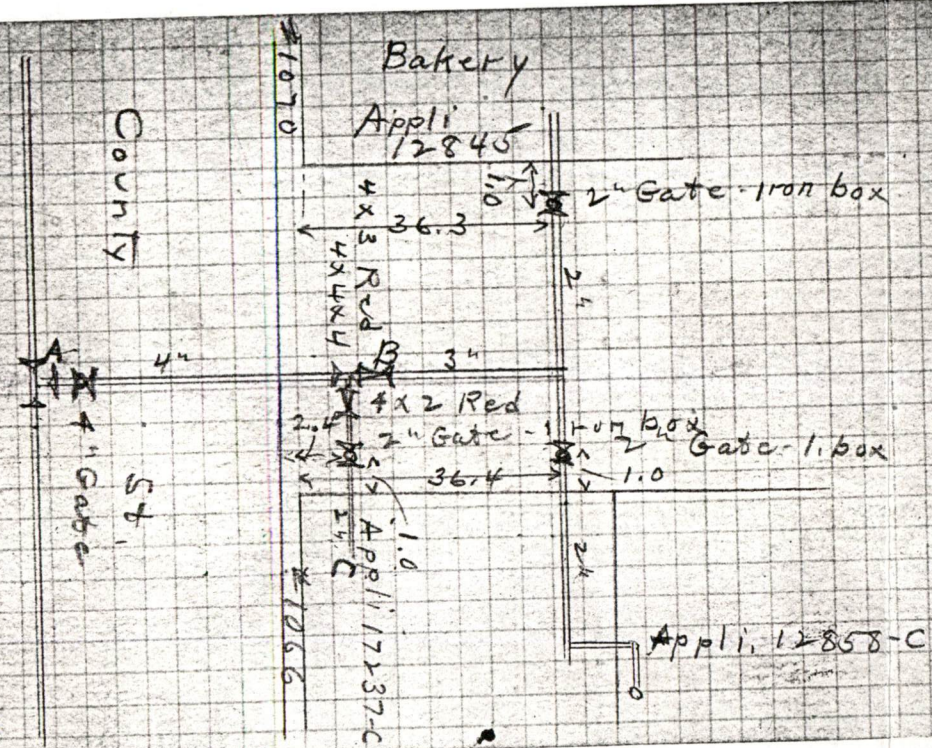
[illegible]

## CHARGE OUTS

[illegible]



8/5/33 replaced 2" I.P. pipe  
with 4" C.I. using 7' Bill  
Total bill \$68.32, Bill  
#33232.



June 11, 1919 - Replaced from A to B as  
shown. Read new from B to C as shown