

APPLICATION No.: 12837

LOCATION: 84 CLIFFORD ST.

OWNER: Marie Biron

31-313

Measures:	5/8"	H Lead	08.06.1909
	W from	Concord	94.9'
	N from S line	Clifford	8'
	W from E line	House	10'

### 1" Copper Service

09/07/2022 2022 Water main improvement program

Contractor: C. Naughton Corp.

Type CU Diameter 1"

Distance from main to curb 10.5'

Distance from curb stop to meter 21'

Distance curb face to curb stop 1.5'

Depth of Service 4.5'

Total length of new pipe installed 31.5'

Curb Stop replaced yes size 1"

Corporation replaced yes 1"

Ball Valve replaced yes N/A

Remarks: Type C – 1 Copper to meter 15' Lead pipe removed.

TAP CLEARED

DATE \_\_\_\_\_

BEF.

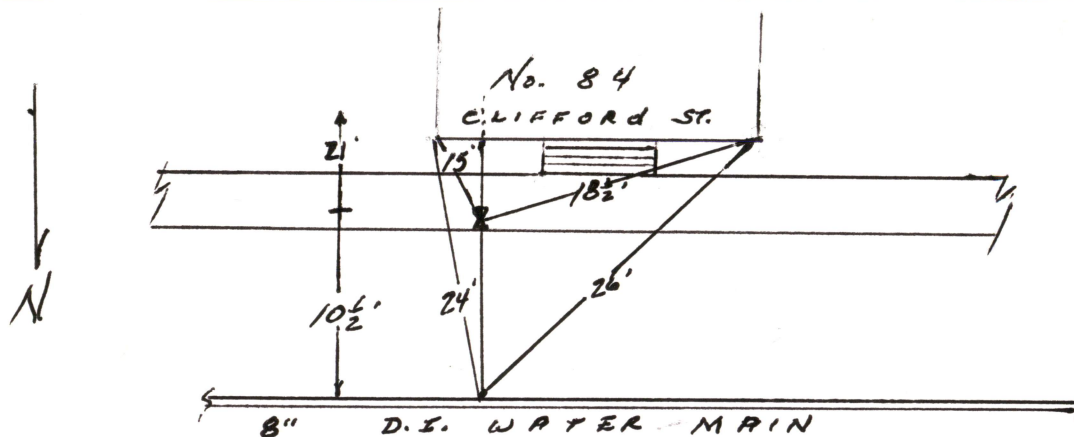
AFT.

REMARKS

# METER HISTORY

# CHARGE OUTS

DATE	SET OUT	SIZE	MAKE	NUMBER	READING	TEST			REMARKS



C L I F F O R D S T.

## Record of Water Service Connection

PROJECT: 2022 Water Main Improvements Program New Bedford, MA

STREET: Clifford ST.

HOUSE No: 84

Contractor: C. Naughton Corp.

Date: 9-7-22

Type: CU Diameter (in): 1

Distance from main to curb stop (ft): 10 1/2'

Distance curb stop to meter (ft): 21'

Distance from curb face to curb stop (ft): 1 1/2'

Depth of Service (ft): 4 1/2'

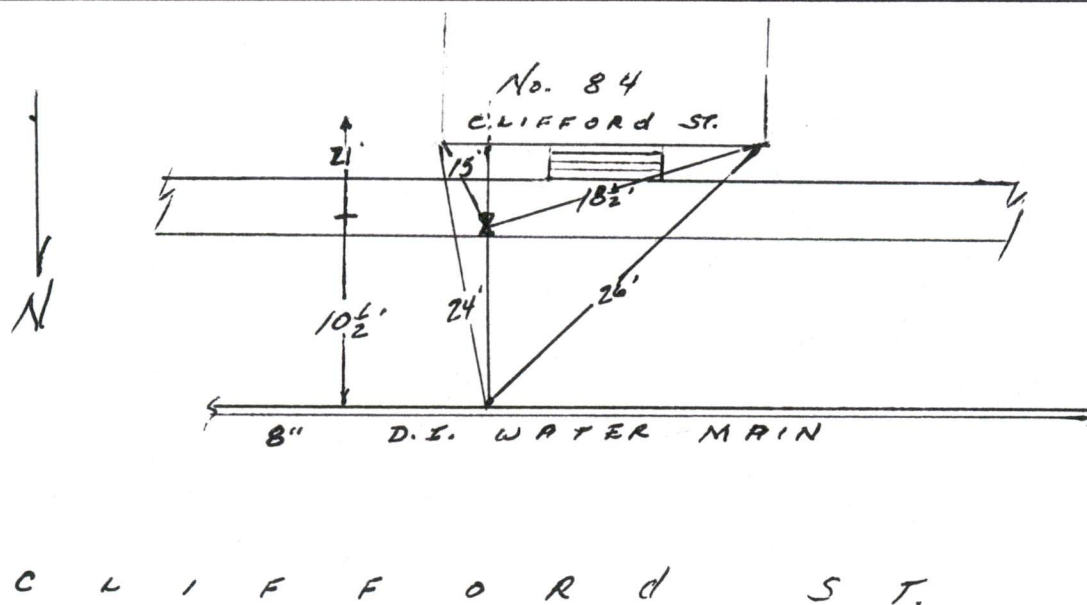
Total length of new pipe installed (ft): 31 1/2'

Curb Stop Replaced: Yes Size (in): 1

Corporation Replaced: Yes Size (in): 1

Ball Valve Replaced: Size (in):

Ties:



Remarks:

TYPE C - 1" COPPER TO METER.

15'-LEAD PIPE REMOVED.