

12103

340 Coffin Ave

OWNER:

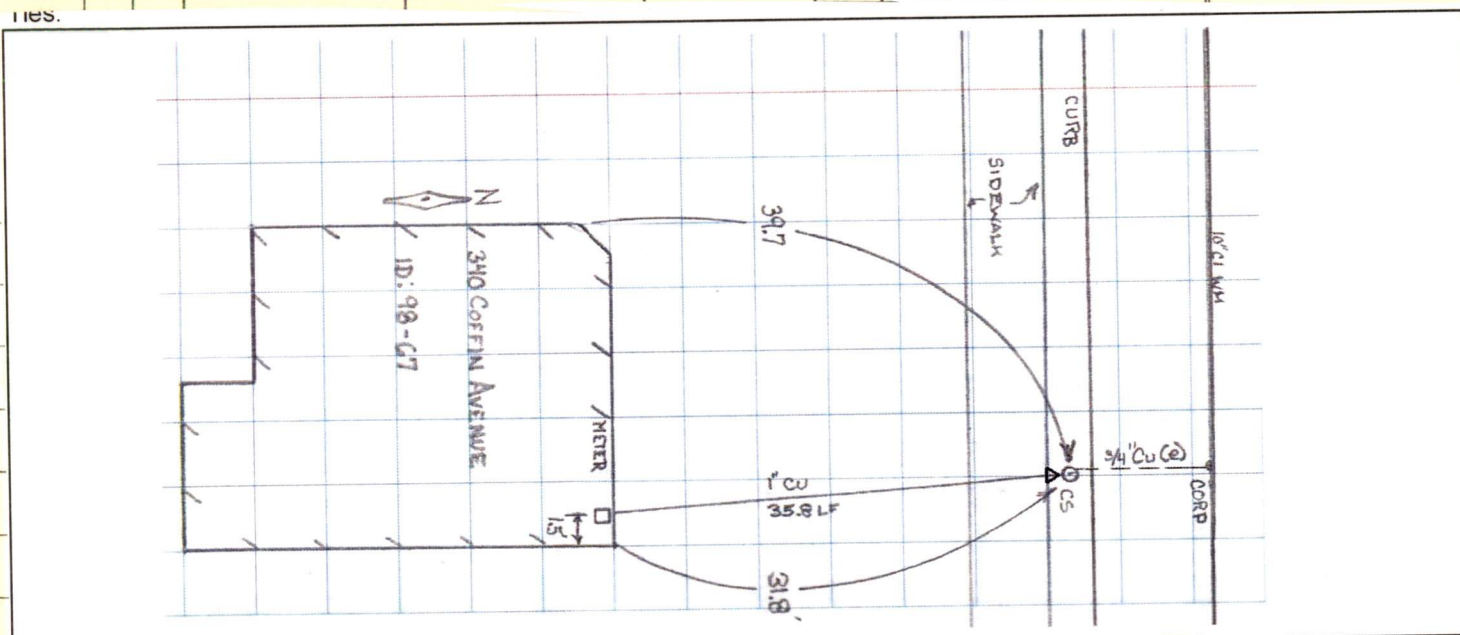
31-313

MEASURES:W from Ashley Blvd 301.9 ft
N from S line Coffin Ave 9.1 ft
W from E line House 5.9 ft
1" Copper Service
07/18/2018 Lead Service Line Replacement Program
Phase 1 Contractor P Gioioso and Son
Type Cu, Diameter (in)1, Water Pressure 70
Distance from main to curb stop (ft) 9.5 ft
Distance curb stop to meter (ft) 35.8
Distance from curb face to curb stop (ft) 1.6
Depth of service (ft) 4.0
Total length of new pipe installed (ft) 35.8
Curb stop replaced: no size 3/4"
Corporation replaced: no size 3/4"
Ball valve furnished: yes size 1"
Remarks: 1"-3/4" union installed 1.0 LF inside c

TAP CLEARED

DATE	BEF.	AFT.	REMARKS
------	------	------	---------

11/16/98 Ream

[illegible][illegible]