

SERVICE 33116

VOID

NEW BEDFORD WATER WORKS
APPLICATION FOR SERVICE AND METER

NEW BEDFORD

I HEREBY ACKNOWLEDGE the receipt of a copy of the Regulations prescribed in the Ordinance of the City, for the use of Water, and I request that the water may be furnished through a

$\frac{3}{4}$ inch CITY meter at THE CENTURY BLDG #4 CONDO
ASHLEY BLVD S x VICTORIA ST 180't

at such rates as may from time to time be established by the City.

I hereby agree to pay promptly the bill for the Service pipe laid down for my premises, and to pay all dues for water, and I agree to conform to the said Regulations and to all provisions of the Water Ordinances, until written notice is given by me or my agent to cut off the supply.

SEWER PERMIT #

P.130C/L.751

TELEPHONE

Service laid

Size and kind of pipe

$\frac{3}{4}$ COPPER

From

8" WATER LINE INSIDE PROPERTY W/S BLDG.

St.

Turned on

Meter Set

Reading

Location

STORAGE AREA (A-38) SEW COR BLDG.

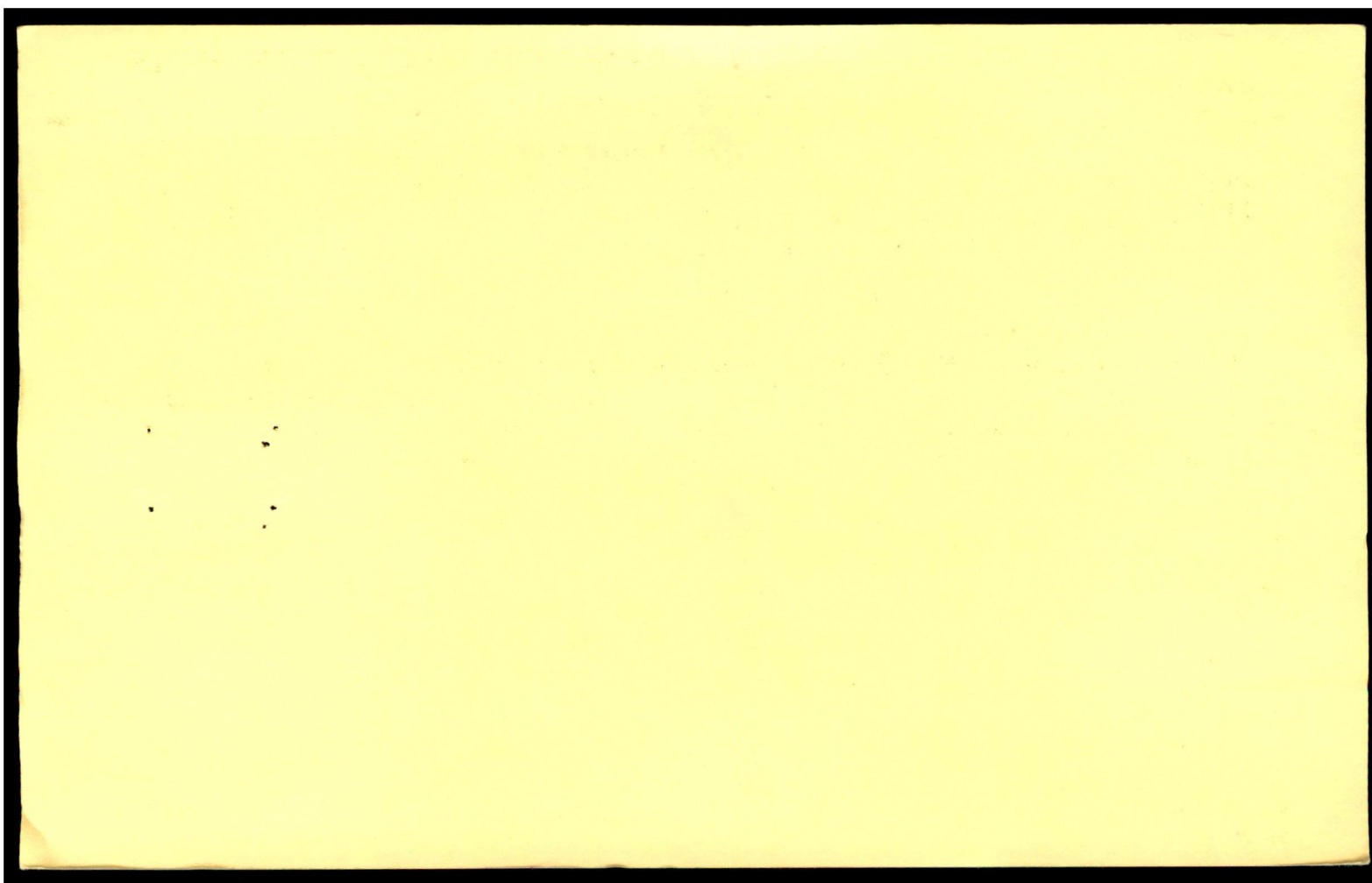
Building rates

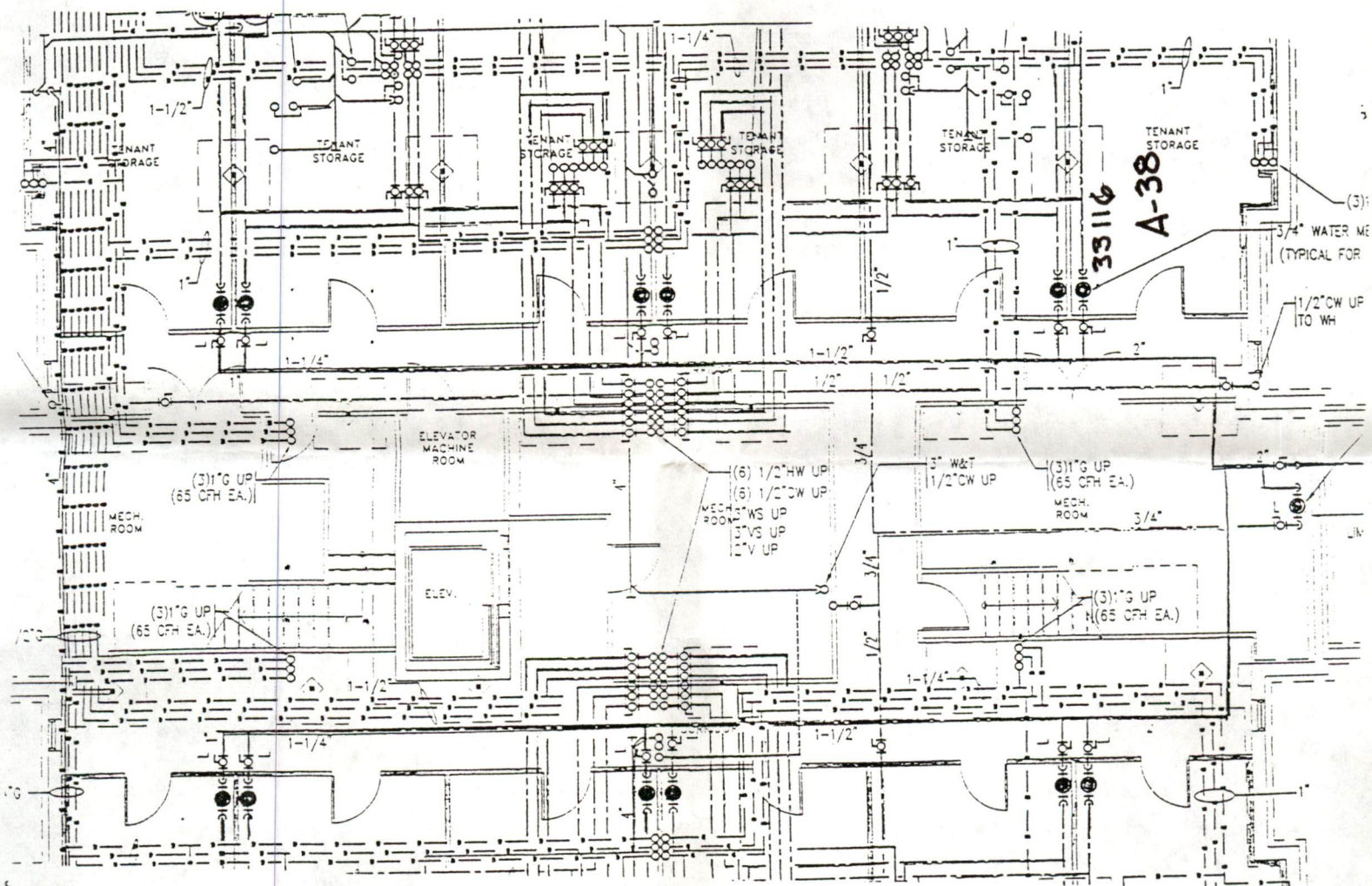
Paid

Cost of Service

Paid

31-727



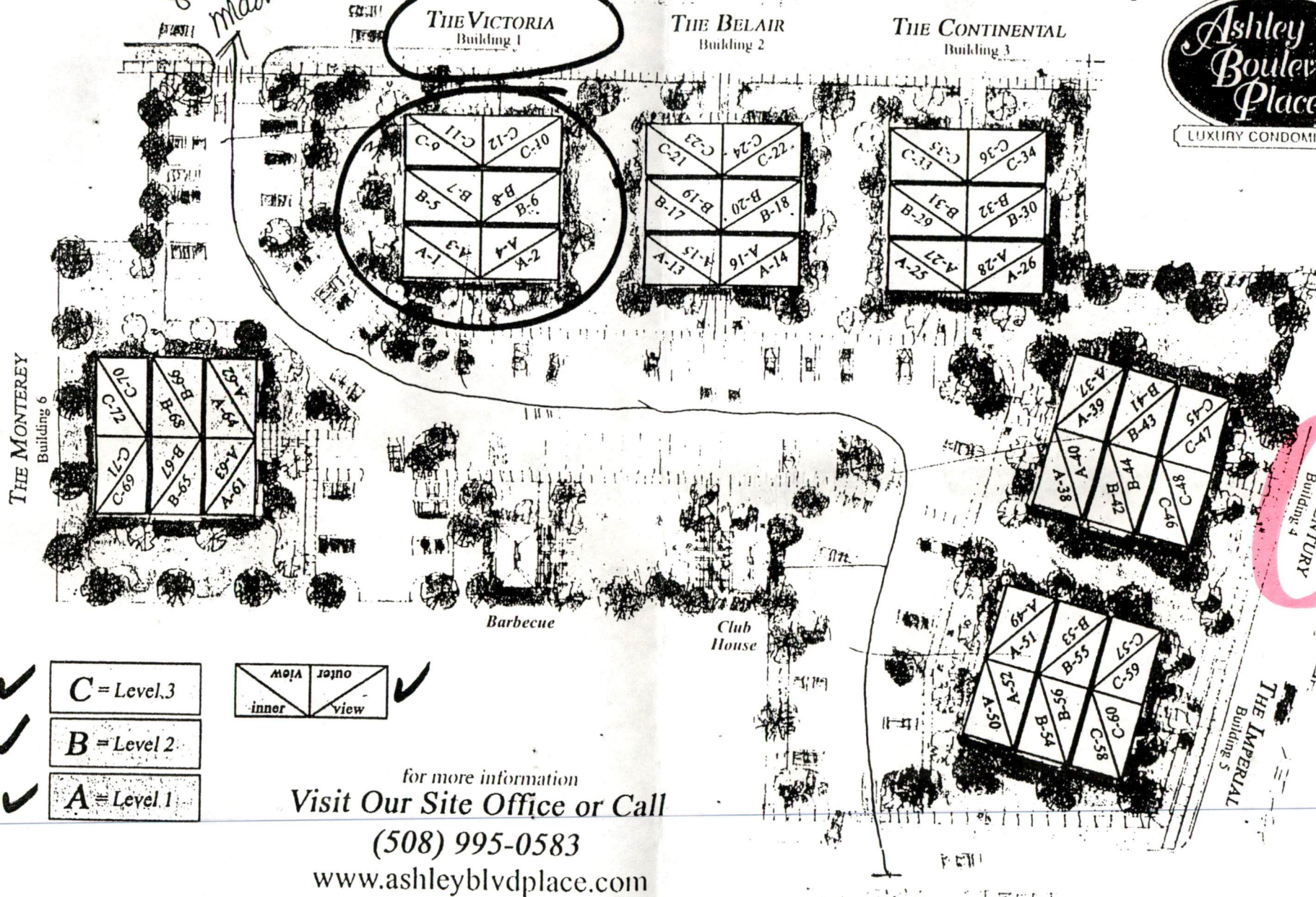


↓
N

An Overview of our "Private Gated Community"

↑ North

Ashley Boulevard Place
LUXURY CONDOMINIUMS



In a constant endeavor to improve our condominium community, we reserve the right to revise the design and/or specifications as well as price, terms, and availability. Oral representations cannot be relied upon as correctly stating the representations of the developer. Refer to this brochure and to documents required by Massachusetts statutes to be furnished by the developer to a buyer.

100

176 20

175 20

174 20

173 20

172 20

169 20

167 20

166 20

165 20

164 20

163 20

162 20

161 20

160 20

159 20

158 20

157 20

156 20

155 20

154 20

153 20

152 20

151 20

150 20

149 20

148 20

147 20

146 20

145 20

144 20

143 20

M

A

225 60.00

226 60.00

227 60.00

228 60.00

229 60.00

230 60.00

231 60.00

232 60.00

233 60.00

234 60.00

235 60.00

236 60.00

237 60.00

238 60.00

239 60.00

240 60.00

241 60.00

242 60.00

243 60.00

244 60.00

245 60.00

246 60.00

247 60.00

248 60.00

249 60.00

250 60.00

251 60.00

252 60.00

253 60.00

254 60.00

255 60.00

256 60.00

257 60.00

258 60.00

259 60.00

260 60.00

261 60.00

262 60.00

263 60.00

264 60.00

265 60.00

266 60.00

267 60.00

268 60.00

269 60.00

270 60.00

271 60.00

272 60.00

273 60.00

274 60.00

275 60.00

276 60.00

277 60.00

278 60.00

279 60.00

280 60.00

281 60.00

282 60.00

283 60.00

284 60.00

285 60.00

286 60.00

287 60.00

288 60.00

289 60.00

290 60.00

291 60.00

292 60.00

293 60.00

294 60.00

295 60.00

296 60.00

297 60.00

298 60.00

299 60.00

300 60.00

301 60.00

302 60.00

303 60.00

304 60.00

305 60.00

306 60.00

307 60.00

308 60.00

309 60.00

310 60.00

311 60.00

312 60.00

313 60.00

314 60.00

315 60.00

316 60.00

317 60.00

318 60.00

319 60.00

320 60.00

321 60.00

322 60.00

323 60.00

324 60.00

325 60.00

326 60.00

327 60.00

328 60.00

329 60.00

330 60.00

331 60.00

332 60.00

333 60.00

334 60.00

335 60.00

336 60.00

337 60.00

338 60.00

339 60.00

340 60.00

341 60.00

342 60.00

343 60.00

344 60.00

345 60.00

346 60.00

347 60.00

348 60.00

349 60.00

350 60.00

351 60.00

352 60.00

353 60.00

354 60.00

355 60.00

356 60.00

357 60.00

358 60.00

359 60.00

360 60.00

361 60.00

362 60.00

363 60.00

364 60.00

365 60.00

366 60.00

367 60.00

368 60.00

369 60.00

370 60.00

371 60.00

372 60.00

373 60.00

374 60.00

375 60.00

376 60.00

377 60.00

378 60.00

379 60.00

380 60.00

381 60.00

382 60.00

383 60.00

384 60.00

385 60.00

386 60.00

387 60.00

388 60.00

389 60.00

390 60.00

391 60.00

392 60.00

393 60.00

394 60.00

395 60.00

396 60.00

397 60.00

398 60.00

399 60.00

400 60.00

401 60.00

402 60.00

403 60.00

404 60.00

405 60.00

406 60.00

407 60.00

408 60.00

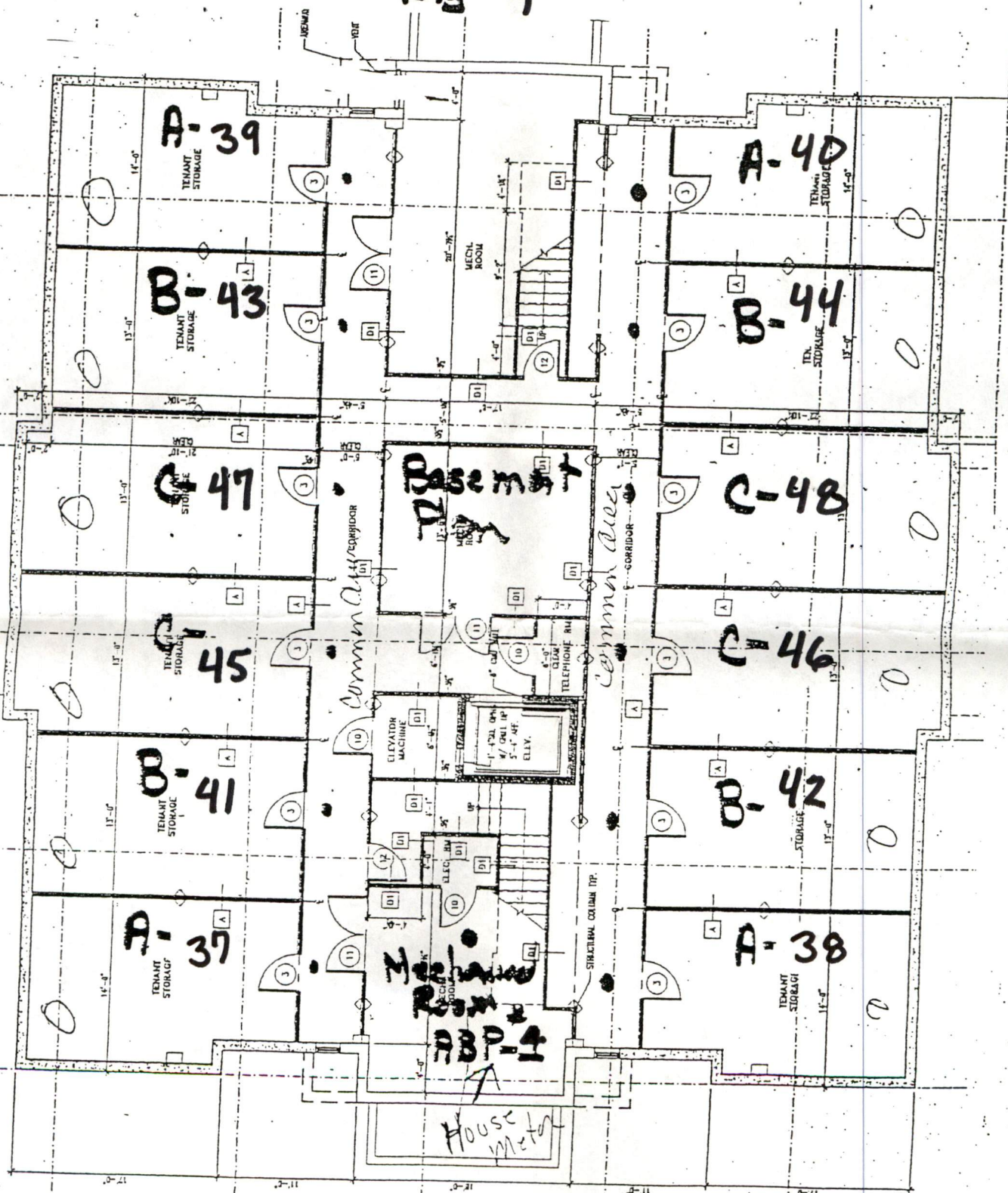
409 60.00

410 60.00

"THE CENTURY"
ASHLEY BLVD
Blg # 4

N ← → S ↑ E

Basement Plan



Property Parking

Indicates City shut off