

Joseph Perry

64

4/23/96

DP

#31985 W.S. Liberty St N x Smith St.

Please install a 1½" copper ser. to supply an office
bldg. from Liberty St. Meter (city) in utility room

Measures of 1½" Curb Stop:

N x N line Smith St.	105.6 ft.
E x W line Liberty St.	7.5 ft.
S x N line Bldg.	19.0 ft.

Main is 18 ft. E x W line

Work done April 17, 1996

(Curb stop is N x hydrant 4.0 ft.)

Main to curb stop	10.5 ft
-------------------	---------

Measures of 3/4" curb stop (Stock Room)

N x N line Stock Room 4.6 ft.

W x E line Stock Room 2.9 ft.

1½" Tee:

N x N line Bldg. 15.3 ft.

Measures of 3/4" Curb Stop: (Bomb Shed)

N x N line Bldg. 3.3 ft.

E x W line Bldg. 38.7 ft.

W x E line Jog 2.5 ft.

1½" Tee:

N x N line Bldg. 21.0 ft.

3/4" x 3/4" x 3/4" Tee (Cement Shed)

N x N line Bldg. 7.2 ft.

#31985 W.S. Liberty St. N x Smith St.

Stock supplied by D.P.W.

92.3 ft. - 1½" Copper tubing

1 - 1½" Mueller Corporation tap

1 - 1½" Ford Curb Stop

1 - #10 Gate Box

2 - 1½" x 1½" x ¾" Tee, compression

1 - ¾" x ¾" x ¾" tee, compression

3 - 1½" x 1½" cop to cop cplg., comp.

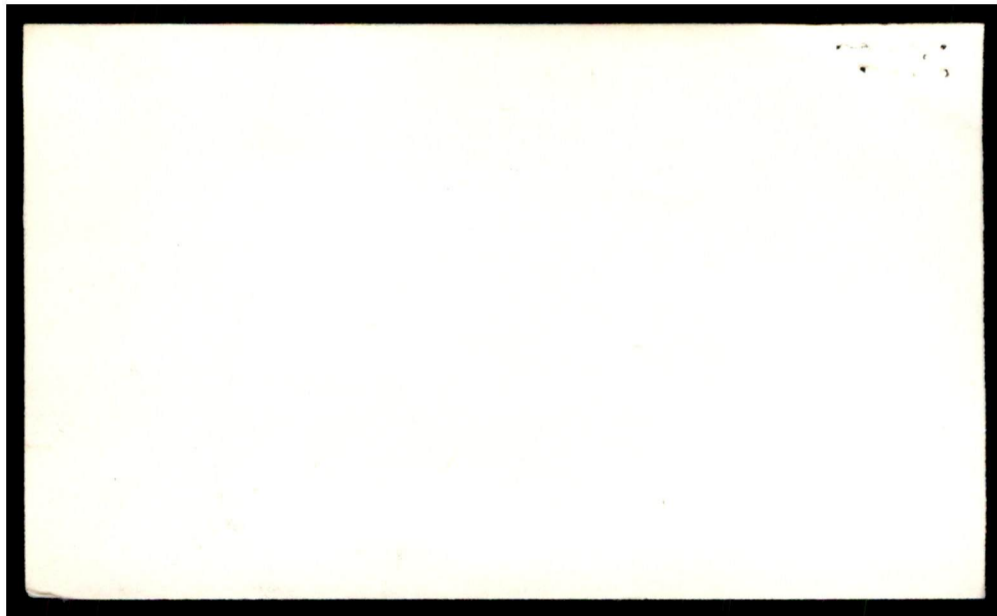
1 - 1½" Elbow (18'W x E line Bldg., 18.8' N x N line

2 - ¾" Curb stop - supplied by Water Dept. bldg.

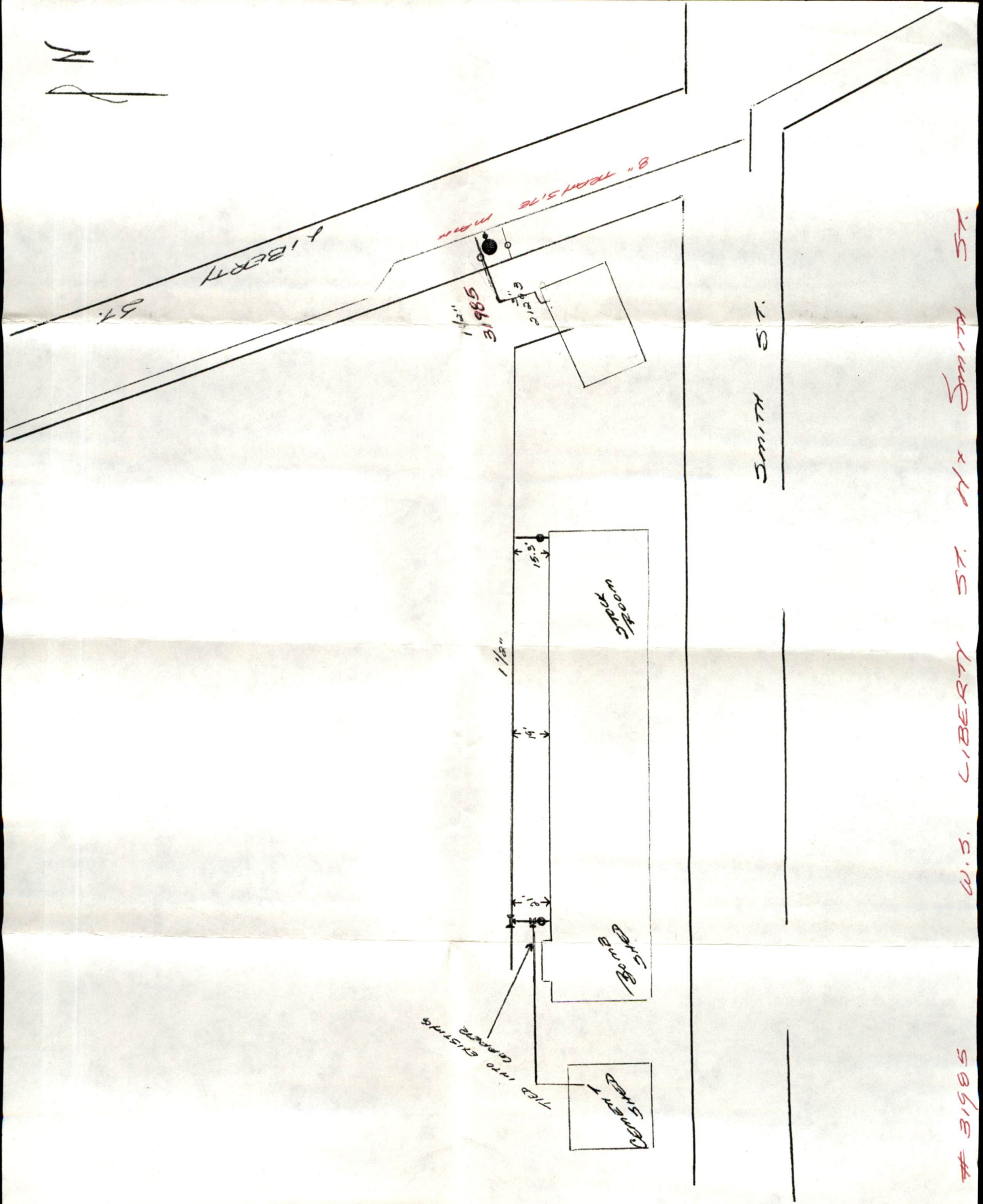
2 - Stop Box, compl. - supplied by Water Dept.

28 ft. - ¾" copper tubing - supplied by Water Dept.

1 - 8" x 1½" D.S. Service Saddle



N



31985 W.S. LIBERTY ST. N x Smith ST. 58615

