

Tel. 997-4800 N.B. Housing Authority P.O. Box A-2081
4/4/91 by Edward Konetchy N.B., Ma. 02741

#31570 S.S. Amanda Ave. (S) W x Church St.

Please install a 4" Fire Supply (ductile) to supply the
neighborhood center. from Amanda Ave. (S).

Measures of 4" Darl. gate valve, mech.

W x W line Church St. 147.0 ft.

N x N line Bldg. 17.0 ft.

W x W line Bldg. 5.0 ft.

Work done May 13, 1991

Bill Smith cut in 4" x 8" tee on old main for new
Community Bldg. W x Church S t.

Stock:

1 - 8" x 4" Tee, ductile, mech.

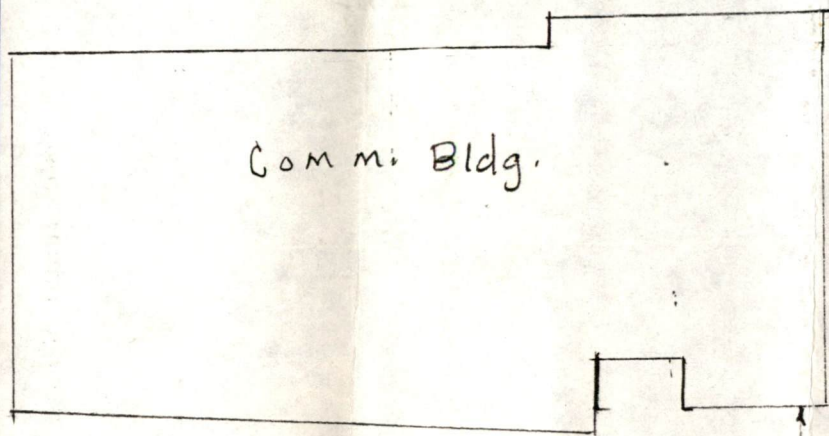
1 - 4" Darl. gate valve, mech.

2 ft. - 8" ductile pipe

1 - 8" FCI Ford cast cplg.

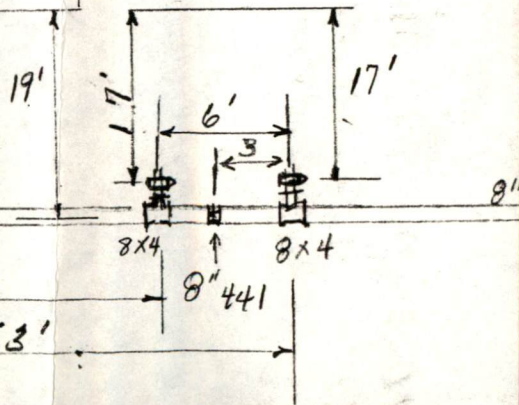
18" - 4" ductile pipe

Inspection.....	\$	15.00
Turn on charge.....	\$	25.00
		<hr/>
	\$	40.00



Comm. Bldg.

↑ S



01518 1 WxWL Church St. - 147'

65518 2 WxWL Church St. - 153'

