

Tel. 2-8095

23 Rod. Fr. Bld.

3.3

#28572

December 6, 1971

Laura P. Maille

E S. John St. (Dead End)

S. x Westbrook St.

Please install 1" copper service to supply bungalow. Meter: inside cellar wall. Service from John St. Main to be extended. 50¢

Measures of 1" Curb Stop:

S x S line Westbrook St.	197.5 ft.
W x E " John St.	30.0 ft.
N x N " House	44.0 ft.
W x W " "	39.0 ft.

Main is ~~W x E line~~. W x E line.  
Work done Jan. 14, 1972

85 ft. - 1" Copper tubing (75' out: 10' ins.)	
@ 1.30' .....	\$ 110.50
Labor .....	\$ 94.54
1 1" Hays Corporation .....	\$ 8.50
1 1" Hays Curb Stop .....	\$ 14.00
1 <i>ACUSHNET</i> Stop Box, complete .....	\$ 10.00
Carting .....	\$ 10.00
B-100 Mueller tapp. mach. use .....	\$ 14.00
2 1" Meter cplg. @ 2.50 ea .....	\$ 5.00
Loader Use: 4 hrs. @ 7.00 hr .....	\$ 28.00
St. cut: 60' x 3' Dirt .....	\$ N/C
Sidewalk cut: 13' x 3' Dirt .....	\$ N/C
1 1" Cop to cop cplg. ....	\$ .40
	<hr/>
	\$294.94

*P*

## MEASURE CORRECTION

February 4, 1972

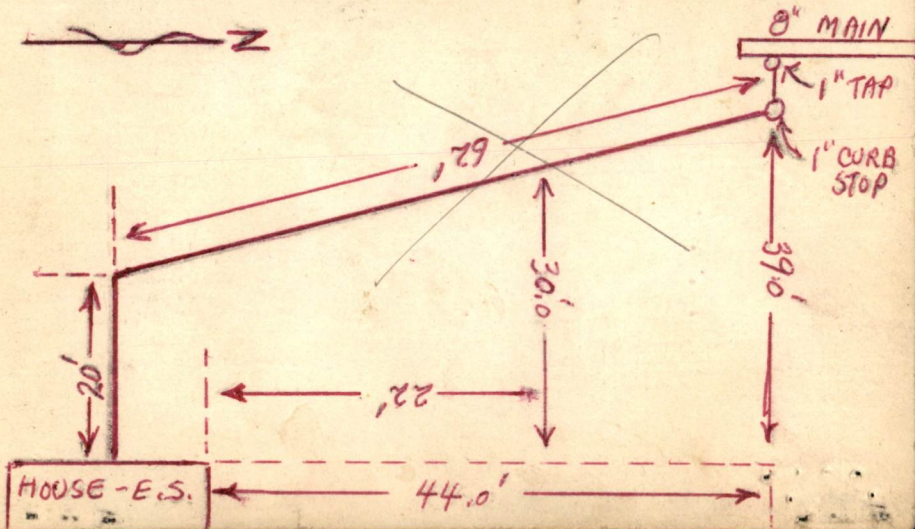
Service No. 28572 - E. S. John St.

S x Westbrook St.

Change Measures to read as follows:

S x S	line	Westbrook St.	97.5'
N x N	"	House	44.0
W x E	"	John Street	30.0
W x W	"	House	39.0

Over - sketch



Service Relocated  
364 John St.

July 20, 1989  
Ser. # 28572 - 1"

D.W. White Const. relocated service from new main pipe extension to curb stop where it ties into existing service.

Old line shut off at tap and cut at main also abandoned from main to present new curb stop in front of house. Old curb stop & box in street was also abandoned.

Stock by contractor  
22 ft. - 1" copper tubing  
1 - 1" corporation tap  
1 - 1" curb stop  
1 Caldwell stop box

OVER

New Measures:

S x S line Westbrook St.	150.0 ft.
W x E line John S t.	9.5 ft.
S x N line house	13.0 ft.
W x W line house	19.0 ft.
N x S line house	24.0 ft.

Main to curb stop 22.0 ft.

Insp. by J. Rodrigues