

# New Bedford Regulator Specification Sheet

**Regulator #:** R-041B

**Location:** Belleville Ave. and Belleville Rd.

**Date:** 6/25/25

## Structure Measurements

**Structure Type:** Single manhole

**Rim Elevation (ft City Datum):** 11.6

**Regulator Type:** High Level Outlet

**Overflow Height (ft or in):** 31"

**Rim to Top of Weir (ft):** UNK

**Weir Dims (ft or in):** UNK

**Influent pipe  $\varnothing$  (in):** 36

**Rim to Influent Invert (ft):** UNK

**Dry Weather Connection  $\varnothing$  (in):** 36

**Rim to Dry Weather Invert (ft):** UNK

**Overflow pipe  $\varnothing$  (in):** 36

**Rim to Overflow Invert (ft):** EST 19.1

## Sensor Measurements

**Block Present:** Yes

**Level Sensor Status:** Metered

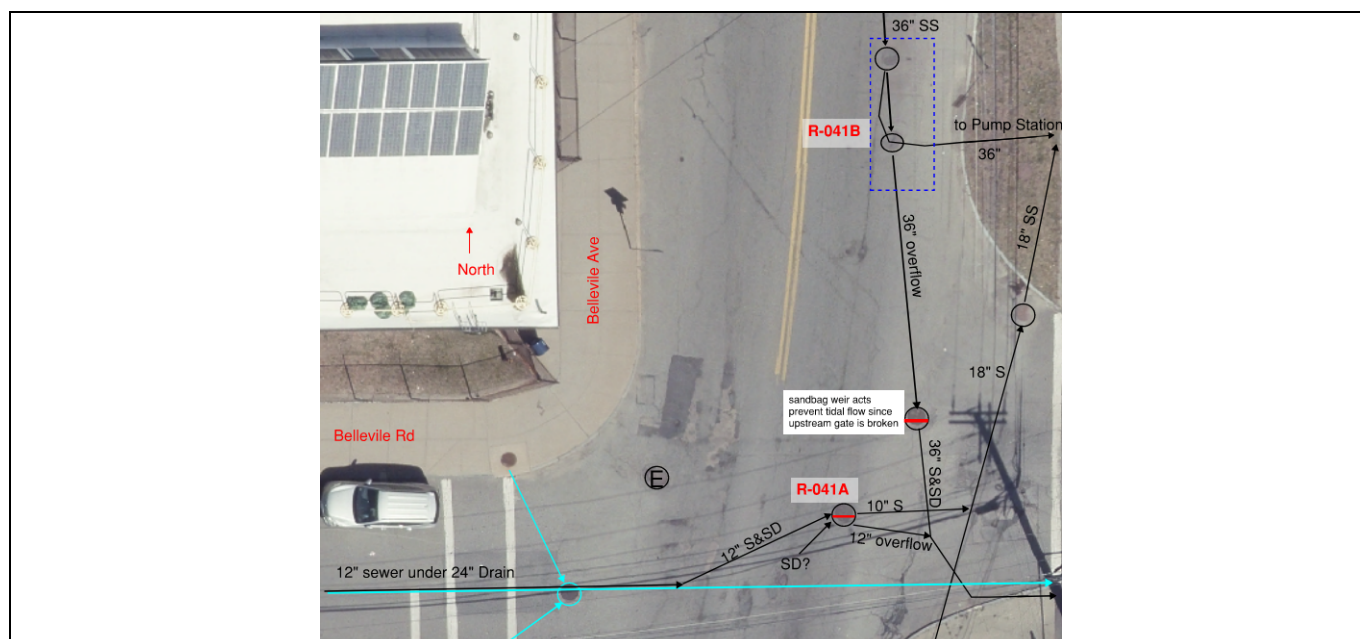
**Sensor Installation Date:** 2/18/2021

**Intra-System Status:** No

**Tide Gate Status:** Downstream weir

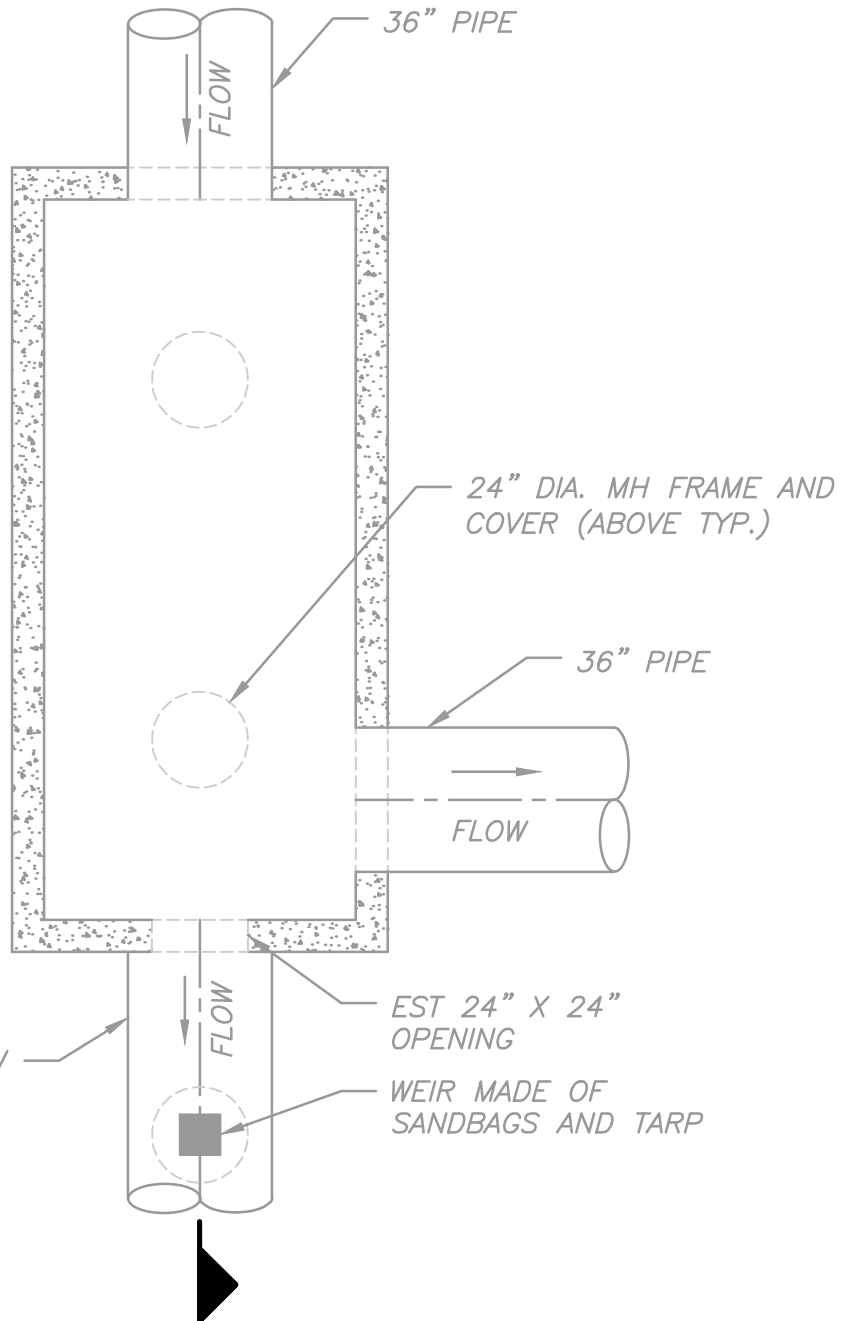
**Notes:** Dry weather flow goes to the pump station. Overflow heads to outfall. Before outfall, there is a temporary weir to prevent tidal backflow.

## Location Sketch:



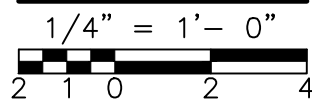


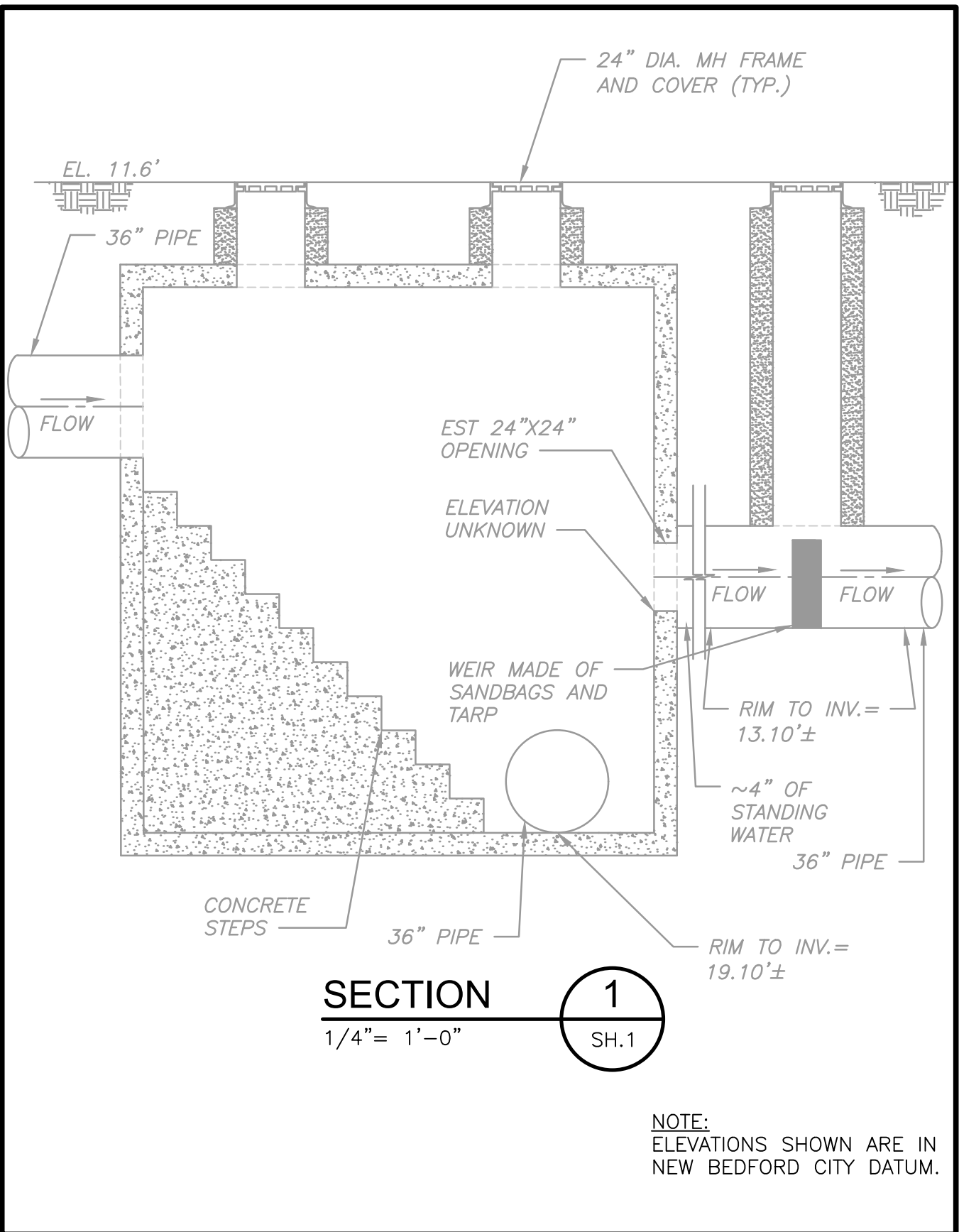
BELLEVILLE  
AVENUE



BELLEVILLE  
ROAD

PLAN

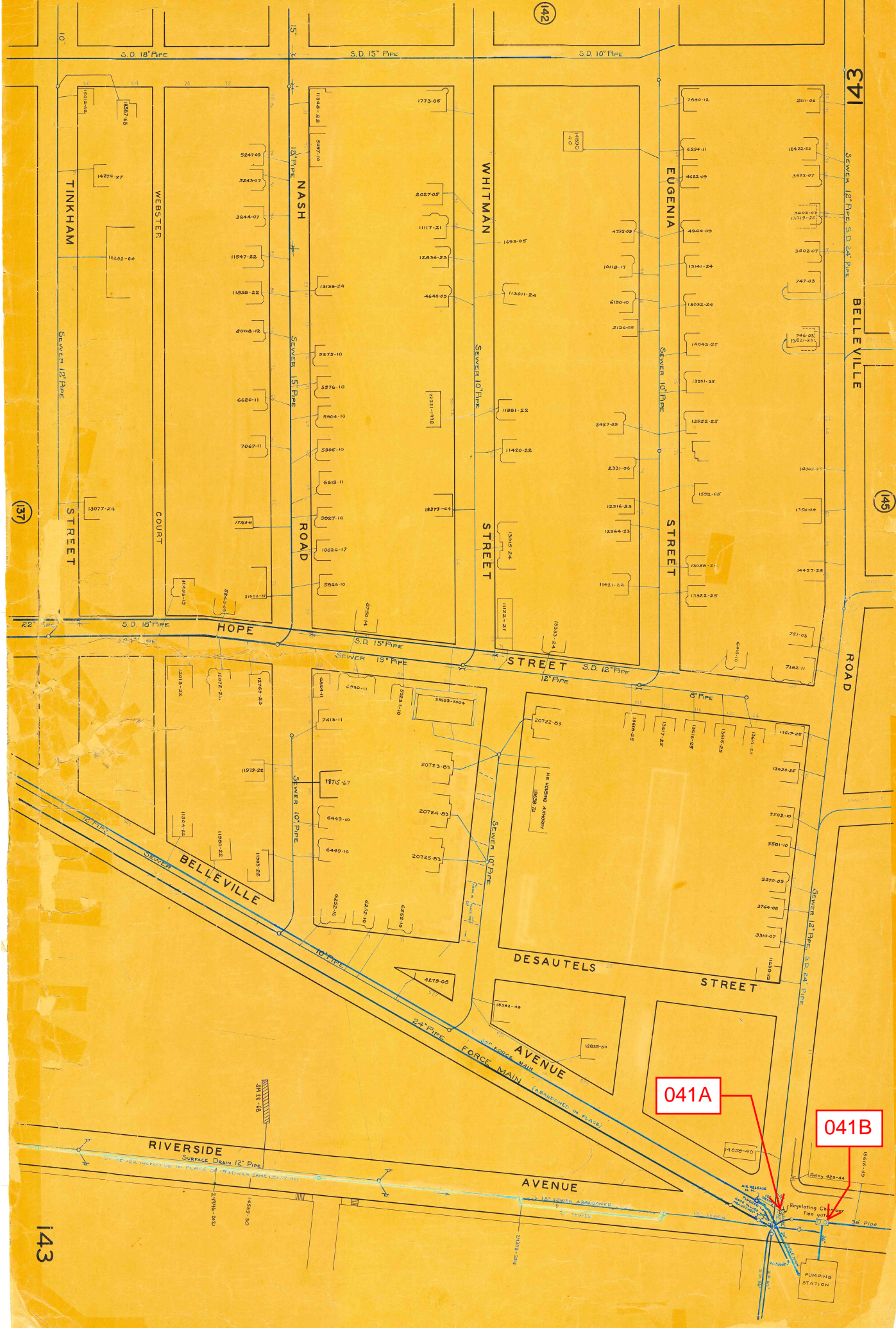






EXISTING  
 COMBINED SEWER  
 EXISTING DRAIN  
 EXISTING GAS  
 UNDERGROUND ELECTRIC  
 UTILITY POLE  
 PROPERTY LINE  
 EXISTING FENCE  
 CATCH BASIN  
 NEW CONTOUR  
 BORING LOCATION  
 DEMONSTRATES NEW WORK  
 FENCE  
 12" WATER  
 ELECTRICAL  
 0  
 10  
 20  
 EXISTING SAND STRIP  
 10' 0" 20' 0" 30' 0" 40' 0" 50' 0" 60' 0" 70' 0" 80' 0" 90' 0" 100' 0" 110' 0" 120' 0" 130' 0" 140' 0" 150' 0" 160' 0" 170' 0" 180' 0" 190' 0" 200' 0" 210' 0" 220' 0" 230' 0" 240' 0" 250' 0" 260' 0" 270' 0" 280' 0" 290' 0" 300' 0" 310' 0" 320' 0" 330' 0" 340' 0" 350' 0" 360' 0" 370' 0" 380' 0" 390' 0" 400' 0" 410' 0" 420' 0" 430' 0" 440' 0" 450' 0" 460' 0" 470' 0" 480' 0" 490' 0" 500' 0" 510' 0" 520' 0" 530' 0" 540' 0" 550' 0" 560' 0" 570' 0" 580' 0" 590' 0" 600' 0" 610' 0" 620' 0" 630' 0" 640' 0" 650' 0" 660' 0" 670' 0" 680' 0" 690' 0" 700' 0" 710' 0" 720' 0" 730' 0" 740' 0" 750' 0" 760' 0" 770' 0" 780' 0" 790' 0" 800' 0" 810' 0" 820' 0" 830' 0" 840' 0" 850' 0" 860' 0" 870' 0" 880' 0" 890' 0" 900' 0" 910' 0" 920' 0" 930' 0" 940' 0" 950' 0" 960' 0" 970' 0" 980' 0" 990' 0" 1000' 0" 1010' 0" 1020' 0" 1030' 0" 1040' 0" 1050' 0" 1060' 0" 1070' 0" 1080' 0" 1090' 0" 1100' 0" 1110' 0" 1120' 0" 1130' 0" 1140' 0" 1150' 0" 1160' 0" 1170' 0" 1180' 0" 1190' 0" 1200' 0" 1210' 0" 1220' 0" 1230' 0" 1240' 0" 1250' 0" 1260' 0" 1270' 0" 1280' 0" 1290' 0" 1300' 0" 1310' 0" 1320' 0" 1330' 0" 1340' 0" 1350' 0" 1360' 0" 1370' 0" 1380' 0" 1390' 0" 1400' 0" 1410' 0" 1420' 0" 1430' 0" 1440' 0" 1450' 0" 1460' 0" 1470' 0" 1480' 0" 1490' 0" 1500' 0" 1510' 0" 1520' 0" 1530' 0" 1540' 0" 1550' 0" 1560' 0" 1570' 0" 1580' 0" 1590' 0" 1600' 0" 1610' 0" 1620' 0" 1630' 0" 1640' 0" 1650' 0" 1660' 0" 1670' 0" 1680' 0" 1690' 0" 1700' 0" 1710' 0" 1720' 0" 1730' 0" 1740' 0" 1750' 0" 1760' 0" 1770' 0" 1780' 0" 1790' 0" 1800' 0" 1810' 0" 1820' 0" 1830' 0" 1840' 0" 1850' 0" 1860' 0" 1870' 0" 1880' 0" 1890' 0" 1900' 0" 1910' 0" 1920' 0" 1930' 0" 1940' 0" 1950' 0" 1960' 0" 1970' 0" 1980' 0" 1990' 0" 2000' 0" 2010' 0" 2020' 0" 2030' 0" 2040' 0" 2050' 0" 2060' 0" 2070' 0" 2080' 0" 2090' 0" 2100' 0" 2110' 0" 2120' 0" 2130' 0" 2140' 0" 2150' 0" 2160' 0" 2170' 0" 2180' 0" 2190' 0" 2200' 0" 2210' 0" 2220' 0" 2230' 0" 2240' 0" 2250' 0" 2260' 0" 2270' 0" 2280' 0" 2290' 0" 2300' 0" 2310' 0" 2320' 0" 2330' 0" 2340' 0" 2350' 0" 2360' 0" 2370' 0" 2380' 0" 2390' 0" 2400' 0" 2410' 0" 2420' 0" 2430' 0" 2440' 0" 2450' 0" 2460' 0" 2470' 0" 2480' 0" 2490' 0" 2500' 0" 2510' 0" 2520' 0" 2530' 0" 2540' 0" 2550' 0" 2560' 0" 2570' 0" 2580' 0" 2590' 0" 2600' 0" 2610' 0" 2620' 0" 2630' 0" 2640' 0" 2650' 0" 2660' 0" 2670' 0" 2680' 0" 2690' 0" 2700' 0" 2710' 0" 2720' 0" 2730' 0" 2740' 0" 2750' 0" 2760' 0" 2770' 0" 2780' 0" 2790' 0" 2800' 0" 2810' 0" 2820' 0" 2830' 0" 2840' 0" 2850' 0" 2860' 0" 2870' 0" 2880' 0" 2890' 0" 2900' 0" 2910' 0" 2920' 0" 2930' 0" 2940' 0" 2950' 0" 2960' 0" 2970' 0" 2980' 0" 2990' 0" 3000' 0" 3010' 0" 3020' 0" 3030' 0" 3040' 0" 3050' 0" 3060' 0" 3070' 0" 3080' 0" 3090' 0" 3100' 0" 3110' 0" 3120' 0" 3130' 0" 3140' 0" 3150' 0" 3160' 0" 3170' 0" 3180' 0" 3190' 0" 3200' 0" 3210' 0" 3220' 0" 3230' 0" 3240' 0" 3250' 0" 3260' 0" 3270' 0" 3280' 0" 3290' 0" 3300' 0" 3310' 0" 3320' 0" 3330' 0" 3340' 0" 3350' 0" 3360' 0" 3370' 0" 3380' 0" 3390' 0" 3400' 0" 3410' 0" 3420' 0" 3430' 0" 3440' 0" 3450' 0" 3460' 0" 3470' 0" 3480' 0" 3490' 0" 3500' 0" 3510' 0" 3520' 0" 3530' 0" 3540' 0" 3550' 0" 3560' 0" 3570' 0" 3580' 0" 3590' 0" 3600' 0" 3610' 0" 3620' 0" 3630' 0" 3640' 0" 3650' 0" 3660' 0" 3670' 0" 3680' 0" 3690' 0" 3700' 0" 3710' 0" 3720' 0" 3730' 0" 3740' 0" 3750' 0" 3760' 0" 3770' 0" 3780' 0" 3790' 0" 3800' 0" 3810' 0" 3820' 0" 3830' 0" 3840' 0" 3850' 0" 3860' 0" 3870' 0" 3880' 0" 3890' 0" 3900' 0" 3910' 0" 3920' 0" 3930' 0" 3940' 0" 3950' 0" 3960' 0" 3970' 0" 3980' 0" 3990' 0" 4000' 0" 4010' 0" 4020' 0" 4030' 0" 4040' 0" 4050' 0" 4060' 0" 4070' 0" 4080' 0" 4090' 0" 4100' 0" 4110' 0" 4120' 0" 4130' 0" 4140' 0" 4150' 0" 4160' 0" 4170' 0" 4180' 0" 4190' 0" 4200' 0" 4210' 0" 4220' 0" 4230' 0" 4240' 0" 4250' 0" 4260' 0" 4270' 0" 4280' 0" 4290' 0" 4300' 0" 4310' 0" 4320' 0" 4330' 0" 4340' 0" 4350' 0" 4360' 0" 4370' 0" 4380' 0" 4390' 0" 4400' 0" 4410' 0" 4420' 0" 4430' 0" 4440' 0" 4450' 0" 4460' 0"





041A

041B



## REGULATOR FIELD PHOTOS

**Figure 1**



**Figure 2**



**Figure 3**



**Figure 4**



### Descriptions:

**Figure 1:** Inside of R-041B. Dry weather flow and high level outlet visible.

**Figure 2:** Inside of R-041B. Inflow and high level outlet opening visible. Tide gate missing.

**Figure 3:** Temporary sandbag weir downstream of R-041B.

**Figure 4:** Google Earth snapshot facing south down Belleville Ave. Manhole marked in red.