

New Bedford Regulator Specification Sheet

Regulator #: R-041A

Location: Belleville Ave. and Belleville Rd.

Date: 6/25/25

Structure Measurements

Structure Type: Single manhole

Rim Elevation (ft City Datum): 11.8

Regulator Type: Sandbag and Tarp Weir

Overflow Height (ft or in): Unknown

Rim to Top of Weir (ft): 6.9

Weir Dims (ft or in): Length: 4', Width: 1', Height: ~22"

Influent pipe ø (in): 12, 12(SD?), 4

Rim to Influent Invert (ft): UNK, UNK, 5.1

Dry Weather Connection ø (in): 10

Rim to Dry Weather Invert (ft): UNK

Overflow pipe ø (in): 12

Rim to Overflow Invert (ft): UNK

Sensor Measurements

Block Present: Yes

Level Sensor Status: Metered

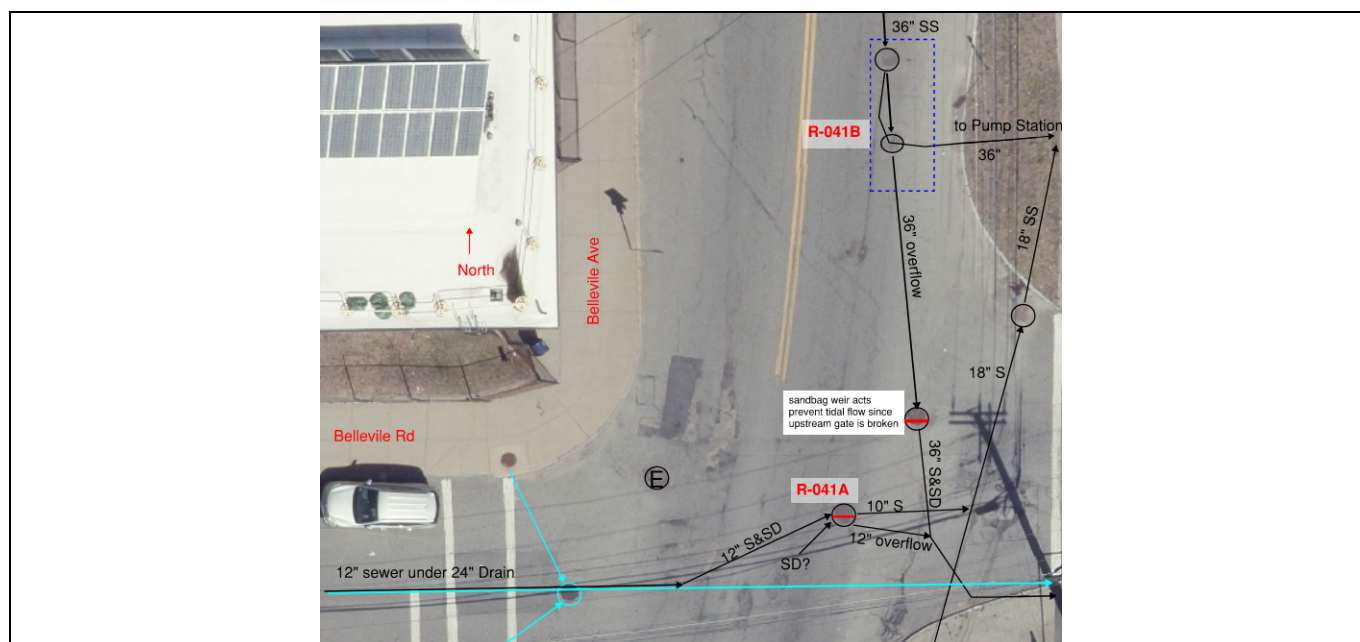
Sensor Installation Date: 2/18/2021

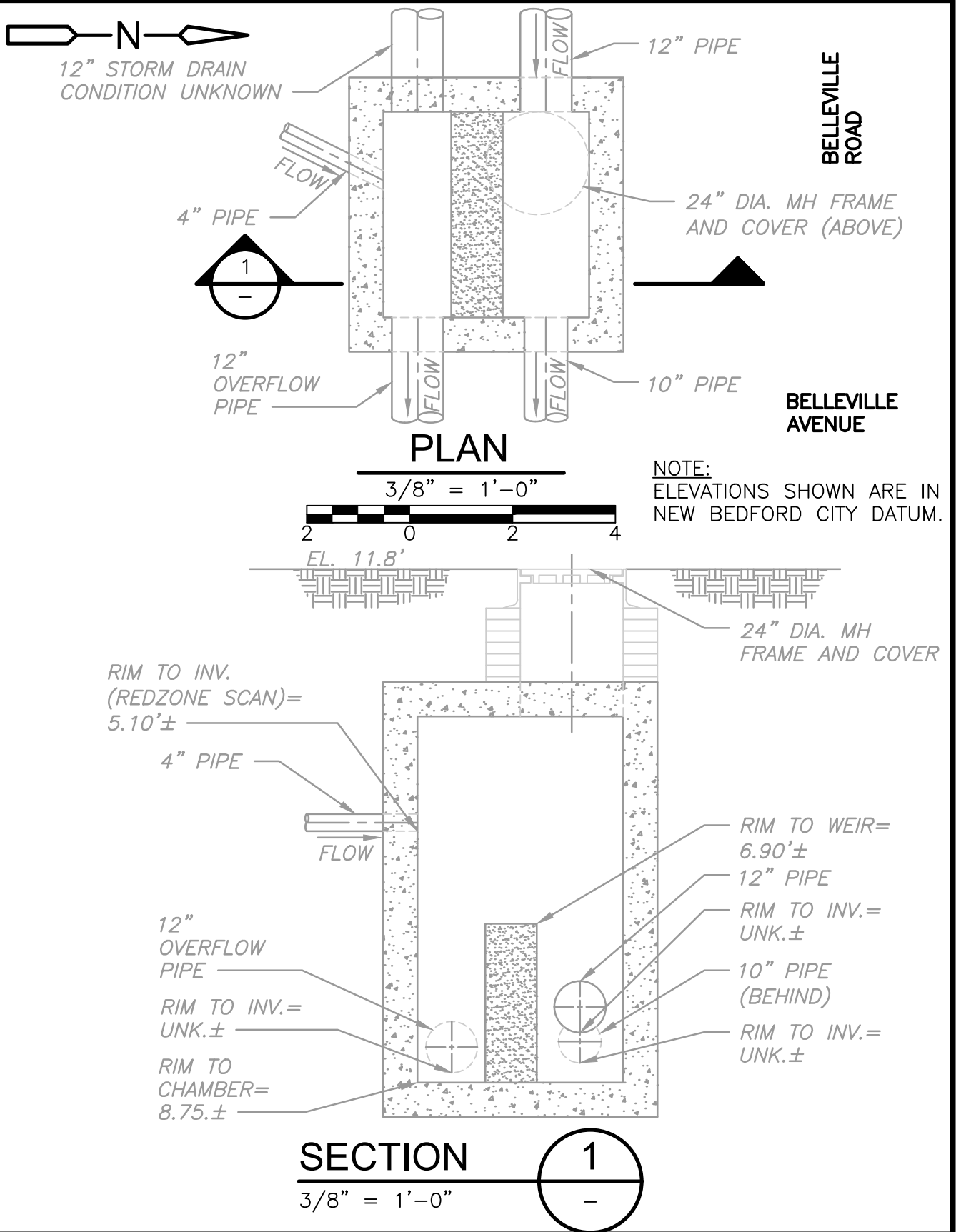
Intra-System Status: No

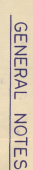
Tide Gate Status: None

Notes: Standing water observed in manhole during 2023 Redzone scan, see Figure 1.

Location Sketch:





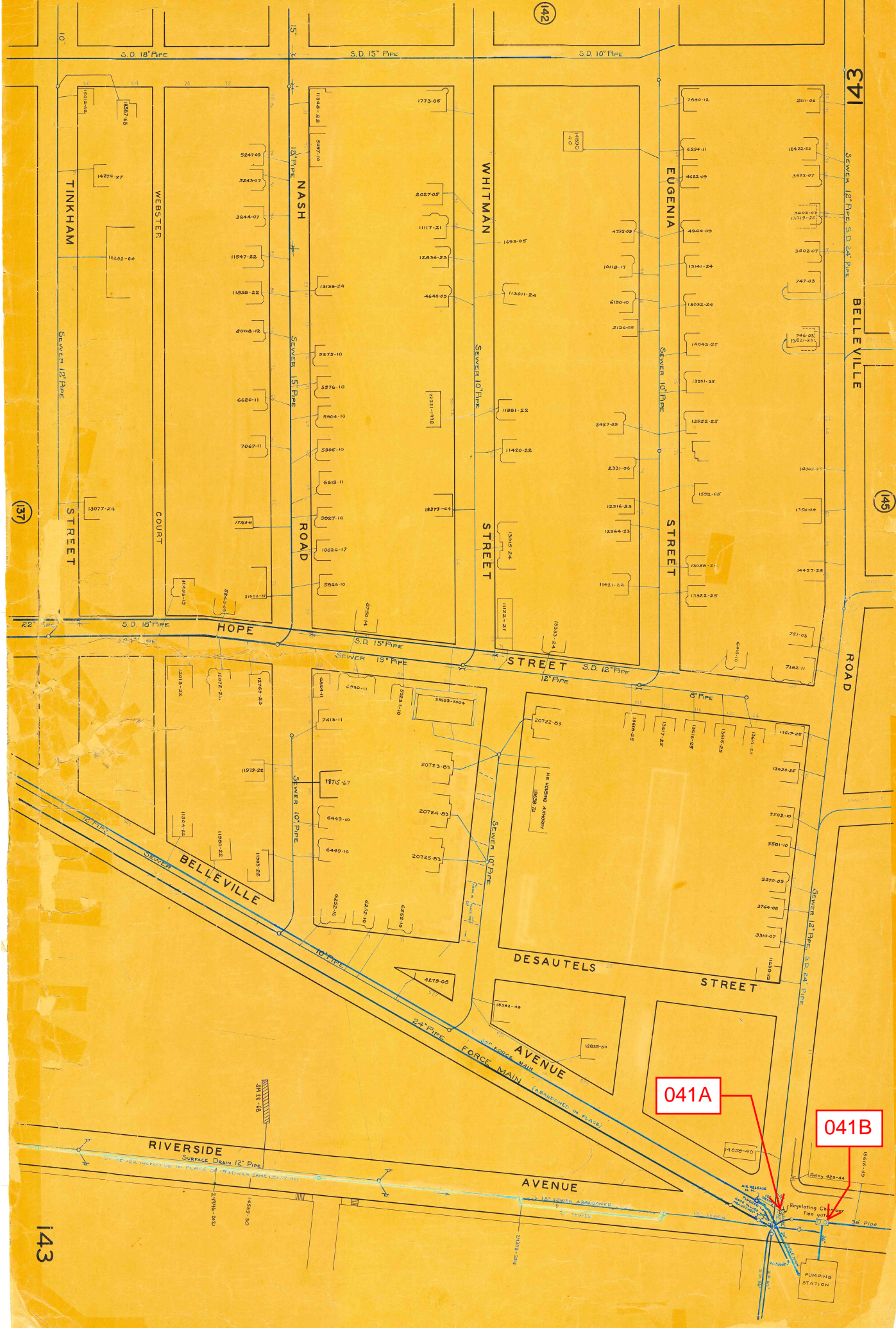


SITE PLAN

SITE PLAN

SHEET NO.





041A

041B

REGULATOR FIELD PHOTOS

Figure 1



Figure 2



Figure 3



Descriptions:

Figure 1: Inside of R-041A. Inflow, weir, overflow chamber visible.

Figure 2: Inside of R-041A. Inflow, weir, overflow chamber visible.

Figure 3: Google Earth snapshot facing Belleville Pump Station. Manhole marked in red.