

New Bedford Regulator Specification Sheet

Regulator #: R-040A

Location: Coggeshall St. near Belleville Ave.

Date: 6/25/25

Structure Measurements

Structure Type: Single manhole

Rim Elevation (ft City Datum): 7.1

Regulator Type: Stop Plank Weir

Overflow Height (ft or in): 11.6'

Rim to Top of Weir (ft): 4.9

Weir Dims (ft or in): Stop plank Length: 50", Stop plank Width: 3", Height: 11.6' above Dry weather outlet

Influent pipe ø (in): 15, 24, 18 (abandoned)

Rim to Influent Invert (ft): 16.1, 16.2, 8.5

Dry Weather Connection ø (in): 21 (to Pump Station)

Rim to Dry Weather Invert (ft): 16.5

Overflow pipe ø (in): 20 (to 24 sewer)

Rim to Overflow Invert (ft): 4.4 (20" opening to 24" sewer)

Sensor Measurements

Block Present: Yes

Level Sensor Status: Not Metered

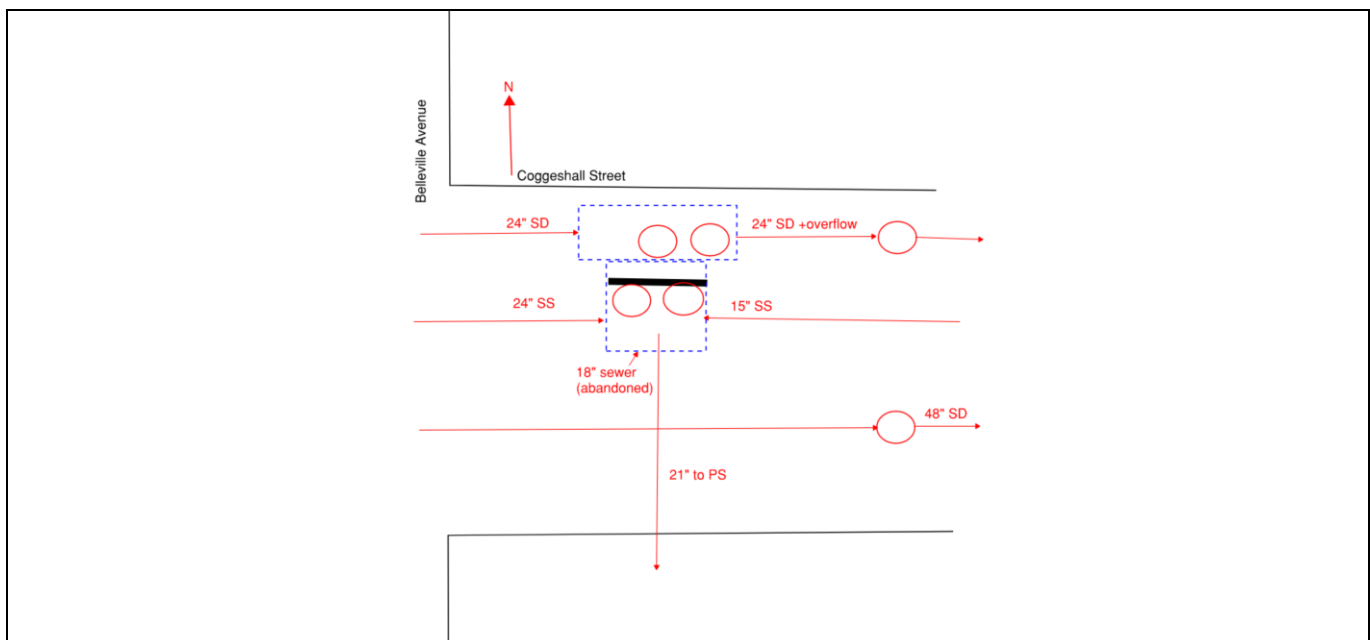
Sensor Installation Date: n/a

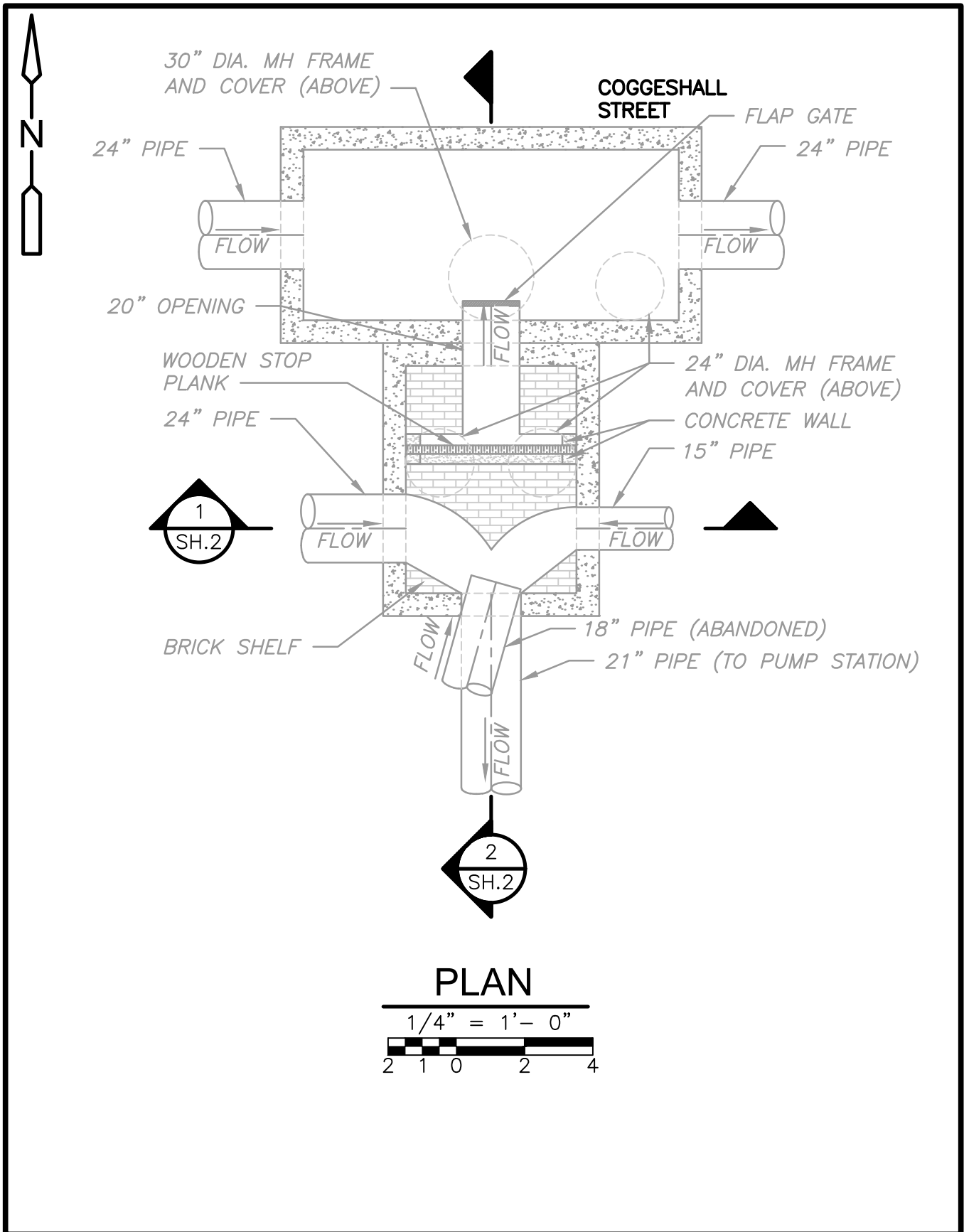
Intra-System Status: No

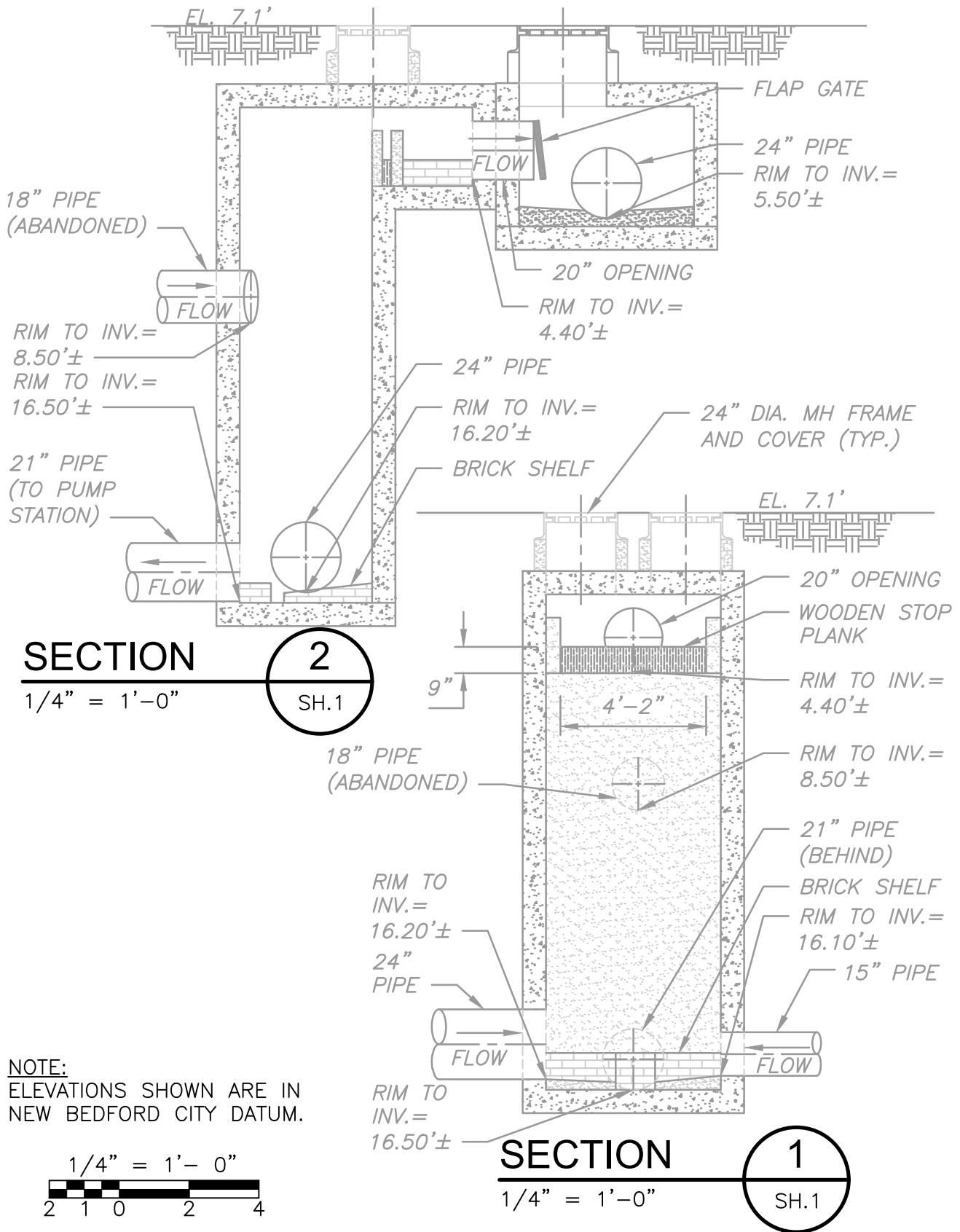
Tide Gate Status: Flap gate in Overflow Chamber

Notes: B-548A Additions to Int. sewer system (sheet 31)

Location Sketch:







118A

BETTER

(128)

(118)

EDGAR GROVE ST.

10" Storm Drain (STREET UNDER)

BELLEVILLE

AVENUE

10 PIPE

040A

MITCHELL

STREET

COGESHALL

STREET

COGESHALL ST.

(117-A)

MATCH LINE

118A

ROUTT

13



REGULATOR FIELD PHOTOS

Figure 1



Figure 2



Figure 3



Figure 4



Descriptions:

Figure 1: Inside of R-040A from the top of the manhole. Weir, inlets, and outlets visible.

Figure 2: Inside of R-040A. Weir, inlets, and outlets visible.

Figure 3: Location of the chamber facing east on Coggeshall Street.

Figure 4: Aerial location with arrow pointing to corresponding manhole.