

New Bedford Regulator Specification Sheet

Regulator #: R-037A

Location: Purchase St. near Pope St.

Date: 6/25/25

Structure Measurements

Structure Type: Single manhole

Rim Elevation (ft City Datum): 28.9

Regulator Type: Fixed Weir

Overflow Height (ft or in): 12"

Rim to Top of Weir (ft): 10.2

Weir Dims (ft or in): Length: 2', Width: 4", Height: 12"

above Dry weather outlet

Influent pipe ø (in): 15

Rim to Influent Invert (ft): 11.1

Dry Weather Connection ø (in): 15

Rim to Dry Weather Invert (ft): 11.4

Overflow pipe ø (in): 15

Rim to Overflow Invert (ft): 11.4

Sensor Measurements

Block Present: No

Level Sensor Status: Not Metered

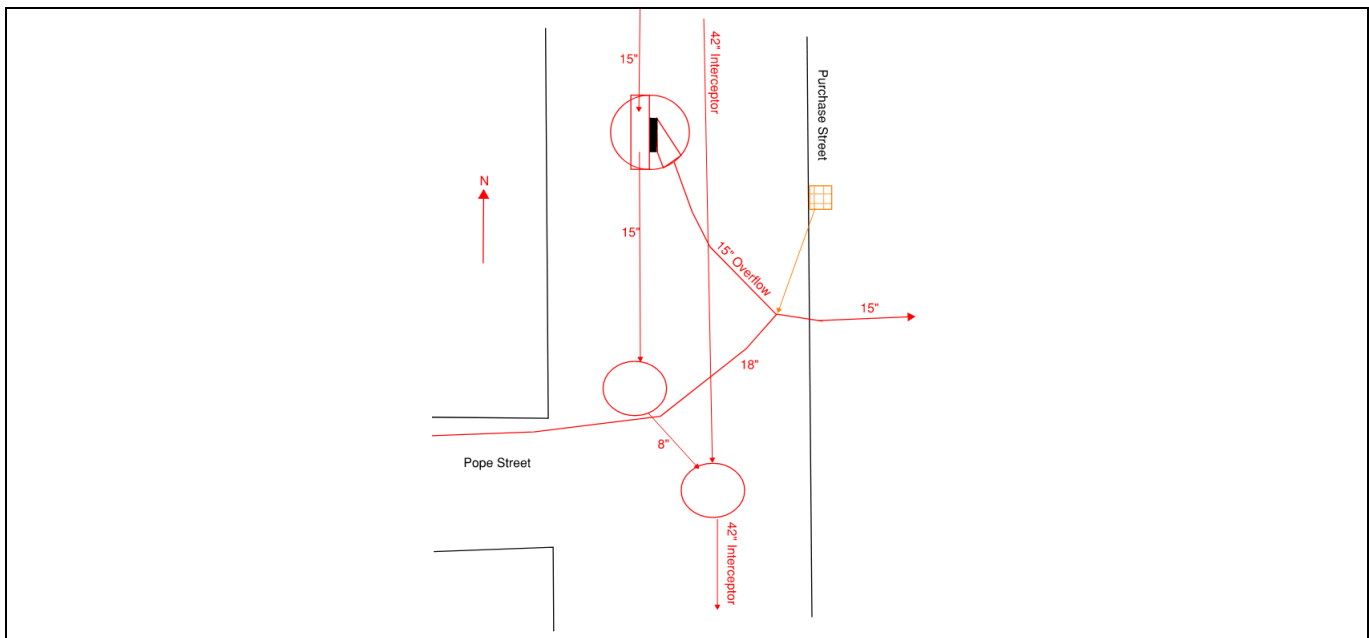
Sensor Installation Date: n/a

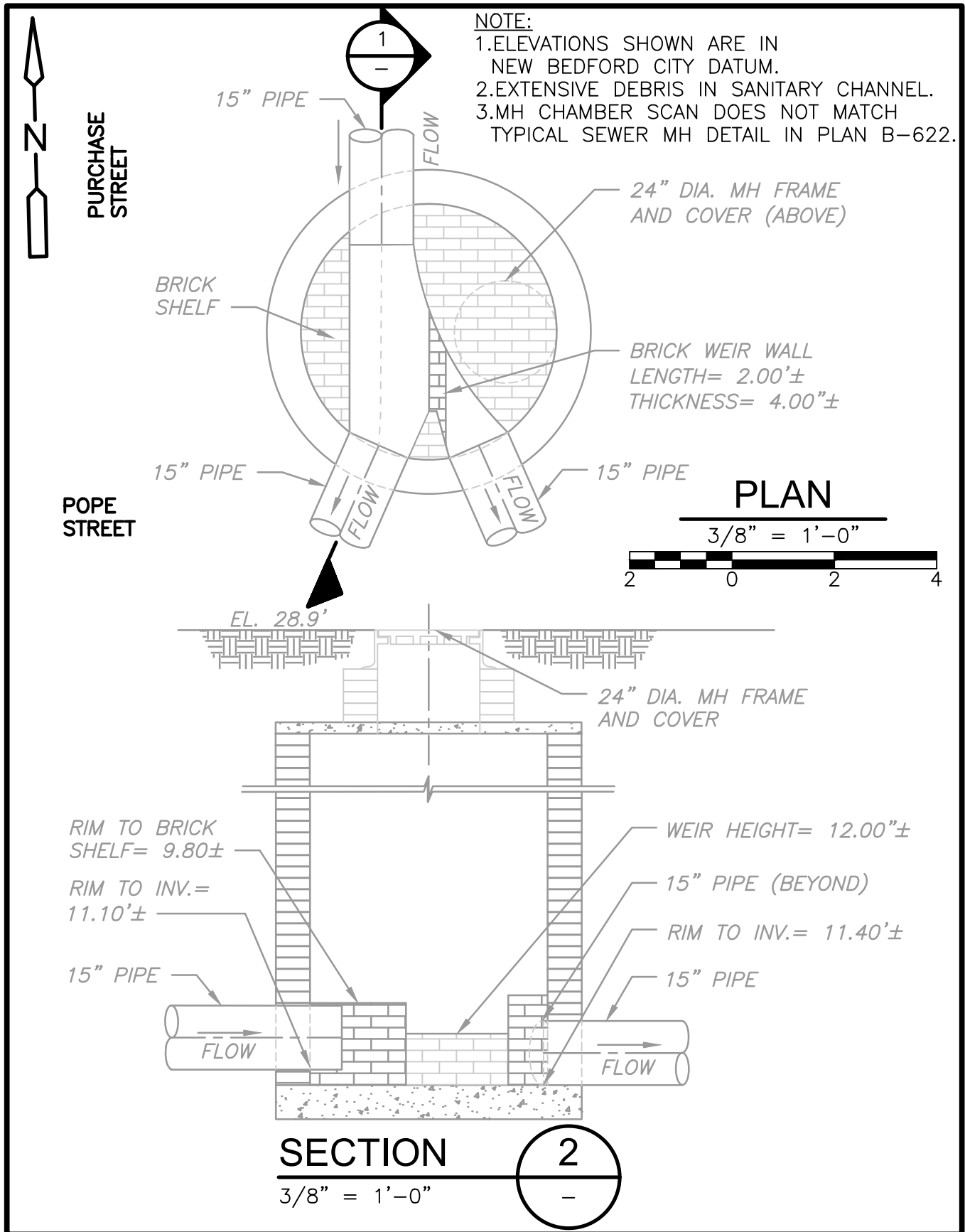
Intra-System Status: No

Tide Gate Status: None

Notes:

Location Sketch:







REGULATOR FIELD PHOTOS

Figure 1

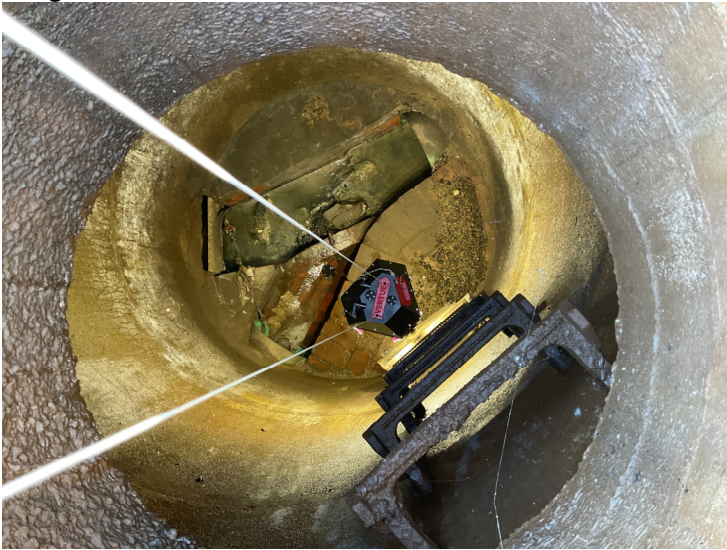


Figure 2



Figure 3



Figure 4



Descriptions:

Figure 1: Inside of R-037A. Shows Inflow, outflow, overflow, and weir.

Figure 2: Location of the manhole looking south down Purchase Street.

Figure 3: Location of the manhole looking across Purchase Street.

Figure 4: Aerial location with arrow pointing to corresponding manhole.