

New Bedford Regulator Specification Sheet

Regulator #: R-036B

Location: Pearl St. and Purchase St.

Date: 6/25/25

Structure Measurements

Structure Type: Single manhole

Rim Elevation (ft City Datum): 29.0

Regulator Type: High Level Outlet

Overflow Height (ft or in): 4"

Rim to Top of Weir (ft): 8.1

Weir Dims (ft or in): 15" pipe 4" above inlet elevation

Influent pipe \varnothing (in): 10

Rim to Influent Invert (ft): 8.33

Dry Weather Connection \varnothing (in): 8

Rim to Dry Weather Invert (ft): 8.4

Overflow pipe \varnothing (in): 15

Rim to Overflow Invert (ft): 8.1

Sensor Measurements

Block Present: No

Level Sensor Status: Not Metered

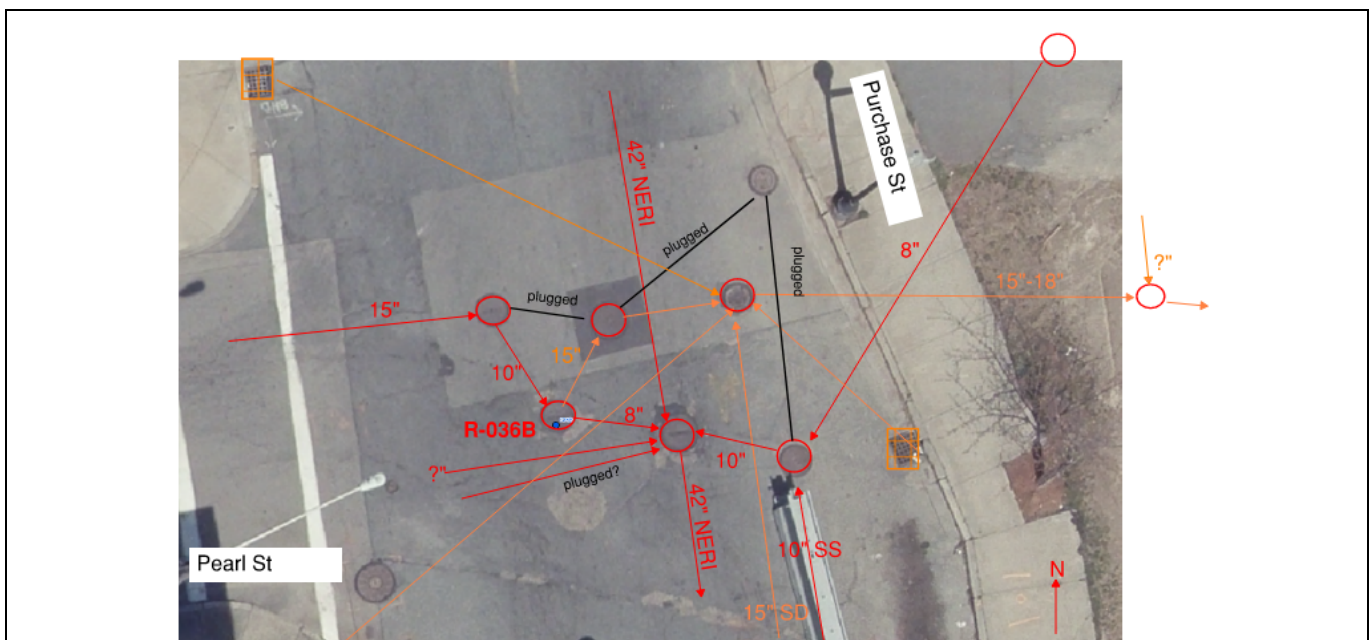
Sensor Installation Date: n/a

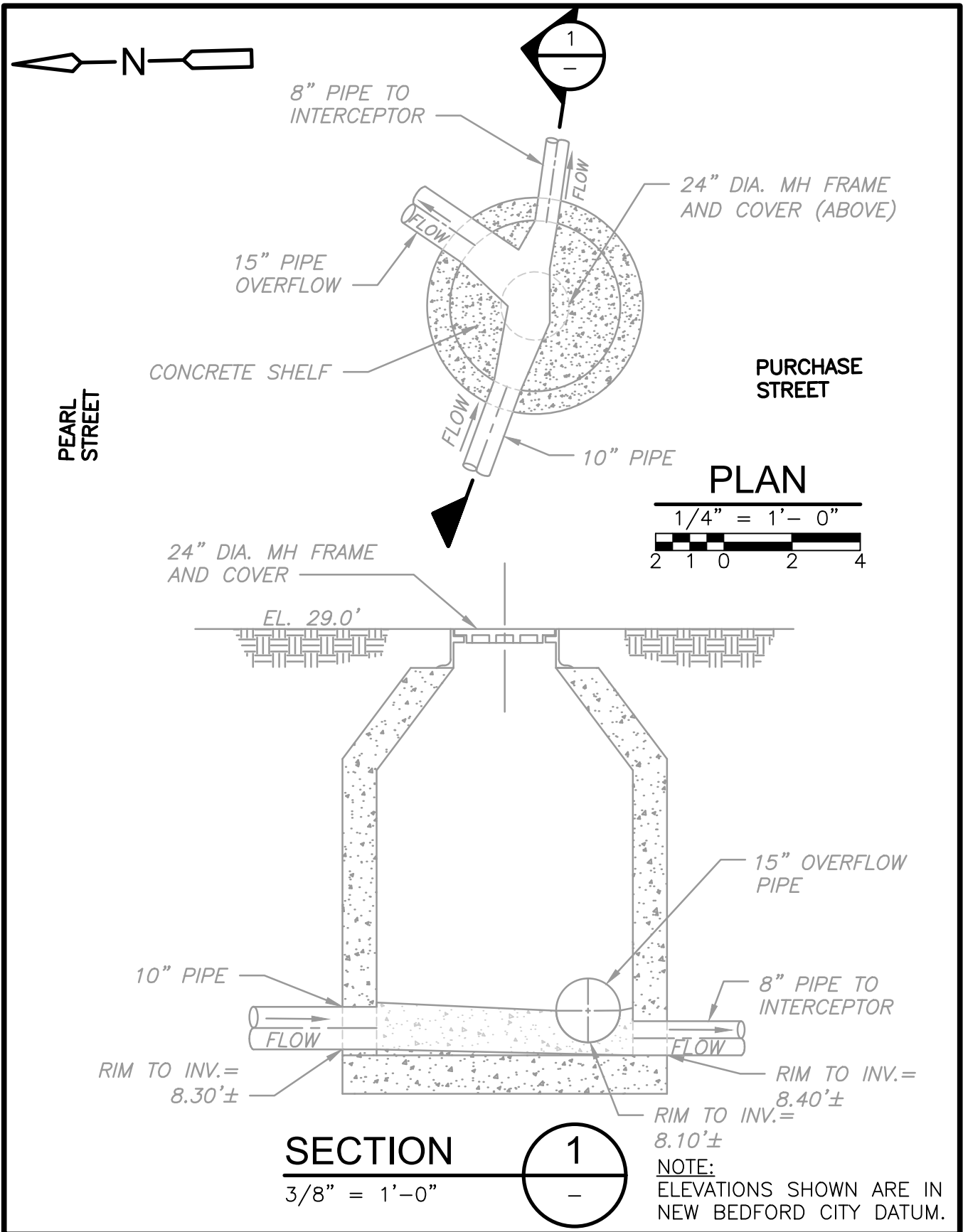
Intra-System Status: No

Tide Gate Status: None

Notes: MH-4001 is the correct location. MH-8301 is the old regulator. See Record Drawing B-622 (sheet 14)

Location Sketch:

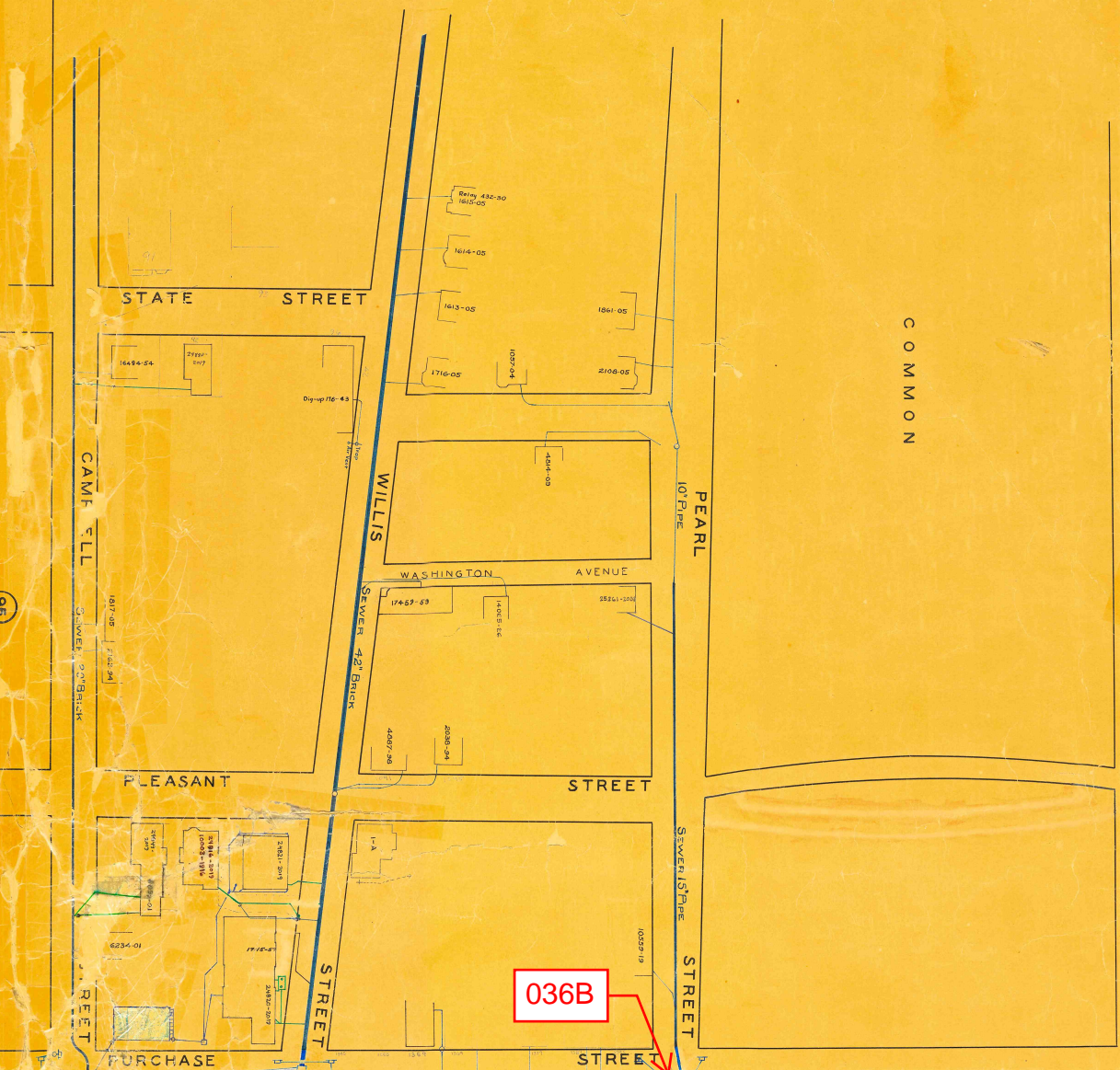




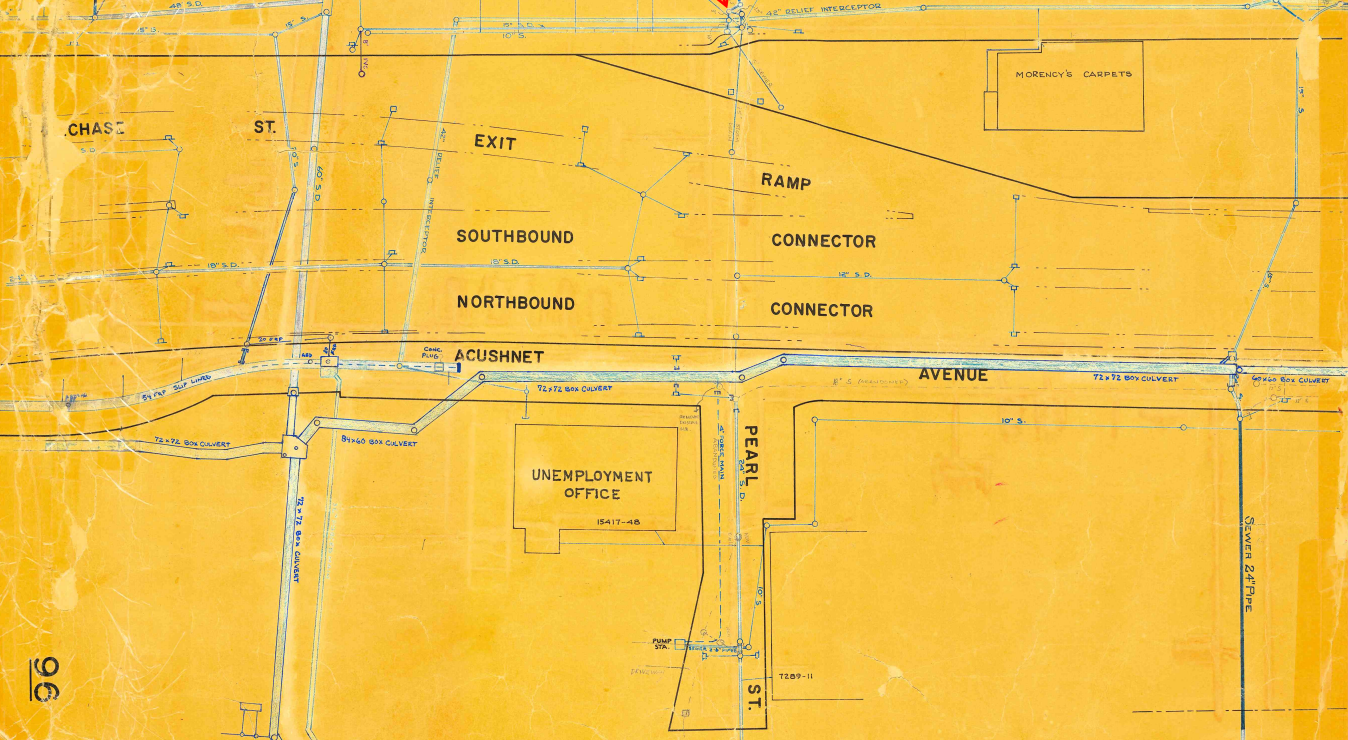


105

97



95



95-A

REGULATOR FIELD PHOTOS

Figure 1



Figure 2

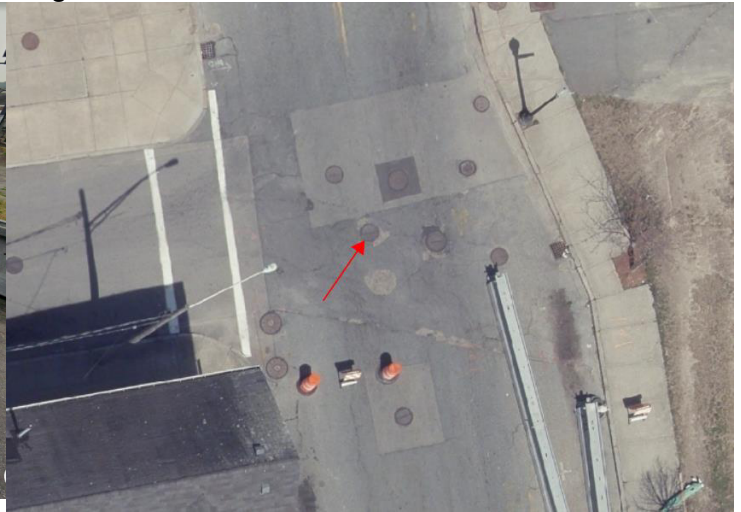


Figure 3



Descriptions:

Figure 1: Google Earth snapshot facing north on Purchase St. Manhole marked in red.

Figure 2: Aerial location with arrow pointing to corresponding manhole.

Figure 3: Looking down into the manhole of R-036B.