

New Bedford Regulator Specification Sheet

Regulator #: R-036A

Location: Willis St. and Purchase St.

Date: 6/25/25

Structure Measurements

Structure Type: Single manhole

Rim Elevation (ft City Datum): 34.7

Regulator Type: Fixed Weir

Overflow Height (ft or in): 1.5'

Rim to Top of Weir (ft): 8.2

Weir Dims (ft or in): Length: 5.2', Width: 9", Height: 1.5' above Dry weather outlet

Influent pipe ø (in): 36, 36

Rim to Influent Invert (ft): 8.2, 7.7

Dry Weather Connection ø (in): 15

Rim to Dry Weather Invert (ft): 11.10

Overflow pipe ø (in): 52

Rim to Overflow Invert (ft): 17.2

Sensor Measurements

Block Present: Yes

Level Sensor Status: Metered

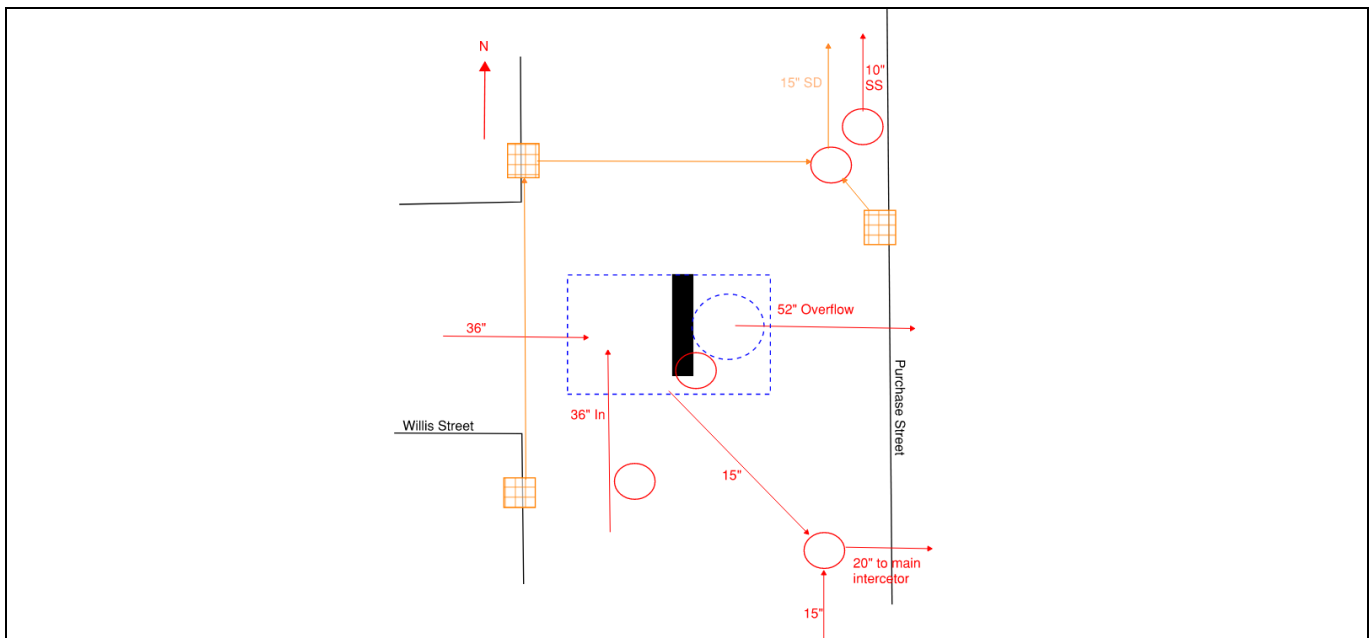
Sensor Installation Date: 7/26/2022

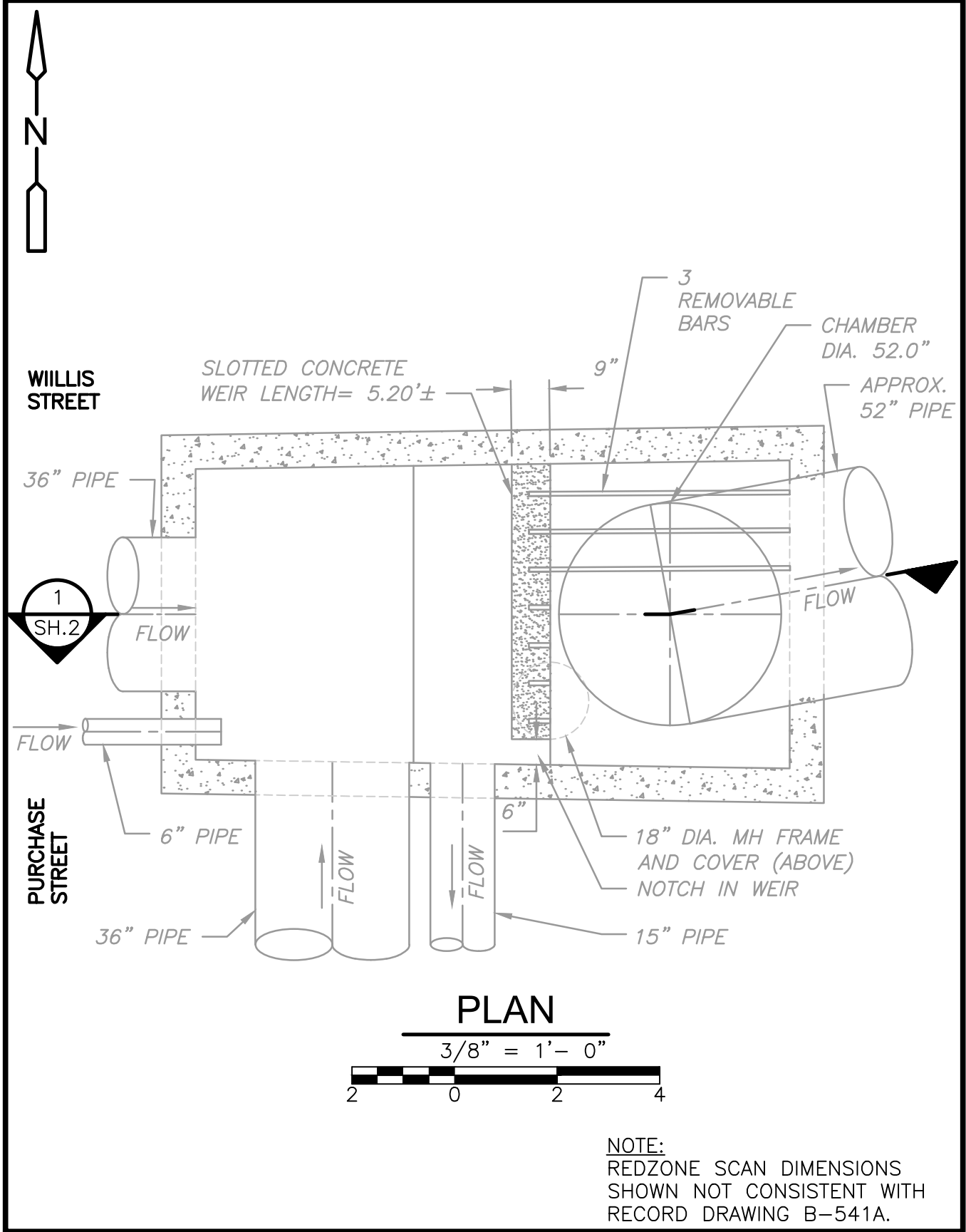
Intra-System Status: No

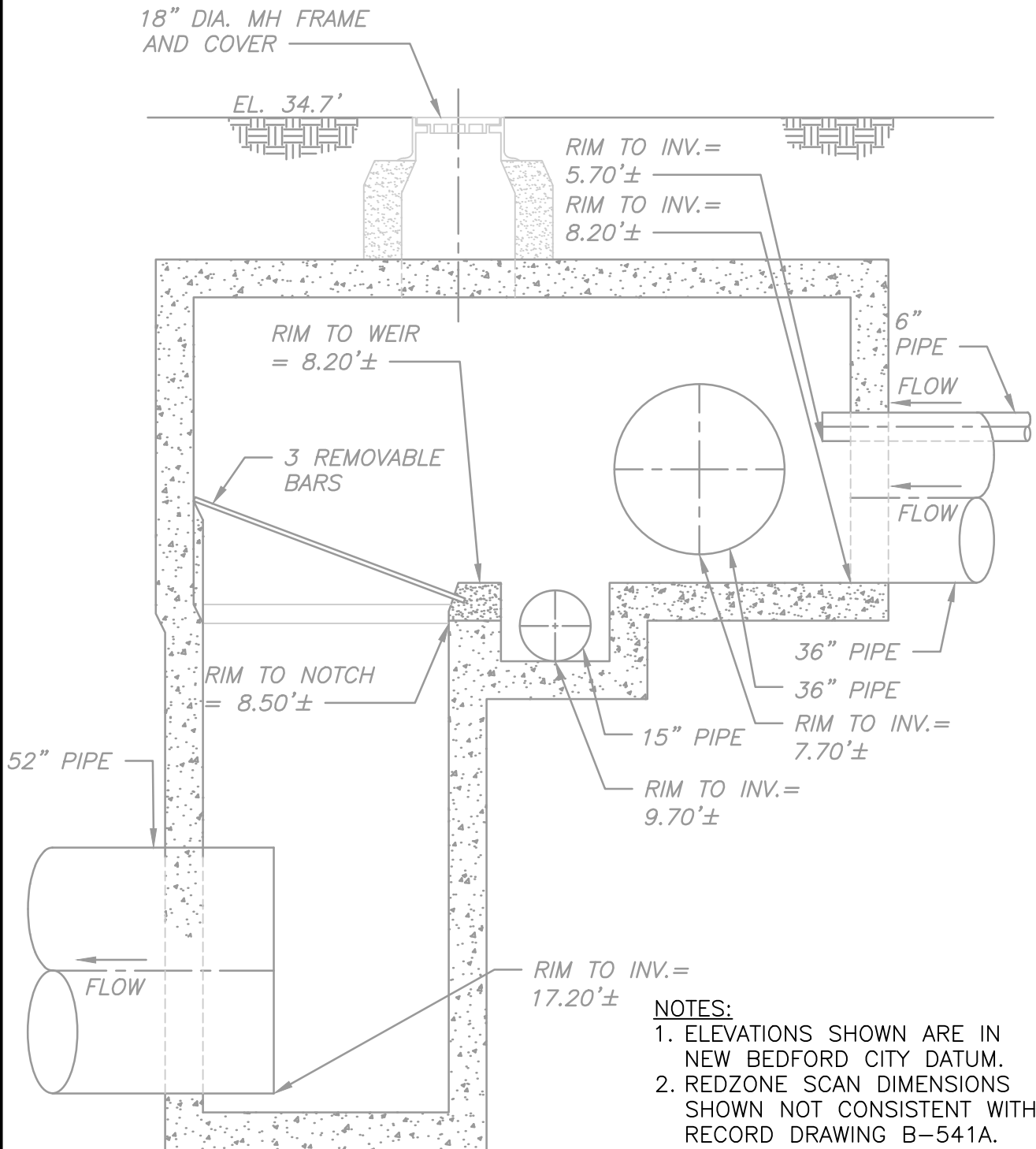
Tide Gate Status: None

Notes: Notch in weir, see Figure 1

Location Sketch:





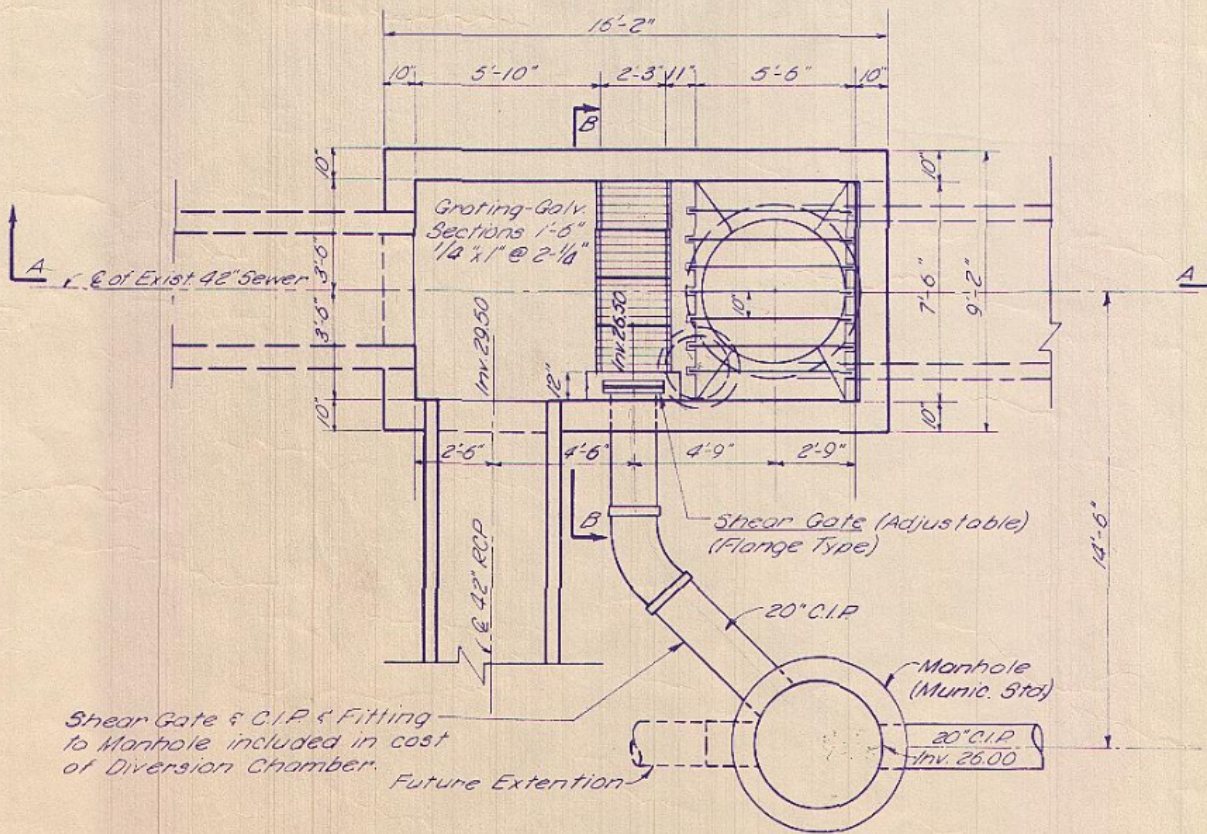


SECTION

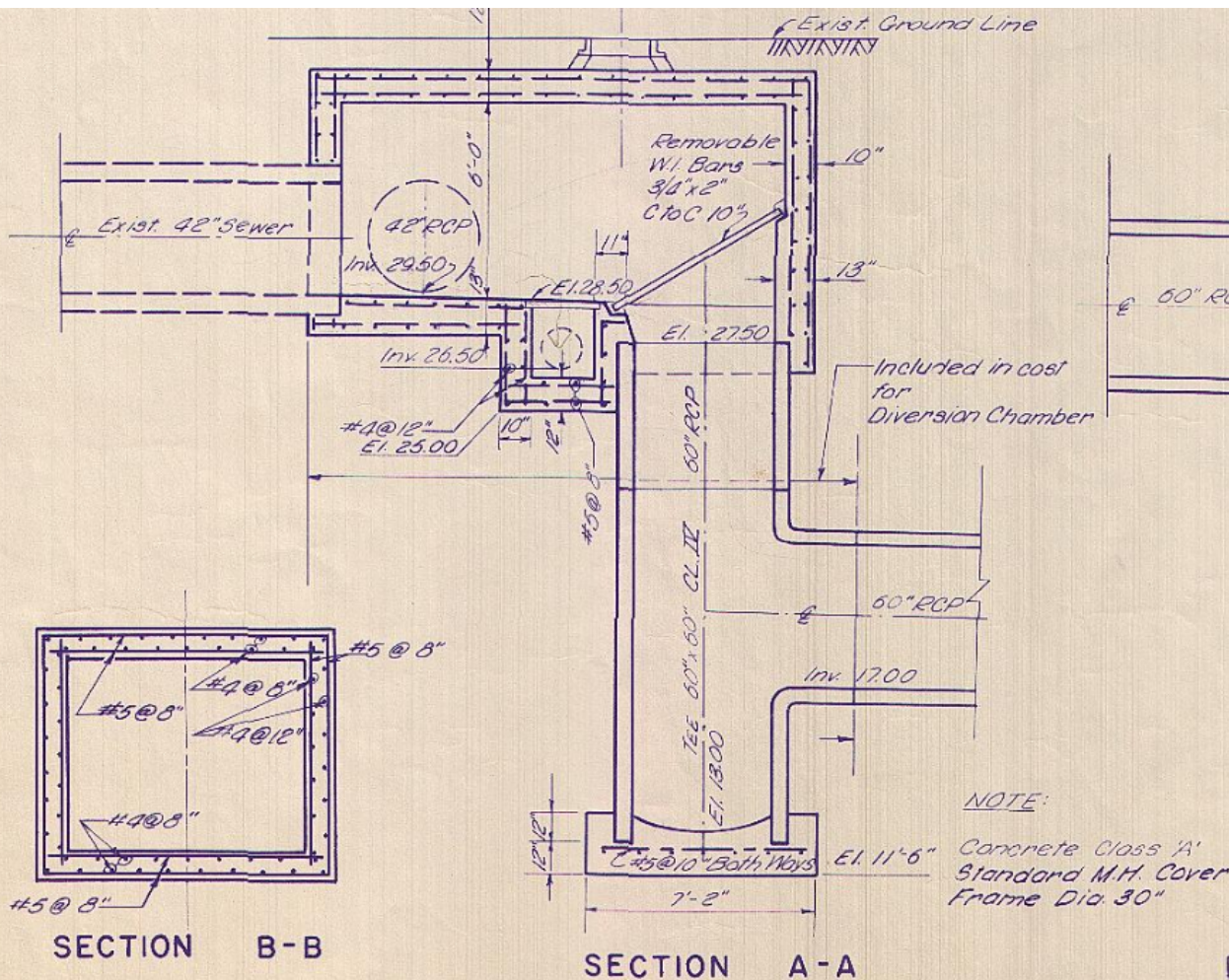
3/8" = 1'-0"

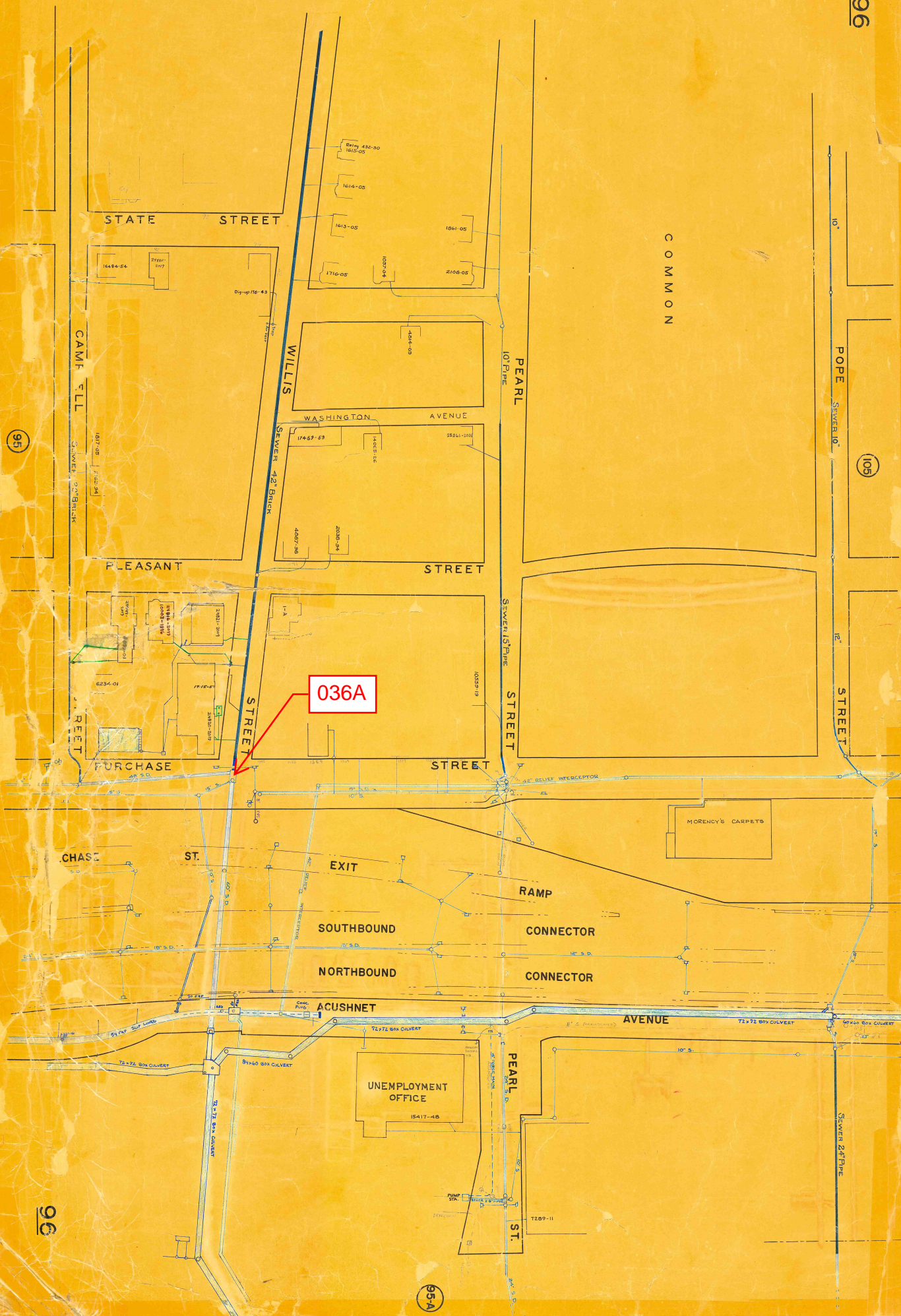
1

SH.1



PLAN OF DIVERSION CHAMBER





REGULATOR FIELD PHOTOS

Figure 1



Figure 2



Figure 3



Figure 4



Descriptions:

Figure 1: Inside of R-036A. Outflow, slotted weir, and overflow visible.

Figure 2: Inside of R-036A. Entire chamber visible.

Figure 3: Location of manhole. Looking down Purchase Street at Willis Street intersection.

Figure 4: Aerial location with arrow pointing to corresponding manhole.